

FEDERAL ENERGY REGULATORY COMMISSION

Washington, DC 20426

April 15, 2013

OFFICE OF ENERGY PROJECTS

Project No. 1892-026 – New Hampshire / Vermont
Project No. 1855-045 – New Hampshire / Vermont
Project No. 1904-073 – New Hampshire / Vermont
TransCanada Hydro Northeast Inc.

Project No. 2485-063 – Massachusetts
Project No. 1889-081 – Massachusetts
FirstLight Hydro Generating Company

Subject: Scoping Document 2 for the Wilder (FERC No. 1892-026), Bellows Falls (FERC No. 1855-045), Vernon (FERC No. 1904-073), and Turners Falls (FERC No. 1889-081) hydroelectric projects, and the Northfield Mountain Pumped Storage Project (FERC No. 2485-063)

To the Parties Addressed:

The Federal Energy Regulatory Commission (Commission) is conducting National Environmental Policy Act (NEPA) scoping for the relicensing of three existing hydroelectric projects owned and operated by TransCanada Hydro Northeast Inc. (TransCanada) - the Wilder (FERC No. 1892), Bellows Falls (FERC No. 1855), and Vernon (FERC No. 1904) hydroelectric projects, and two existing hydroelectric projects owned and operated by FirstLight Hydro Generating Company (FirstLight) - the Turners Falls (FERC No. 1889) hydroelectric project and the Northfield Mountain Pumped Storage Project (FERC No. 2485) (collectively referred to as the Connecticut River projects). TransCanada and FirstLight filed their Pre-Application Documents (PAD) on October 31, 2012.

TransCanada's Wilder Project is located on the Connecticut River in Orange and Windsor counties, Vermont and Grafton County, New Hampshire. The Bellows Falls Project is located on the Connecticut River in Windham County, Vermont and Cheshire County, New Hampshire. The Vernon Project is located on the Connecticut River in Windsor and Windham counties, Vermont and Sullivan and Cheshire counties, New Hampshire.

FirstLight's Turners Falls Project and Northfield Mountain Pumped Storage Project are located on the Connecticut River in Franklin County, Massachusetts, Windham County, Vermont and Cheshire County, New Hampshire. The lower reservoir of the Northfield Mountain Project is the Turners Falls project impoundment.

The Turners Falls Project is the only project of the five Connecticut River projects that includes federal lands. Approximately 20 acres of federally-owned lands associated with the Department of the Interior's U.S. Geological Survey (USGS) Conte Laboratory is located within the Turners Falls project boundary.

Under the Integrated Licensing Process (ILP), both TransCanada and FirstLight must file their preliminary licensing proposals or draft license applications by December 2, 2015; the final license applications must be filed with the Commission by April 30, 2016, two years before the licenses expire.

Pursuant to NEPA, as amended, Commission staff intends to prepare a multi-project environmental impact statement (EIS), which will be used by the Commission to determine whether, and under what conditions, to issue new licenses for the projects. To support our environmental review, we are engaged in a public scoping process to ensure that all pertinent issues are identified and analyzed and that environmental analysis is thorough and balanced.

In our December 21, 2012, Scoping Document 1 (SD1), we disclosed our preliminary view of the scope of environmental issues associated with the five projects. Based on verbal comments that we received at seven scoping meetings held between January 28 and January 31, 2013 in West Lebanon, NH, Bellows Falls, VT, Brattleboro, VT and Turners Falls, MA, as well as written comments we received throughout the scoping process, we prepared the enclosed Scoping Document 2 (SD2). In addition to six project specific scoping meetings, we held a public scoping meeting specifically to identify cumulatively effected resources and to help identify the incremental effect of licensing the five Connecticut River projects with other past, present and reasonably foreseeable future actions within the Connecticut River Basin.

SD2 serves as a guide to the issues and alternatives to be addressed in the EIS. ***Key changes from SD1 to SD2 are identified in bold and italicized type.***

SD2 is being distributed to the Commission's official mailing list for all five projects (see section 9.0 of the attached SD2). If you wish to be added to or removed from the Commission's official mailing list, please send your request by email to efiling@ferc.gov or by mail to: Kimberly D. Bose, Secretary, Federal Energy Regulatory Commission, 888 First Street, N.E., Room 1A, Washington, DC 20426. All written or

emailed requests must specify your wish to be removed from or added to the mailing list and must clearly identify the project name(s) and FERC number(s) on the first page.

If you have any questions about SD2, or the scoping process, please contact Ken Hogan at (202) 502-8434 or via email at: Kenneth.Hogan@ferc.gov. Additional information about the Commission's licensing process and the TransCanada and FirstLight projects may be obtained from our website, www.ferc.gov, or TransCanada's website www.transcanada-relicensing.com and FirstLight's website www.northfieldrelicensing.com.

Enclosure: Scoping Document 2

cc: Mailing List
Public Files

SCOPING DOCUMENT 2

WILDER PROJECT (FERC NO. 1892-026)

BELLOWS FALLS PROJECT (FERC NO. 1855-045)

VERNON PROJECT (FERC NO. 1904-073)

TURNERS FALLS PROJECT (FERC NO. 1889-081)

NORTHFIELD MOUNTAIN PUMPED STORAGE PROJECT

(FERC NO. 2485-063)

NEW HAMPSHIRE

VERMONT

MASSACHUSETTS

Federal Energy Regulatory Commission
Office of Energy Projects
Division of Hydropower Licensing
Washington, DC

April 2012

TABLE OF CONTENTS

1.0	INTRODUCTION	1
2.0	SCOPING	4
2.1	PURPOSES OF SCOPING	4
2.2	SCOPING COMMENTS.....	5
2.3	ENVIRONMENTAL SITE REVIEW.....	12
3.0	PROPOSED ACTION AND ALTERNATIVES.....	12
3.1	NO-ACTION ALTERNATIVE	13
3.2	TRANSCANADA’S PROJECT FACILITIES AND OPERATIONS	13
3.2.1	Wilder Project	13
3.2.2	Bellows Falls Project.....	14
3.2.3	Vernon Project	15
3.3	FIRSTLIGHT’S PROJECT FACILITIES AND OPERATIONS	16
3.3.1	Turners Falls Project.....	16
3.3.2	Northfield Mountain Pumped Storage Project	17
3.4	LICENSEES’ PROPOSALS	18
3.4.1	Proposed Facilities and Operation	18
3.4.2	Licensees’ Proposed Environmental Measures.....	19
3.5	ALTERNATIVES TO THE PROPOSED ACTION	25
3.6	ALTERNATIVES CONSIDERED BUT ELIMINATED FROM DETAILED STUDY.....	25
3.6.1	Federal Government Takeover.....	25
3.6.2	Non-power License.....	25
4.0	SCOPE OF CUMULATIVE EFFECTS AND SITE-SPECIFIC RESOURCE ISSUES	26
4.1	CUMULATIVE EFFECTS	26
4.1.1	Resources that could be Cumulatively Affected	26
4.1.2	Geographic Scope.....	26
4.1.3	Temporal Scope	28
4.2	TRANSCANADA’S WILDER, BELLOWS FALLS AND VERNON PROJECT RESOURCE ISSUES	28
4.2.1	Geology and Soil Resources	29
4.2.2	Water Resources	29
4.2.3	Aquatic Resources.....	29
4.2.4	Terrestrial Resources.....	29
4.2.5	Threatened and Endangered Species	30
4.2.6	Recreation	31

4.2.7	Land Use	31
4.2.8	Aesthetic Resources.....	31
4.2.9	Socioeconomic Resources	31
4.2.10	Cultural Resources.....	31
4.2.11	Developmental Resources.....	32
4.3	FIRSTLIGHT’S TURNERS FALLS AND NORTHFIELD MOUNTAIN PUMPED STORAGE PROJECT RESOURCE ISSUES.....	32
4.3.1	Geology and Soil Resources	32
4.3.2	Water Resources	32
4.3.3	Aquatic Resources.....	33
4.3.4	Terrestrial Resources.....	33
4.3.5	Threatened and Endangered Species	34
4.3.6	Recreation	34
4.3.7	Land Use	34
4.3.8	Aesthetic Resources.....	35
4.3.9	Socioeconomic Resources	35
4.3.10	Cultural Resources.....	35
4.3.11	Developmental Resources.....	35
5.0	PROPOSED STUDIES	35
6.0	EIS PREPARATION SCHEDULE	38
7.0	PROPOSED EIS OUTLINE	39
8.0	COMPREHENSIVE PLANS	41
9.0	MAILING LIST.....	48
APPENDIX A—STUDY PLAN CRITERIA		
APPENDIX B—PROCESS PLAN AND SCHEDULE		
APPENDIX C— ENTITIES THAT FILED WRITTEN SCOPING COMMENTS		

LIST OF FIGURES

1 PROJECTS' LOCATION MAP 3

LIST OF TABLES

1 INITIAL STUDY PROPOSALS BY PROJECT APPLICANT 36

SCOPING DOCUMENT 2

1.0 INTRODUCTION

The Federal Energy Regulatory Commission (Commission or FERC), under the authority of the Federal Power Act (FPA),¹ may issue licenses for terms ranging from 30 to 50 years for the construction, operation, and maintenance of non-federal hydroelectric projects. On October 31, 2012, TransCanada Hydro Northeast Inc. (TransCanada), licensee for the existing Wilder (FERC No. 1892),² Bellows Falls (FERC No. 1855),³ and Vernon (FERC No. 1904)⁴ hydroelectric projects, filed Pre-Application Documents (PAD) and Notices of Intent (NOI) to file an application for new license with the Commission. On the same date, FirstLight Hydro Generating Company (FirstLight) filed a PAD and NOI to file application(s) for new license(s) for its existing Turners Falls Hydroelectric Project (FERC No. 1889)⁵ and its Northfield Mountain Pumped Storage Project (FERC No. 2485).⁶

The Wilder Project has an installed capacity of 35.6 megawatts (MW), an annual generation of 153,738 megawatt-hours (MWh), and is located on the Connecticut River in Orange and Windsor counties, Vermont, and Grafton County, New Hampshire. The project's dam is located at river mile (RM) 217.4, approximately 1.5 miles upstream of the White River and 7 miles downstream of the Ompompanoosuc River in the Town of Hartford, Vermont, and in the City of Lebanon, New Hampshire. The project's impoundment extends upstream about 45 miles.

¹ 16 U.S.C. § 791(a)-825(r).

² The current license for the Wilder Project was issued with an effective date of December 1, 1979 and expires on April 30, 2018.

³ The current license for the Bellows Falls Project was issued with an effective date of August 1, 1979 and expires on April 30, 2018.

⁴ The current license for the Vernon Project was issued with an effective date of June 1, 1979 and expires on April 30, 2018.

⁵ The current license for the Turners Falls Project was issued with an effective date of May 1, 1980 and expires on April 30, 2018.

⁶ The current license for the Northfield Mountain Project was issued with an effective date of May 1, 1968 and expires on April 30, 2018.

The Bellows Falls Project has an installed capacity of 40.8 MW, an annual generation of 242,829 MWh, and is located on the Connecticut River in Windham and Windsor counties, Vermont, and Cheshire and Sullivan counties, New Hampshire. The project's dam, at RM 173.7, is about 1 mile upstream of Saxtons River and 3 miles downstream of the Williams River in the towns of Bellows Falls and Rockingham, Vermont, and in the town of Walpole, New Hampshire. The project's impoundment extends upstream about 26 miles to Chase Island at Windsor Vermont, about 1 mile below the Windsor Bridge.

The Vernon Project has an installed capacity of **32.4** MW, an annual generation of 131,516 MWh, and is located on the Connecticut River in Windham County, Vermont and Cheshire County, New Hampshire. The project's dam, at RM 141.9, is about 2 miles upstream of the Ashuelot River and 7.4 miles downstream of the West River, in the towns of Vernon, Vermont, and Hinsdale, New Hampshire. The project's impoundment extends about 26 miles upstream, terminating at the Walpole Bridge (Route 123) at Westminster Station, Vermont, about 4 miles downstream of the Bellows Falls Project (FERC No. 1855).

The Turners Falls Project and Northfield Mountain Pumped Storage Project are located on the Connecticut River within Franklin County, Massachusetts, Windham County, Vermont, and Cheshire County, New Hampshire. The greater portion of the Turners Falls Project and Northfield Mountain Project, including developed facilities and most of the lands within the project boundary, are located in Franklin County, Massachusetts; specifically, in the towns of Erving, Gill, Greenfield, Montague, and Northfield. The northern reaches of the Turners Falls Project and Northfield Mountain Project boundary extend to the base of the Vernon dam in the towns of Hinsdale, New Hampshire, and Vernon, Vermont. The Turners Falls Project has an installed capacity of 67.709 MW and an annual generation of 320,140 MWh. The Northfield Mountain Pumped Storage Project has an installed capacity of 1,119.2 MW and an annual generation of 1,143,038 MWh.

The Turners Falls Project's dam is located at approximately RM 122 on the Connecticut River in the towns of Gill and Montague, Massachusetts. The tailrace of the Northfield Mountain Project is located approximately 5.2 miles upstream of Turners Falls Project's dam, in the town of Northfield, Massachusetts. The upper reservoir of the Northfield Mountain Project is located atop Northfield Mountain in Erving, Massachusetts. The Turners Falls impoundment serves as the lower reservoir for the Northfield Mountain Project.

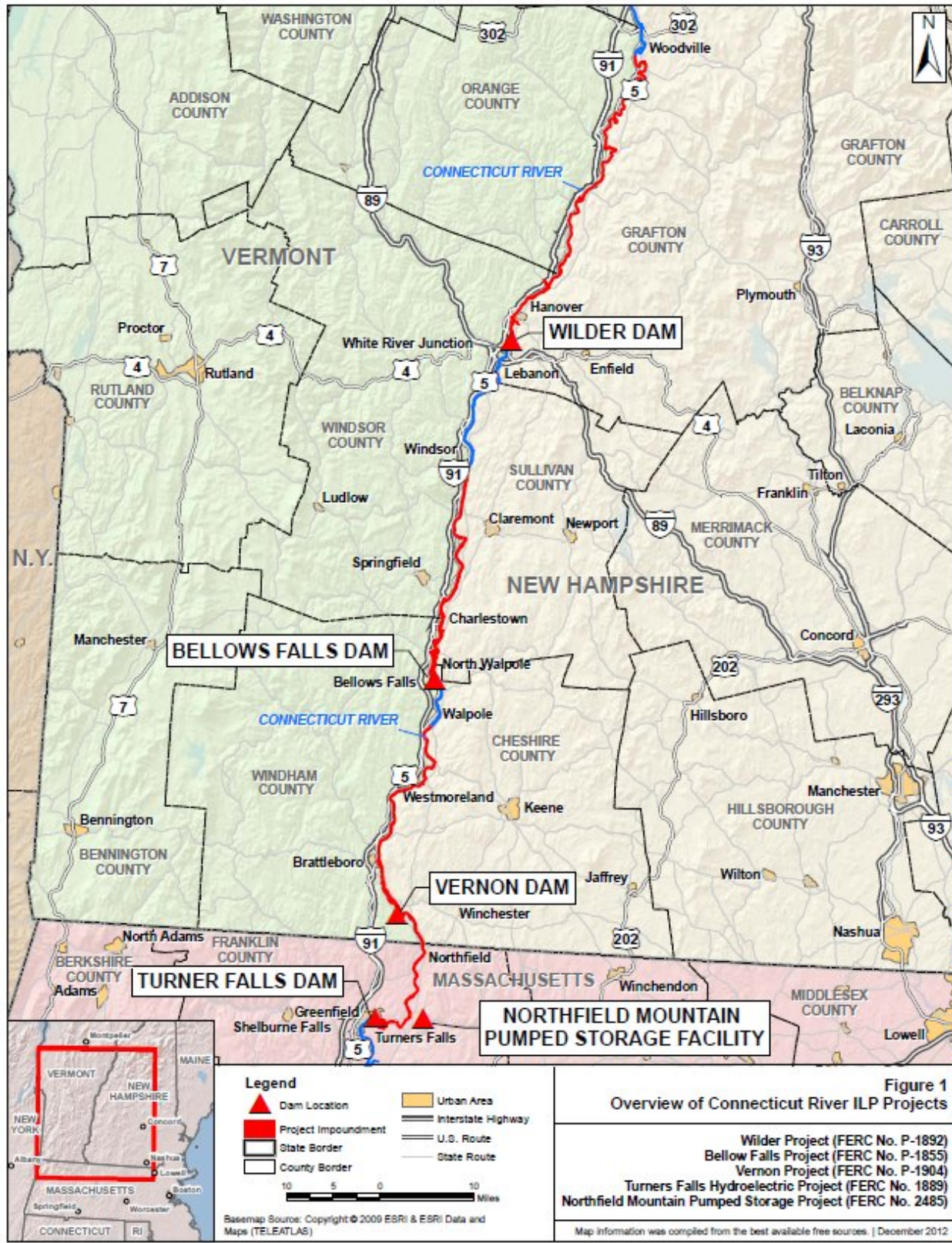


Figure 1. Projects' Location Map

The Turners Falls Project is the only project of the five Connecticut River projects that includes federal lands. Approximately 20 acres of federally-owned lands associated with the Department of the Interior's U.S. Geological Survey (USGS) Conte Laboratory is located within the Turners Falls project boundary. Detailed descriptions of the projects are provided in section 3.0.

The National Environmental Policy Act (NEPA) of 1969,⁷ the Commission's regulations, and other applicable laws require that we independently evaluate the environmental effects of relicensing the Connecticut River projects as proposed, and also consider reasonable alternatives to the licensees' proposed action. At this time, we intend to prepare an environmental impact statement (EIS) for the projects, that describes and evaluates the probable effects, including an assessment of the site-specific and cumulative effects, if any, of the licensees' proposed actions and alternatives, and used by the Commission to determine whether, and under what conditions, to issue new hydropower licenses for the projects. The EIS preparation will be supported by a scoping process to ensure identification and analysis of all pertinent issues.

2.0 SCOPING

This Scoping Document 1 (SD1) is intended to advise all participants as to the proposed scope of the EIS and to seek additional information pertinent to this analysis. This document contains: (1) a description of the scoping process and schedule for the development of the EIS; (2) a description of the licensees' proposed actions and alternatives; (3) a preliminary identification of environmental issues and the licensees' proposed studies; (4) a request for comments and information; (5) a proposed EIS outline; and (6) a preliminary list of comprehensive plans that are applicable to the projects.

2.1 PURPOSES OF SCOPING

Scoping is the process used to identify issues, concerns, and opportunities for enhancement or mitigation associated with a proposed action. According to NEPA, the process should be conducted early in the planning stage of the project. The purposes of the scoping process are as follows:

- invite participation of federal, state and local resource agencies, Indian tribes, non-governmental organizations (NGOs), and the public to identify significant environmental and socioeconomic issues related to the proposed project;

⁷ National Environmental Policy Act of 1969, 42 U.S.C. §§ 4321-4370(f) (2006).

- determine the resource issues, depth of analysis, and significance of issues to be addressed in the EIS;
- identify how the project would or would not contribute to cumulative effects in the project area;
- identify reasonable alternatives to the proposed action that should be evaluated in the EIS;
- solicit, from participants, available information on the resources at issue, including existing information and study needs; and
- determine the resource areas and potential issues that do not require detailed analysis during review of the project.

2.2 SCOPING COMMENTS

The Commission issued Scoping Document 1 (SD1) on December 21, 2012, to enable resource agencies, Indian tribes, NGOs, and the public to more effectively participate in and contribute to the scoping process. In SD1, we requested clarification of preliminary issues concerning the proposed projects and identification of any new issues that need to be addressed in the multi-project EIS. We revised SD1 following the scoping meetings and after reviewing comments filed during the scoping comment period. SD2 presents our current view of issues to be considered in the EIS. ***Key changes from SD1 to SD2 are identified in bold and italicized type.***

The Commission conducted six project specific public scoping meetings in the vicinity of the projects between January 28, 2013 and January 31, 2013. In addition to the six project-specific scoping meetings the Commission held a public scoping meeting specifically to identify cumulatively effected resources and to help identify the incremental effect of licensing the five Connecticut River projects with other past, present and reasonably foreseeable future actions within the Connecticut River Basin. Each meeting was widely attended and was recorded by a court reporter.

In addition to the comments received at the scoping meetings, the Commission received 97 comment letters from resource agencies, NGOs, and the public (Appendix C). All comments received are part of the Commission's official record for the project. Information in the official file is available for inspection and reproduction at the Commission's Public Reference Room, located at 888 First Street, NE, Room 2A, Washington, DC 20426, or by calling (202) 502-8371. Information also may be accessed through the Commission's eLibrary system using the "Documents & Filings"

link on the Commission's webpage at <http://www.ferc.gov>. Call (202) 502-6652 for assistance.

The majority of comments identified concerns about potential project effects on fish and wildlife resources and habitat, recreation use and access, and shoreline erosion. Many of these comments fall within the scope of issues identified in SD1 and will be addressed as part of the environmental analysis of the proposed project; therefore, no modifications to the scoping document were necessary. However, several issues were raised that were not identified in SD1 and we have modified SD2 accordingly. Below we summarize other comments and provide responses by subject area.

Administrative Comments

Comment: Franklin Conservation District, Landowners and Concerned Citizens for License Compliance and The Town of Gill stated that development and implementation of a closed loop system for the operation of Northfield Mountain Pumped Storage Project should be evaluated as part of the NEPA implementation process.

Response: Response: Construction of a new lower reservoir would likely have significant impacts on the environment and a high cost. Therefore, we will not commit to conducting a detailed analysis of such an alternative until we better understand the environmental effects of the existing project.

Comment: Two Rivers-Ottauquechee state the true extent of operational impacts will only be illuminated if FERC analyzes each alternative proposed in this application process against the conditions that existed in the Connecticut River before any dams were constructed, and pre-dam conditions should be analyzed for purposes of evaluating and determining baseline environmental conditions.

Response: Commission policy states that the environmental baseline of a hydropower relicensing is the environment as it exists at the time of relicensing, not pre-project conditions. However, we recognize that available knowledge of pre-project conditions may help inform the Commission's decisions concerning appropriate environmental measures due to continuing impacts.

Comment: FWS, The Nature Conservancy and Two Rivers-Ottauquechee state that eliminating project decommissioning from further review, prior to scoping is premature. Two Rivers-Ottauquechee requests that decommissioning of the Wilder Project is considered in the Commission's NEPA document and FWS states in general, that decommissioning should be evaluated for the Connecticut River projects. FWS also notes that study results of the Northfield Mountain project may demonstrate project

effects that either cannot be mitigated for or mitigation would be cost prohibitive. As a result, FWS emphasizes that a decommissioning alternative for the Northfield Mountain project be retained.

*Response: Decommissioning some or all of Connecticut River projects would require denying the relicense applications and surrender or termination of the existing licenses with appropriate conditions. There would be significant costs involved with decommissioning the projects and/or removing project facilities. The projects provide a viable, safe, and clean renewable source of power to the region. Based on the 17 factors (to be considered when determining whether a more thorough analysis of decommissioning is warranted), outlined in *The Interagency Task Force Report on NEPA Procedures in FERC Hydroelectric Licensing*,⁸ we do not consider decommissioning to be a reasonable alternative for the Connecticut River projects, at this time. We have, however, deleted section 3.6.3 Project Decommissioning from SD2 as an alternative considered but eliminated from detailed study in section 3.6.*

Cumulative Effects

Comment: The Nature Conservancy suggests cumulative effects include potential impacts of future climate changes on a 30 -50 year time frame and that the models developed by researchers at the University of Massachusetts at Amherst, to estimate predicted climate-impacted flows throughout the Connecticut River basin, be used to evaluate temporal cumulative effects on the identified resources with regard to climate-induced changes in the flow regime.

Response: As is our practice, we intend to evaluate a range of flow release alternatives that take into consideration both high and low water years and to condition any license that may be issued to adaptively manage for these variations in water years. Similar to other hydroelectric licensing cases, the effects of the projects on environmental resources in the projects' area can be effectively studied and evaluated using conventional hydrologic studies and monitoring techniques to address any potential effects of climate change on the projects and the environmental resources of the Connecticut River. However, if the University of Massachusetts at Amherst's model were made available to the Commission and proven to accurately and reliably predict specific resource effects sufficient to serve as the basis for informing license conditions, we may consider using the model when evaluating the cumulative effect climate-induced changes may have on the flow regime of the Connecticut River; and therefore, on the Connecticut River projects.

⁸ http://www.ferc.gov/industries/hydropower/indus-act/itf/nepa_final.pdf

Comment: The Nature Conservancy recommends, for the purpose of the cumulative effects analysis, water quantity be defined to include: flow magnitude, flow frequency, flow duration, flow timing, and rate of change.

Response: We have revised Section 4.1.1 to incorporate this definition.

Comment: FirstLight and the Connecticut River Watershed Council request the geographic scope of the cumulative effects analysis on water quantity; extend upstream to the Fifteen Mile Falls Project (FERC No. 2077), due to the influence of both the peaking and seasonal storage operations of the Fifteen Mile Falls Project.

Response: We have revised Section 4.1.2 to reflect a geographic scope of the cumulative effects on water quantity upstream to the Fifteen Mile Falls Project.

Comment: The Connecticut River Watershed Council and the Nature Conservancy stated that Holyoke dam should be the downstream extent of the geographic scope for the cumulative effects analysis of both water quantity and water quality. FWS commented that the downstream geographic scope of this cumulative effects analysis should be to the mouth of the Connecticut River at Long Island Sound.

Response: We have revised Section 4.1.2 to define the geographic downstream limit of our cumulative effects assessment on water quantity and water quality will be the mouth of the Connecticut River at Long Island Sound.

Comment: The Nature Conservancy stated that the cumulative effects analysis on fishery resources be established as the upstream extent of the Wilder reservoir downstream to Sunderland, Massachusetts. They also stated that the cumulative effects analysis include freshwater mussels within this same area. FWS requested that the geographic scope for cumulatively effected fishery resources be from the upstream extent of the Wilder reservoir to the mouth of the Connecticut River at Long Island Sound.

Response: We have revised Sections 4.1 and 4.1.2 to define the geographic limits of the study of cumulative effects on fishery resources to be between the upstream extent of the Wilder reservoir to the mouth of the Connecticut River at Long Island Sound for anadromous, catadromous, and diadromous fish species and from the upstream extent of the Wilder reservoir to the Route 116 bridge in Sunderland, Massachusetts for resident fish species and freshwater mussels.

Comment: The Connecticut River Watershed Council and The Nature Conservancy stated that the cumulative effects analysis should include the effects of

hydropower projects on floodplain communities and FWS added that related terrestrial resources also be considered for cumulative effects.

Response: We have revised Section 4.1 to include cumulative effects from hydropower projects on floodplain communities and terrestrial resources to include the 100-year floodplain (as defined by the Federal Emergency Management Agency) adjacent to the project-affected areas from the upstream extent of the Wilder reservoir downstream to the Route 116 bridge in Sunderland, Massachusetts.

Comment: The Connecticut River Watershed Council stated that sediment movement, or the lack thereof, is a cumulative effect of the dams and should be considered between the Fifteen Mile Falls project and the Holyoke dam (FERC No. 2004).

Response: We have revised Section 4.1, 4.2.1 and 4.3.1 to include cumulative effects on sediment movement associated with the operation of the five hydroelectric projects and established the geographic limits of this assessment as the area between the upper extent of the Wilder reservoir and the Route 116 bridge in Sunderland, Massachusetts, which is the upper extent of the Holyoke Project.

Comment: The Connecticut River Watershed Council stated that the cumulative effects analysis should include the effects of hydropower projects on recreational uses, particularly those associated with multi-day paddle trips and related river access and camping opportunities.

Response: We recognize that multiple dams on the Connecticut River may cumulatively affect recreational uses associated with multi-day paddle trips. As such, we have modified section 4.1.2 to include multi-day paddle trips as a cumulatively effected recreational resource and establish a potential geographic scope.

Geology and Soil Resources

Comment: Comments from FWS, New Hampshire Department of Fish and Game (NH Fish and Game), New Hampshire Department of Environmental Services (NH DES), Massachusetts Department of Environmental Protection (Mass DEP), NGOs, and other stakeholders raised concerns that the projects may affect sedimentation and sediment transport and subsequently aquatics and shallow water habitats of the Connecticut River.

Response: We have revised sections 4.2.1 and 4.3.1 to include sedimentation transport and deposition affects on aquatics and shallow water habitat.

Water Resources

Comment: Two Rivers-Ottawquechee commented that list of resource issues identified in section 4.2 of SD1 does not match the studies proposed by TransCanada and they are unclear if TransCanada will be required to address those issues.

Response: The resource issues identified in SD1 are not intended to be exhaustive or final, but are an initial listing of issues we identified as potentially needing analysis in our environmental document. This SD2 includes a revised list of issues developed through our NEPA scoping process that we will address in our multi-project EIS. To support our analysis, the Commission's Integrated Licensing Process is designed to identify information gaps and develop study plans for both TransCanada and First Light to fill those information gaps. This will involve an opportunity for stakeholders to review proposed study plans filed by TransCanada and First Light by April 15, 2013, and file comments with the Commission within 90 days (see Appendix B: Process Plan and Schedule).

Project Facilities and Operations

Comment: TransCanada commented that the Vernon Project's installed capacity identified in Section 1.0 is incorrect and the correct installed capacity is 32.4 MW.

Response: We have revised Section 1.0 to reflect an installed capacity of 32.4 MW at the Vernon Hydroelectric Project.

Comment: Two Rivers-Ottawquechee stated that there is a discrepancy in the draw-down elevations between the description of draw-down in the Wilder facilities section and current license requirements. TransCanada commented that the full pond elevation of Wilder is 385.0 feet mean sea level, not 384.5 feet as stated in Section 3.1.1.1.

Response: We have revised Section 3.1.1.1 to reflect that the full pond elevation at Wilder is 385.0 feet mean sea level, which addresses the identified draw-down discrepancy.

Comment: Two Rivers-Ottawquechee stated that there is a discrepancy in the hydraulic capacity calculations of the turbines at the Wilder facility.

Response: We have revised Section 3.2.1.2 to reflect the hydraulic capacity of 12,700 cfs.

Aquatic Resources

Comment: FWS stated that entrainment effects should not be limited to fish populations, but should include impacts to food web interactions and overall ecosystem productivity.

Response: The scope of our analysis identified in SD1 and in sections 4.2 and 4.3 below, is adequate to evaluate project effects on entrainment and the environmental resources of the Connecticut River projects.

Recreation

Comment: TransCanada commented that some of the information on existing project recreation facilities at the Bellows Falls Project and the Vernon Project was incorrect.

Response: We have corrected sections 3.4.2.2 and 3.4.2.3 to describe the existing project recreation facilities.

Comment: National Park Service (NPS) and several stakeholders stated that consideration should be given to a variety of recreation activities, including whitewater boating and rock climbing.

Response: We have revised Sections 4.2.6 and 4.3.6 to indicate the scope of recreation activities to be analyzed.

Comment: NPS and other stakeholders stated that reservoir levels at each of the projects and stream flows in the bypassed reaches at Bellows Falls and Turners Falls have the potential to effect recreational boating.

Response: We have revised Sections 4.2.6 and 4.3.6 to include the effects of reservoir fluctuations and flows on recreation.

Comment: Several stakeholders state that consideration should be given to recreation access, including hiking trails, non-motorized boating access, and portage trails, and that some existing recreation facilities were in need of maintenance and improvement, or extended hours of operation.

Response: We have revised Sections 4.2.6 and 4.3.6 to indicate the scope of recreation facilities to be analyzed.

Aesthetic Resources

Comment: NPS, Vermont Department of Conservation, and other stakeholders stated that the projects features and operation have the potential to affect the visual aesthetics of the surrounding landscape, notably the bypassed reaches at Bellows Falls and Turners Falls.

Response: We have revised Sections 4.2.8 and 4.3.8 to indicate that the effects of the projects on aesthetic resources will be analyzed.

Socioeconomic Resources

Comment: NPS and other stakeholders requested consideration of the socioeconomic effects of project operations on the lack of flows provided in the bypass reach of Bellow Falls and Turners Falls projects and the resulting loss of recreational opportunity.

Response: It is premature to address the socioeconomic effects of whitewater boating in the bypass reach of Bellow Falls and Turners Falls projects until the feasibility of whitewater boating is determined for these river reaches.

2.3 ENVIRONMENTAL SITE REVIEW

An environmental site review (site visit) is typically held in conjunction with the Commission's NEPA scoping meetings. However, Commission staff anticipated that access to some project facilities would be limited by winter weather conditions during the early part of 2013 when scoping for these projects was scheduled. For this reason, and to provide all interested stakeholders an opportunity to view the projects' facilities, the Commission hosted the environmental site reviews in October 2012, before the onset of winter. Public notice of the environmental site reviews was issued on August 3, 2012, and published in eight newspapers from the Connecticut River projects' region. The site visits were widely attended by individuals representing, local, state, and federal government agencies, NGOs, and members of the public. At this time, the Commission does not intend to host any future environmental site reviews for the five Connecticut River projects.

3.0 PROPOSED ACTION AND ALTERNATIVES

In accordance with NEPA, the environmental analysis will consider the following alternatives, at a minimum: (1) the no-action alternative, (2) the applicant's proposed action, and (3) alternatives to the proposed action.

3.1 NO-ACTION ALTERNATIVE

Under the no-action alternative, the Connecticut River Projects would continue to operate as required by the current project licenses (i.e., there would be no change to the existing environment). No new environmental protection, mitigation, or enhancement measures would be implemented. We use this alternative to establish baseline environmental conditions for comparison with other alternatives.

3.2 TRANSCANADA'S PROJECT FACILITIES and OPERATIONS

3.2.1 Wilder Project

3.2.1.1 Facilities

The Wilder Project is located on the Connecticut River at RM 217.4, approximately 1.5 miles upstream of the White River and 7 miles downstream of the Ompompanoosuc River. The dam is a concrete gravity structure extending across the Connecticut River from Hartford, Vermont, to Lebanon, New Hampshire and includes an earthen embankment about 400 feet long, a non-overflow gravity concrete bulkhead wall 232 feet long, a concrete forebay intake 208 feet long, a gravity concrete spillway about 526 feet long and 59 feet in maximum height, and another earthen embankment about 180 feet long. The impoundment extends upstream 45 miles from the dam and has a usable storage capacity of 13,350 acre-feet at a five-foot drawdown from full pond at elevation 385 feet mean sea level (msl), a surface area of 3,100 acres at full pond and a drainage area of 3,375 square miles (mi²). The powerhouse contains three generating units with a total authorized installed capacity of 35.6 MW which generated an average of 153,738 MWh annually from 1982 – 2011. The generating units consist of two 19-MW adjustable blade Kaplan turbines with an approximate per unit hydraulic capacity of 6,000 cubic feet per second (cfs), and one 3-MW vertical Francis turbine with an approximate hydraulic capacity of 700 cfs. Water flowing through the project's turbines is discharged via the project's draft tubes into the tailrace immediately below the dam.

3.2.1.2 Operations

The project is operated as a load-following or peaking⁹ hydroelectric project, with a capability to utilize 13,350 acre-feet of storage (a 5-foot drawdown) for generation

⁹ Load-following or peaking projects seek to maximize electrical power generation when the cost of power is high; when the cost of power is low, project generation is reduced, and a portion of the inflow to the project's reservoir is stored within the reservoir for use during the next peak generation period.

purposes.¹⁰ During generation, downstream flows can vary between the required minimum flow of 675 cfs¹¹ and the facility's approximate full hydraulic capacity of 12,700 cfs. During periods of sustained high flows,¹² the Project's generation is continuous and peaking operations are ceased. The Wilder Project's operations are coordinated with other TransCanada hydroelectric generating facilities on the Connecticut River, taking into consideration variations in demand for electricity as well as natural flow variations.

3.2.2 Bellows Falls Project

3.2.2.1 Facilities

The Bellows Falls Project is located on the Connecticut River at RM 173.7, about 1 mile upstream of Saxtons River and 3 miles downstream of the Williams River at the upper end of a sharp bend of the Connecticut River at Bellows Falls, Vermont. The dam is a concrete gravity structure extending across the Connecticut River from the town of Rockingham, Vermont to the town of Walpole, New Hampshire and is 643 feet long with maximum height of 30 feet. The impoundment extends upstream 26 miles from the dam and has a usable storage capacity of 7,476 acre-feet at a three-foot drawdown from the normal full pond at elevation 291.6 feet msl, a surface area of approximately 2,804 acres at full pond and a drainage area of 5,414 mi². The powerhouse contains three generating units with an authorized installed capacity of 40.8 MW which generated an average of 250,249 MWh annually from 2000 – 2011. The generating units consist of three 16-MW vertical Francis turbines with an approximate per unit hydraulic capacity of 3,670 cfs.

3.2.2.2 Operations

The project is operated as a load-following or peaking hydroelectric project, with a capability to utilize 7,476 acre-feet of storage (a 3-foot drawdown) for generation purposes.¹³ During generation, downstream flows can vary between the required minimum flow of 1,083 cfs¹⁴ and the facility's approximate full hydraulic capacity of 11,400 cfs. During periods of sustained high flows,¹⁵ project generation is continuous and peaking operations are ceased. The Bellows Falls Project operations are coordinated with other TransCanada hydroelectric generating facilities on the Connecticut River,

¹⁰ TransCanada typically utilizes a 2.5 foot drawdown for its peaking operations.

¹¹ Typically, TransCanada provides the minimum flow of 700 cfs through its Unit No. 3.

¹² Daily average flow at or above the facility's full hydraulic capacity.

¹³ TransCanada, typically utilizes a 1.8 foot drawdown for its peaking operations.

¹⁴ TransCanada usually provides the minimum flow of 1,300 cfs through one generating unit.

¹⁵ Daily average flow at or above the facility's full hydraulic capacity.

taking into consideration variations in demand for electricity as well as natural flow variations.

3.2.3 Vernon Project

3.2.3.1 Facilities

The Vernon Project is located on the Connecticut River at RM 141.9, about 2 miles upstream of the Ashuelot River and 7.4 miles downstream of the West River. The dam is a composite overflow and non-overflow ogee type concrete gravity structure extending across the Connecticut River between Hinsdale, New Hampshire, and Vernon, Vermont. It is 956 feet long with a maximum height of 58 feet, and consists of the integral powerhouse with a sluice gate block section that is about 356 feet long, and a concrete overflow spillway section about 600 feet long. The maximum dam height is 58 feet. The impoundment extends upstream 26 miles from the dam and has a usable storage capacity of 18,300 acre-feet at an eight-foot drawdown from the normal full pond at elevation 220.1 feet msl, a surface area of approximately 2,550 acres at full pond and a drainage area of 6,266 mi². The powerhouse is integral to the dam and contains ten turbine/generators with an authorized installed capacity of 32.4-MW which generated an average of 136,583 MWh annually from 2000 – 2011. The generating units consist of two 2.5-MW vertical Francis turbines with an approximate per unit hydraulic capacity of 1,465 cfs, two 2.5-MW vertical Francis turbines with an approximate per unit hydraulic capacity of 1,465 cfs at 35 feet of head, four 4-MW vertical Kaplan turbines with an approximate per unit hydraulic capacity of 1,800 cfs, and two 4.2-MW vertical Francis turbines with an approximate per unit hydraulic capacity of 2,035 cfs at 34 feet of head.

3.2.3.2 Operations

The project is operated as a load-following or peaking hydroelectric project, with a capability to utilize 18,300 acre-feet of storage (an 8-foot drawdown) for generation purposes.¹⁶ During generation, downstream flows can vary between the required minimum flow of 1,250 cfs¹⁷ and the facility's approximate full hydraulic capacity of 17,100 cfs. During periods of sustained high flows,¹⁸ project generation is continuous and peaking operations are ceased. The Vernon Project operations are coordinated with other TransCanada hydroelectric generating facilities on the Connecticut River, taking into consideration variations in demand for electricity as well as natural flow variations.

¹⁶ TransCanada, typically utilizes a 2 foot drawdown for its peaking operations.

¹⁷ Typically, TransCanada provides the minimum flow of 1,600 cfs through one generating unit.

¹⁸ Daily average flow at or above the facility's full hydraulic capacity.

3.3 FIRSTLIGHT'S PROJECT FACILITIES AND OPERATIONS

3.3.1 Turners Falls Project

3.3.1.1 Facilities

The Turners Falls dam is located on the Connecticut River at approximately RM 122 in the towns of Gill and Montague, Massachusetts. The dam consists of two individual concrete gravity dams, referred to as the Gill dam and Montague dam, which are connected by a natural rock island known as Great Island. The Montague dam is approximately 35 feet high and 630 feet long, is founded on bedrock and connects Great Island to the west bank of the Connecticut River. The Gill dam is approximately 55 feet high and 493 feet long extending from the Gill shoreline (east bank) to Great Island. The Turners Falls impoundment (which also serves as the lower reservoir for the Northfield Mountain Project), is approximately 20 miles long, extending upstream through the Connecticut River valley to the base of Vernon dam. The impoundment has a surface area of approximately 2,110 acres and a gross storage capacity of 21,500 acre-feet at elevation 185.0 feet msl (as measured at Turners Falls dam) and also serves as the lower reservoir for the Northfield Mountain Pumped Storage Project. Most of the Turners Falls impoundment lies in Massachusetts; however, approximately 5.7 miles of the northern portion of the impoundment are located in New Hampshire and Vermont. At Turners Falls dam, the total drainage area is approximately 7,163 mi², or about 64% of the Connecticut River Basin drainage area (11,250 mi²). The project includes two powerhouses, Station No. 1 and Cabot Station, which together have an authorized installed capacity of 67.709 MW which generated an average of 320,140 MWh annually from 2000-2009. Station No. 1 contains seven turbine/generators of which five are currently operational. Station No. 1 generating units consist of single runner vertical Francis turbines. The approximate turbine and hydraulic capacities of each unit are as follows: 2,100hp/560 cfs for Unit 1; 590hp/140 cfs for Unit 2; 1,900hp/500 cfs for Unit 3; Unit 4 is non-operational; 1,635hp/490 cfs for Unit 5; Unit 6 is non-operational; and 1,955hp/520 cfs for Unit 7. Cabot Station generating units consist of six vertical single runner Francis turbines. The approximate turbine and hydraulic capacities of each of the Cabot unit are 13,867hp/2,288 cfs.

3.3.1.2 Operations

The project is operated as a load-following or peaking hydroelectric project, and we estimate that it has the capability to utilize about 7,000 acre-feet of storage¹⁹ for generation

¹⁹ We estimate the usable storage capacity of the Turners Falls Project impoundment to be no more than 16,050 acre-feet (at a 9-foot drawdown); however, the Northfield Mountain Pumped Storage Project typically utilizes 12,318 acre-feet of this storage when

purposes.²⁰ The Turners Falls impoundment also serves as a lower reservoir to the Northfield Mountain Project. During generation downstream flows can vary between the required minimum flow of 1,433 cfs²¹ and the facility's approximate full hydraulic capacity of 15,938 cfs. During periods of sustained high flows, project generation is continuous and peaking operations are ceased. The Turners Falls Project's operations are coordinated with other FirstLight hydroelectric generating facilities on the Connecticut River, taking into consideration variations in demand for electricity as well as natural flow variations.

3.3.2 Northfield Mountain Pumped Storage Project

3.3.2.1 Facilities

The tailrace of the Northfield Mountain Project is located approximately 5.2 miles upstream of Turners Falls dam, in the town of Northfield, Massachusetts, and in the Turners Falls impoundment. The upper reservoir of the Northfield Mountain Project is located atop Northfield Mountain in Erving, Massachusetts and consists of a main dam, rockfill dikes and a concrete gravity dam. The upper reservoir typically operates between elevations 1,000.5 feet msl and 938 msl which provide a 62.5 foot drawdown. Within this range of fluctuation, the upper reservoir has a surface area of 134 and 286 acres at elevations 938 and 1,000 feet msl, respectively, and approximately 12,318 acre-feet of usable storage. The underground powerhouse contains four reversible pump/turbines that operate at gross heads ranging from 753 to 824.5 msl. The project has an authorized installed capacity of 1,119.2 MW (Unit 1: 267.9 MW, Unit 2: 291.7 MW, Unit 3: 291.7 MW and Unit 4: 267.9 MW). The approximate station hydraulic capacity is 15,200 cfs (3,800 cfs per/pump) in pumping mode and 20,000 cfs (5,000 cfs per/turbine) in a generation mode.

3.3.2.2 Operations

The project is a pumped storage hydroelectric project, with a capability to utilize 12,318 acre-feet of storage (a 62.5-foot drawdown) for generation purposes. The project utilizes the Turners Falls impoundment as its lower reservoir. During pumping operations, water is pumped from the Turners Falls Impoundment to the upper reservoir. In the summer and winter seasons, the Northfield Mountain Project typically peaks twice

filling its upper reservoir, resulting in about 3,700 acre-feet of usable storage for the Turners Falls Project generation.

²⁰ FirstLight, typically utilizes a 3.7 foot drawdown for its peaking operations.

²¹ Typically, FirstLight maintains the minimum flow requirement through discharges at Cabot Station and/or Station No. 1. Compliance with FirstLight's minimum flow requirement is measured downstream of Cabot Station and is the sum of all project facilities' discharges.

a day - in the morning and late afternoon. During other months, commonly called shoulder months, the Northfield Mountain Project may be peaked one to two times a day, pending electrical demand and/or price. In both cases, water is typically pumped back to the upper reservoir during the night or during low energy priced hours. When operating in a pumping mode, the approximate hydraulic capacity of the project is 15,200 cfs. Alternatively, when operating in a generation mode, the approximate hydraulic capacity is 20,000 cfs.

3.4 LICENSEES' PROPOSALS

TransCanada and FirstLight are in the process of evaluating their respective project facilities and operation to assess potential additions or modifications to increase power generation, improve efficiency, or reduce costs under a new license.

TransCanada and FirstLight are not currently proposing any new environmental measures at the projects.

3.4.1 Proposed Facilities and Operation

At this time, TransCanada is not proposing any changes to the licensed project facilities or operation at the Wilder, Bellows Falls or Vernon projects, but notes they will continue to evaluate upgrades as opportunities present themselves during the relicensing process.

FirstLight is evaluating a series of potential changes to facilities and operation of the Turners Falls and Northfield Mountain Pumped Storage projects during relicensing including the following:

- Upgrade Station No. 1 with new or rehabilitated turbines.
- Close Station No. 1 and adding a turbine generator at Cabot of similar hydraulic capacity to Station No. 1's.
- Use full hydraulic capacity of Cabot Station turbines.
- Utilize more storage in the Northfield Mountain Project's upper reservoir.
- Increase the unit and station capacity at the Northfield Mountain Project.

As the relicensing process proceeds, FirstLight will conduct further investigations to determine if potential modifications are feasible.

If TransCanada and/or FirstLight decide to include one or more facility upgrades in its application for a new license, studies may be needed to evaluate the potential effects of such upgrades on environmental resources.

3.4.2 Licensees' Proposed Environmental Measures

At this time, TransCanada and FirstLight have not proposed any changes to existing environmental measures (consisting of current license conditions and voluntary measures) and they do not propose any new measures. TransCanada and FirstLight propose to continue operating their perspective projects with the existing environmental protection, mitigation, and enhancement (PM&E) measures described in the following section.

3.4.2.1 Wilder Project

Water Resources

Current License Requirements

- Limit reservoir drawdown to elevation 380 feet (a 5-foot drawdown).
- Maintain a continuous minimum flow of 675 cfs (0.20 cubic feet per second per square mile of drainage basin).

Voluntary Measures

- Limit reservoir drawdown to 2.5 feet versus the allowed 5.0-foot drawdown.
- Limit reservoir drawdown rates to 3-tenths of a foot per hour.
- Provide a minimum instream flow of about 700 cfs (25 cfs above license requirement).

Aquatic Resources

Current License Requirements

- Provide upstream fish passage for migrating Atlantic salmon and American shad.
- Provide downstream fish passage for outmigrating fish.

Recreation Resources

Current License Requirements

- Operate and maintain a public viewing area with an observation deck and underwater window at upstream fish passage facility.
- Operate and maintain eight recreation facilities that include one car-top boat launch, two boat ramps, two angler access areas, one dock, one portage trail, one

water trail campsite, two picnic areas, one natural area, a network of hiking trails, and an athletic field.

Voluntary Measures

- From the Friday before Memorial Day through the last weekend in September, maintain a minimum reservoir elevation of 382.5 feet from Fridays at 4 pm through Sundays at midnight and on holidays.
- Issue permits to a local government and educational institution to operate two recreation facilities that provide a recreation access, trail network, picnic area, athletic fields, and restrooms.

3.4.2.2 Bellows Falls Project

Water Resources

Current License Requirements

- Limit reservoir drawdown to elevation 288.63 feet (a 3-foot drawdown).
- Maintain a continuous minimum instream flow of 1,083 cfs.

Voluntary Measures

- Limit the typical reservoir drawdown to 2 feet versus the allowed 3 feet.
- Limit reservoir drawdown rates to three-tenths of a foot per hour.
- Provide a minimum instream flow of about 1,300 cfs (217 cfs above license requirement).

Aquatic Resources

Current License Requirements

- Maintain and operate an upstream vertical slotted weir fish ladder at the powerhouse and an upstream concrete barrier dam in the bypass reach.
- Provide downstream passage via the forebay sluiceway/skimmer gate.

Recreation Resources

Current License Requirements

- Operate and maintain a visitor center and underwater window at the upstream fish passage facility.

- Operate and maintain *four* recreation facilities that include one car-top boat launch, *three* boat ramps, one portage trail, and two picnic areas.

Voluntary Measures

- From the Friday before Memorial Day through the last weekend in September, maintain a minimum reservoir elevation of 289.5 feet from Fridays at 4 pm through Sundays at midnight and on holidays.
- Issue permits to state and local governments to operate six recreation facilities that provide three car-top boat launches, three boat ramps, one fishing platform, and one marina.

3.4.2.3 Vernon Project

Geology and Soil Resources

Current License Requirements

- Develop and implement an erosion monitoring plan for the east bank below Vernon dam, with biennial monitoring.

Water Resources

Current License Requirements

- Maintain a continuous minimum instream flow of 1,250 cfs.
- Limit reservoir drawdown to an elevation of 212.13 feet (an 8-foot drawdown).

Voluntary Measures

- Limit the typical reservoir drawdown to 2 feet versus the allowed 8 feet.
- Limit reservoir drawdown rates to 3-tenths of a foot per hour.
- Provide a minimum instream flow of about 1,600 cfs (350 cfs above licensed requirement).

Aquatic Resources

Current License Requirements

- Maintain and operate an upstream fish passage facility designed to pass migrating Atlantic salmon and American shad upstream past the dam, including a viewing, counting and trapping area.

- Provide downstream fish passage.

Recreation Resources

Current License Requirements

- Operate and maintain six recreation facilities that include one car-top boat launch, one boat ramp, one water trail campsite, one portage trail, one angler access area, one area of open space, and one picnic area.
- Provide potable water at Vernon Glen and Governor Hunt recreation facilities.

Voluntary Measures

- From the Friday before Memorial Day through the last weekend in September, maintain a minimum reservoir elevation of 218.6 feet from Fridays at 4 pm through Sundays at midnight and on holidays.

Land Use

Current License Requirements

- Provide the Vernon Neck Demonstration Forest Area (an area designated as a natural area, with only limited public use).

Cultural Resources

Current License Requirements

- Provided photographic documentation of the powerhouse.
- Conducted digital video documentation at key stages of the project to record the removal of the original equipment and installation of the new equipment.

Voluntary Measures

- Donates generating and electrical equipment removed from the powerhouse to museums and educational organizations.

3.4.2.4 Turners Falls Project

Water Resources

Current License Requirements

- Limit reservoir drawdown to elevation 176.0 feet (a 9-foot drawdown).
- Provide a minimum instream flow of 1,433 cfs (Modifications to this flow amount are required at various times of the year to address fisheries issues, as described in the following Aquatic Resources section).

Voluntary Measures

- Limit the typical reservoir drawdown to 3.7 feet versus the allowed 9 feet.

Aquatic Resources

Current License Requirements

- Operate and maintain three upstream fish passage facilities (Cabot fishway, the Spillway fishway, and the Gatehouse fishway) for Atlantic salmon and American shad.
- Provide a continuous minimum instream flow of 200 cfs in the bypass reach starting on May 1, and increase to 400 cfs when fish passage starts by releasing flow through a bascule gate at the dam.²²

Voluntary Measures

- Provide downstream fish passage at Cabot Station from approximately April 1 through November 15.

²² The 400 cfs continuous minimum instream flow is provided through July 15, unless the upstream fish passage season has concluded early, in which case the 400 cfs flow is reduced to 120 cfs to protect shortnose sturgeon. The 120 cfs continuous minimum instream flow is maintained in the bypass reach from the date the upstream fishways are closed (or by July 16) until the river temperature drops below 7°C, which typically occurs around November 15th.

Recreation Resources

Current License Requirements

- Operate and maintain two parks and other access areas at the project; facilities include one canoe portage, one tailwater fishing facility, one trail, two picnic areas, and one interpretive display.

Land Use

Voluntary Measures

- Granted permissions for non-project uses of project lands in accordance with the provisions of the Turners Falls and Northfield projects' licenses. These non-project uses include uses of project lands for a parking area, the Conte Fish Lab, a fire pond, a privately owned boat club, private camps, landscaping activities, agricultural uses, communications antennas, docks, a NPDES discharge, and water withdrawals.

3.4.2.5 Northfield Mountain Project

Geology and Soil Resources

Current License Requirements

- Monitor and remediate stream bank erosion within the Turners Falls impoundment.

Aquatic Resources

Current License Requirements

- Deploy a fixed-position guide net to reduce entrainment of Atlantic salmon smolts at the project's lower reservoir intake.

Terrestrial Resources

Current License Requirements

- Manage the Bennett Meadow Wildlife Management Area for the compatible use of the land for agricultural and wildlife management purposes.

Recreation Resources

Current License Requirements

- Operate and maintain four parks and other access areas at the project; facilities include two hunting areas, two campgrounds with 30 campsites and one group camp, 20 trails (32 miles of trail), and a winter sport area.

3.5 ALTERNATIVES TO THE PROPOSED ACTION

Commission staff will consider and assess all alternative recommendations for operational or facility modifications, as well as PM&E measures identified by the Commission, the agencies, Indian tribes, NGOs, and the public.

3.6 ALTERNATIVES CONSIDERED BUT ELIMINATED FROM DETAILED STUDY

At present, we propose to eliminate the following alternatives from detailed study in the EIS.

3.6.1 Federal Government Takeover

In accordance with § 16.14 of the Commission's regulations, a federal department or agency may file a recommendation that the United States exercise its right to take over a hydroelectric power project with a license that is subject to sections 14 and 15 of the FPA.²³ We do not consider federal takeover to be a reasonable alternative. Federal takeover of the project would require congressional approval. While that fact alone would not preclude further consideration of this alternative, there is currently no evidence showing that federal takeover should be recommended to Congress. No party has suggested that federal takeover would be appropriate, and no federal agency has expressed interest in operating any of these five projects.

3.6.2 Non-power License

A non-power license is a temporary license the Commission would terminate whenever it determines that another governmental agency is authorized and willing to assume regulatory authority and supervision over the lands and facilities covered by the non-power license. At this time, no governmental agency has suggested a willingness or ability to take over any of these five projects. No party has sought a non-power license, and we have no basis for concluding that the TransCanada and FirstLight projects should

²³ 16 U.S.C. §§ 791(a)-825(r).

no longer be used to produce power. Thus, we do not consider a non-power license a reasonable alternative to relicensing the projects.

4.0 SCOPE OF CUMULATIVE EFFECTS AND SITE-SPECIFIC RESOURCE ISSUES

4.1 CUMULATIVE EFFECTS

According to the Council on Environmental Quality's regulations for implementing NEPA (40 C.F.R. 1508.7), a cumulative effect is the effect on the environment that results from the incremental effect of the action when added to other past, present and reasonably foreseeable future actions, regardless of what agency (federal or non-federal) or person undertakes such other actions. Cumulative effects can result from individually minor but collectively significant actions taking place over a period of time, including hydropower and other land and water development activities.

4.1.1 Resources that could be Cumulatively Affected

Based on information in the Pre-Application Documents and staff analysis *of the written comments submitted from agencies and other stakeholders on the SD1 document and comments from the January 2013 public scoping meetings*, we identified the following resources that may be cumulatively affected by the proposed operation and maintenance of the five Connecticut River Projects: water quality and quantity²⁴ (including power generation), fishery resources (including anadromous and catadromous fish *and fish passage*), *floodplain communities, freshwater mussels, sediment movement, recreational uses* and rare, threatened and endangered species.

4.1.2 Geographic Scope

Our geographic scope of analysis for cumulatively affected resources is defined by the physical limits or boundaries of: (1) the proposed action's effect on the resources, and (2) contributing effects from other hydropower and non-hydropower activities within the Connecticut River Basin. Because the proposed actions would affect the resources differently, the geographic scope for each resource may vary.

The five Connecticut River Projects are located contiguously on the main stem Connecticut River between RM 262 and RM 122. There are other hydroelectric projects

²⁴ *Water quantity is defined as flow magnitude, flow frequency, flow duration, flow timing, and rate of change.*

and five large storage projects in the upper Connecticut River basin. The storage projects operate to increase low flows in the summer and include First Connecticut Lake, Second Connecticut Lake, Lake Francis, Moore Reservoir and Comerford Reservoir.²⁵ While augmenting flows in the river during summer months, these storage projects have resulted in the conversion of a substantial amount of lotic (river-type) habitats in the basin to lentic (lake-type) habitats, which may have led to higher summer water temperatures and changes in the structure of fish communities. The dams have also affected sediment and large woody debris transport, which are important elements of fish habitat. Other contributors to effects on aquatic resources in the basin include operation of the Vermont Yankee nuclear plant, some urbanization, road and railroad construction, and timber harvest.

Due to the extensive seasonal storage capacity at Moore reservoir, we have identified the geographical extent of cumulative effects on water quantity and water quality to include the Connecticut River from the base of Moore dam to the mouth of the Connecticut River at Long Island Sound. We chose this geographic area to recognize the cumulative operational influences of the upstream water storage, and the operations of the five Connecticut River projects on water quantity throughout this area and subsequently on water quality that could occur downstream to mouth of the Connecticut River at Long Island Sound.

Because hydroelectric dams influence both upstream and downstream fish migration within river systems, we have identified the geographical extent of potential cumulative effects on anadromous, catadromous, and diadromous fish species to include the Connecticut River from Long Island Sound upstream to each species' historical habitat range.

We have identified the geographical extent of cumulative effects on resident fish species, freshwater mussels, and sediment movement to include the upper extent of the Wilder reservoir downstream to the Route 116 bridge in Sunderland,²⁶ Massachusetts. We chose this geographic area because the operation of the five projects could be a contributing factor to sediment movement within the river and cumulative effects on resident fisheries and freshwater mussel habitat in this area.

We have identified the geographic scope of cumulative effects on terrestrial and floodplain communities to include the 100-year floodplain (as defined by the Federal

²⁵ *Moore Reservoir and Comerford Reservoir along with the McIndoes development compose the FERC Licensed Fifteen Mile Falls Project (FERC No. 2077).*

²⁶ *The Route 116 bridge is located at the approximate upstream extent of the Holyoke Project (FERC No. 2004) impoundment.*

Emergency Management Agency) adjacent to the project-affected areas from the upstream extent of the Wilder reservoir downstream to the Route 116 bridge in Sunderland, Massachusetts. We chose this geographic area because the operation of the projects, in combination with other land uses in the Connecticut River Basin, may cumulatively affect floodplain communities adjacent to project reservoirs and downstream riverine reaches in this area.

The presence of multiple dams on the Connecticut River may cumulatively affect multi-day paddle trips. Based on our independent review and stakeholder comments, we find the geographic scope of the cumulative effects on recreation for multi-day paddling trips on the Connecticut River may extend as far upstream as Murphy Dam (RM 383) in Pittsburg, New Hampshire, where the natural riverine reaches become navigable (CRWC, 2007; American Whitewater, 2013)²⁷ and downstream to the Holyoke dam (FERC No. 2004), the most downstream dam, in Holyoke, Massachusetts.

4.1.3 Temporal Scope

The temporal scope of our cumulative effects analysis in the EIS will include a discussion of past, present, and reasonably foreseeable future actions and their effects on each resource that could be cumulatively affected. Based on the potential term of a new license, the temporal scope will look 30 to 50 years into the future, concentrating on the effect on the resources from reasonably foreseeable future actions. The historical discussion will, by necessity, be limited to the amount of available information for each resource. The quality and quantity of information, however, diminishes as we analyze resources further away in time from the present.

4.2 TRANSCANADA'S WILDER, BELLOWS FALLS AND VERNON PROJECT RESOURCE ISSUES

Environmental issues and concerns initially identified by the staff for TransCanada's Wilder, Bellows Falls, and Vernon projects are presented below. This identification of issues and concerns is not intended to be exhaustive or final, but is an initial listing of issues we have identified. For convenience, the issues have been listed

²⁷ *The Connecticut River Watershed Council (2007). The Connecticut River boating guide: Source to sea (3rd ed.). The Globe Pequot Press: Guilford, Connecticut.*

American Whitewater (2013). Retrieved on 4/11/2013 from <http://www.americanwhitewater.org/content/River/detail/id/10545>

by resource area and those issues identified by an asterisk (*) will be analyzed for both cumulative and project effects.

4.2.1 Geology and Soil Resources

- Effect of projects' operation and maintenance on river bank erosion (including the potential effects on protected species, cultural resources or the structural integrity of adjacent facilities (such as the narrow neck of land separating the Vernon impoundment from the tailwater, located to the east of the powerhouse and spillway).*
- *Effects of Project operation and maintenance on sedimentation and sediment transport and the potential affect on aquatics and shallow water habitat.**

4.2.2 Water Resources

- Effects of current and proposed project operations on water quantity.*
- Effects of project operations on water quality, particularly on dissolved oxygen and temperature (including cumulative effects from the operation of the Vermont Yankee nuclear power plant).*

4.2.3 Aquatic Resources

- Effects of project operations and maintenance (including fluctuations in water levels and flow releases) on aquatic habitat and resources in the project vicinity (e.g., resident and migratory fish populations; fish spawning, rearing, feeding, and overwintering habitats; mussels and macroinvertebrate populations and habitat).
- Effects of project facilities and operations, (including reservoir fluctuations, and generation releases) on fish migration through and within project fishways, reservoirs, and the downstream riverine corridor.*
- Effects of entrainment on fish populations.*

4.2.4 Terrestrial Resources

- Effects of project fluctuations in water levels and flow releases from the projects on riparian, wetland, and littoral vegetation community types and the spread of invasive species as a result of project operations along the shoreline of the projects.

- ***Effects of project fluctuations in water levels and flow releases from the projects on floodplain communities.****
- Effects of project operation & maintenance (O&M) activities (e.g., road and facility maintenance) and project-related recreation on wildlife habitat and wildlife.
- Effects of project O&M on riverbank integrity and shoreline erosion along the project reservoir and stream reaches and its potential effects on riparian ***and wetland*** vegetation.
- Effects of the frequency, timing, amplitude and duration of reservoir fluctuations on ***wetland-dependent birds***, waterfowl and on riparian and wetland habitats.
- Effects of project O&M and project-related recreation on bald eagles and their habitat.
- ***Effects of project operations, including reservoir and downstream flow fluctuations, on terrestrial state-listed threatened and endangered species and exemplary natural communities (e.g., cobblestone tiger beetle and calcareous riverside seep).***

4.2.5 Threatened and Endangered Species

- Effects of project operations, including reservoir and downstream flow fluctuations, on aquatic species listed as threatened or endangered under the federal Endangered Species Act (ESA) (e.g., dwarf wedgemussel).*
- Effects of project operations, including reservoir and downstream flow fluctuations, on wildlife and plant species listed as threatened or endangered under the ESA (i.e., puritan tiger beetle,²⁸ jesup's milk vetch, ***and northeastern bulrush***).*

²⁸ ***Puritan tiger beetles are located at Rainbow Beach in Northampton, MA downstream of the projects and within the Holyoke impoundment. It is reported that the species is likely extirpated within the Project area.***

- Effects of project maintenance activities on plants and wildlife species listed as threatened or endangered under the ESA (e.g., dwarf wedgemussel and Jesup's milk vetch).

4.2.6 Recreation

- Adequacy of existing recreation and public use facilities, *including car-top canoe/kayak access and hiking trails*, in meeting existing and future regional public use and river access needs.
- Effects of project operations on quality and availability of flow-dependent and *reservoir* level-dependent recreation opportunities, including boating *on the reservoirs and in the bypassed reach of the Bellows Falls Project*.
- Adequacy of structural integrity, physical capacity, and/or management methods to support recreation use at existing facilities, *including portage trails and picnic areas*.

4.2.7 Land Use

- Adequacy of existing shoreline management policies and programs to control non-project use of project lands.
- Adequacy of shoreline buffers to achieve project purposes.

4.2.8 Aesthetic Resources

- *Effects of the projects' features, operation, and maintenance on the surrounding landscape, including flows in the bypassed reach of the Bellows Falls Project.*

4.2.9 Socioeconomic Resources

- At this time we have not identified any Socioeconomic Resource issues.

4.2.10 Cultural Resources

- Effects of the projects on historic, archeological, and traditional cultural resources that may be eligible for inclusion in the National Register of Historic Places.

4.2.11 Developmental Resources

- Effects of potential operational changes on the energy and capacity benefits of the projects and effects of protection, mitigation, and enhancement measures on the cost of project power.*

4.3 FIRSTLIGHT'S TURNERS FALLS AND NORTHFIELD MOUNTAIN PUMPED STORAGE PROJECT RESOURCE ISSUES

Environmental issues and concerns initially identified by the staff for FirstLight's Turners Falls Project and Northfield Mountain Pumped Storage Project are presented below. This identification of issues and concerns is not intended to be exhaustive or final, but is an initial listing of issues we have identified. For convenience, the issues have been listed by resource area and those issues identified by an asterisk (*) will be analyzed for both cumulative and project effects.

4.3.1 Geology and Soil Resources

- Effects of project induced water level fluctuations in Turners Falls impoundment, on shoreline stability and river bank erosion, particularly where erosion might impact protected plant species, critical wildlife habitat, adjacent structures, recreational use facilities and/or private landowners within the project boundary.
- Effects of Turners Falls Project operation on river bank erosion in the bypass reach and downstream of Cabot Station.
- *Effects of Project operation and maintenance on sedimentation and sediment transport and the potential effect on aquatics and shallow water habitat, including areas such as Barton's Cove and backwater areas.*

4.3.2 Water Resources

- Effects of current and proposed project operations on water quantity (including power generation).*
- Effects of project operations on water quality, particularly on dissolved oxygen and temperature.*

4.3.3 Aquatic Resources

- Effects of project operations *and maintenance* (including fluctuations in water levels, and downstream releases) on aquatic habitat and resources in the projects' vicinity (e.g., resident and migratory fish populations; fish spawning, rearing, feeding, and overwintering habitats; mussels and macroinvertebrate populations and habitat).*
- Effects of project facilities and operations, (including reservoir fluctuations, and generation releases) on fish migration through and within project fishways, *canals, bypassed reaches*, reservoirs, and the downstream riverine corridors.*
- Effects of entrainment on fish.*

4.3.4 Terrestrial Resources

- Effects of project fluctuations in water levels and flow releases from the projects on riparian, wetland, and littoral vegetation community types and the spread of invasive species as a result of project operations along the shoreline of the projects.
- *Effects of project fluctuations in water levels and flow releases from the projects on floodplain communities.**
- Effects of project operation & maintenance (O&M) activities (e.g., road and facility maintenance) and project-related recreation on wildlife habitat and wildlife.
- Effects of project O&M on riverbank integrity and shoreline erosion along the project reservoir and stream reaches and its potential effects on riparian *and wetland* vegetation.
- Effects of the frequency, timing, amplitude and duration of reservoir fluctuations on *wetland-dependent birds*, waterfowl and on riparian and wetland habitats.
- Effects of project O&M and project-related recreation on bald eagles and their habitat.
- *Effects of project operations, including reservoir and downstream flow fluctuations, on terrestrial state-listed threatened and endangered species and exemplary natural communities (e.g., cobblestone tiger beetle).*

4.3.5 Threatened and Endangered Species

- Effects of project fluctuations and releases from the project on aquatic species listed as threatened or endangered under the federal ESA (i.e., shortnose sturgeon and dwarf wedgemussel).*
- Effects of project fluctuations and releases from the project on wildlife and plant species listed as threatened or endangered under the ESA (i.e., *puritan tiger beetle and* northeastern bulrush).*
- Effects of maintenance and use of project recreation facilities on plants and wildlife species listed as threatened or endangered under the ESA (i.e., northeastern bulrush).
- Effects of project O&M activities on plants and wildlife species listed as threatened or endangered under the ESA.

4.3.6 Recreation

- Adequacy of existing recreation and public use facilities, *including car-top canoe/kayak access and trail systems, and hours of operation*, in meeting existing and future regional public use and river access needs, *and considering a variety of public recreation activities including rock climbing*.
- Effects of project operations on quality and availability of flow-dependent and *reservoir* level-dependent recreation opportunities, including boating *in the bypassed reach of the Turners Falls Project*.
- Adequacy of structural integrity, physical capacity, and/or management methods to support recreation use at existing facilities, *including portage trails and boat ramps*.

4.3.7 Land Use

- Adequacy of existing shoreline management policies and programs to control non-project use of project lands.
- Adequacy of shoreline buffers to achieve project purposes.

4.3.8 Aesthetic Resources

- *Effects of the projects' features, operation, and maintenance on the surrounding landscape, including flows in the bypassed reach of the Turners Falls Project.*

4.3.9 Socioeconomic Resources

- At this time we have not identified any Socioeconomic Resource issues.

4.3.10 Cultural Resources

- Effects of the projects on historic, archeological, and traditional cultural resources that may be eligible for inclusion in the National Register of Historic Places.

4.3.11 Developmental Resources

- Effects of potential operational changes on the energy and capacity benefits of the projects and effects of protection, mitigation, and enhancement measures on the cost of project power.*

5.0 PROPOSED STUDIES

Depending upon the findings of studies completed by the licensees and the recommendations of the consulted entities, the licensees will consider, and may propose certain other measures to enhance environmental resources affected by the project as part of the proposed action. Initial study proposals from TransCanada and FirstLight are identified by resource area in Table 1 and detailed information on these initial study proposals can be found in the respective PADs. Further studies may need to be added to this list based on comments provided to the Commission and the licensees from agencies, Indian tribes and interested parties during the study scoping process.

Table 1. Initial Study Proposals by Project Applicant (Source: October 31, 2012 PADs)

TransCanada's Wilder, Bellows Falls and Vernon Project's	
Resource Area and Issue	Applicant's Proposed Study
Water Resources	Develop a system operations model to assist in the evaluation of project effects. 2011-2012 Water Quality report forthcoming.
Cultural Resources	Conduct future studies at Wilder and Bellows Falls, as needed, pending comments from the SHPOs on 2012 Phase 1A report.
First Light's Northfield Mountain and Turners Falls Project's	
Resource Area and Issue	Applicant's Proposed Study
Water Resources	Collect continuous and monthly <i>in-situ</i> water quality data at the Turners Falls impoundment and Northfield Mountain upper reservoir to assess the effects of Turners Falls Project operations on water quality (dissolved oxygen and temperature).
Aquatic Resources	Conduct an Instream Flow Habitat Assessment in the Turners Falls Project bypass reach and downstream of Cabot Station to assess project operational effects on the "zone of fish passage" and aquatic habitat, including an evaluation of project operations on shortnose sturgeon spawning. Using existing information, evaluate the need for improvements to existing upstream and downstream fish passage measures for American Shad and American Eel.

Terrestrial Resources

Perform field verification of National Wetland Inventory mapping in the Turners Falls Project area.

Conduct field survey of wildlife and botanical species/habitat (including rare, threatened, and endangered species and critical habitat) at Turners Falls impoundment, bypass reach, and downstream of Cabot Station.

Recreation and Land Use

Conduct a recreational use/user contact survey to establish the amount of recreation use and user opinion of recreational opportunities.

Conduct a recreation facilities inventory and assessment to evaluate all recreation project recreation facilities.

Conduct a land use classification/inventory

Cultural Resources

Conduct a Phase 1A background literature review of previous cultural resources study reports, development of archaeological sensitivity models and focused field reconnaissance studies. FirstLight has also indicated that a Phase IB archaeological survey may be warranted pending the results of consultation with the SHPOs.

Conduct a reconnaissance level architectural assessment of the project and resources within its viewshed.

Developmental Resources

Develop an operations model to evaluate system operations optimization and inflow models to assess projects operational effects on power generation and other resources.

6.0 EIS PREPARATION SCHEDULE

At this time, we anticipate the need to prepare an EIS. The draft EIS will be sent to all persons and entities on the Commission's service and mailing lists for these five projects. The EIS will include our recommendations for operating procedures, as well as PM&E measures that should be part of any license issued by the Commission. All recipients will then have 60 days to review the EIS and file written comments with the Commission. All comments on the draft EIS filed with the Commission will be considered in preparation of the final EIS.

The major milestones, including those for preparing the EIS, are as follows:

<u>Major Milestone</u>	<u>Target Date</u>
Scoping Meetings	January 2013
License Applications Filed	April 2016
Ready for Environmental Analysis Notice Issued	June 2016
Deadline for Filing Comments, Recommendations, and Agency Terms and Conditions/Prescriptions	August 2016
Draft EIS Issued	March 2017
Comments on Draft EIS Due	May 2017
Deadline for Filing Modified Agency Recommendations	June 2017
Final EIS Issued	September 2017

If Commission staff determines that there is a need for additional information or additional studies, the issuance of the Ready for Environmental Analysis notice could be delayed. If this occurs, all subsequent milestones would be delayed by the time allowed for the licensees to respond to the Commission's request. A copy of TransCanada's and FirstLight's process plans (as modified by Commission Staff) include a complete list of the relicensing milestones for the five Connecticut River projects involved in this relicensing, including those for developing the license applications, and are attached as Appendix B to this SD1.

7.0 PROPOSED EIS OUTLINE

The preliminary outline for the Connecticut River Projects' EIS is as follows:

TABLE OF CONTENTS

LIST OF APPENDICES

LIST OF FIGURES

LIST OF TABLES

ACRONYMS AND ABBREVIATIONS

EXECUTIVE SUMMARY

1.0 INTRODUCTION

1.1 Application

1.2 Purpose of Action and Need for Power

1.3 Statutory and Regulatory Requirements

1.3.1 Federal Power Act

1.3.1.1 Section 18 Fishway Prescriptions

1.3.1.2 Section 4(e) Conditions

1.3.1.3 Section 10(j) Recommendations

1.3.2 Clean Water Act

1.3.3 Endangered Species Act

1.3.4 Coastal Zone Management Act

1.3.5 National Historic Preservation Act

1.3.6 Wild and Scenic Rivers Act

1.3.7 Magnuson-Stevens Fishery Conservation and Management Act

Other statutes as applicable

1.4 Public Review and Comment

1.4.1 Scoping

1.4.2 Interventions

1.4.3 Comments on the Application

1.4.4 Comments on Draft EIS

2.0 PROPOSED ACTION AND ALTERNATIVES

2.1 No-action Alternative

2.1.1 Existing Project Facilities

2.1.2 Project Safety

2.1.3 Existing Project Operation

2.1.4 Existing Environmental Measures

2.2 Applicant's Proposal

2.2.1 Proposed Project Facilities

2.2.2 Proposed Project Operation

2.2.3 Proposed Environmental Measures

- 2.2.4 Modifications to Applicant’s Proposal—Mandatory Conditions
- 2.3 Staff Alternative
- 2.4 Staff Alternative with Mandatory Conditions
- 2.5 Other Alternatives (as appropriate)
- 2.6 Alternatives Considered but Eliminated from Detailed Study
 - 2.6.1 Federal Government Takeover of the Project
 - 2.6.2 Issuing a Nonpower License
- 3.0 ENVIRONMENTAL ANALYSIS
 - 3.1 General Description of the River Basin
 - 3.2 Scope of Cumulative Effects Analysis
 - 3.2.1 Geographic Scope
 - 3.2.2 Temporal Scope
 - 3.3 Proposed Action and Action Alternatives
 - 3.3.1 Geologic and Soil Resources
 - 3.3.2 Aquatic Resources
 - 3.3.3 Terrestrial Resources
 - 3.3.4 Threatened and Endangered Species
 - 3.3.5 Recreation and Land Use
 - 3.3.6 Cultural Resources
 - 3.3.7 Aesthetic Resources
 - 3.4 No-action Alternative
- 4.0 DEVELOPMENTAL ANALYSIS
 - 4.1 Power and Economic Benefits of the Project
 - 4.2 Comparison of Alternatives
 - 4.3 Cost of Environmental Measures
 - 4.4 Air Quality (as needed)
- 5.0 CONCLUSIONS AND RECOMMENDATIONS
 - 5.1 Comparison of Alternatives
 - 5.2 Comprehensive Development and Recommended Alternative
 - 5.3 Unavoidable Adverse Effects
 - 5.4 Recommendations of Fish and Wildlife Agencies
 - 5.5 Consistency with Comprehensive Plans
- 6.0 LITERATURE CITED
- 7.0 LIST OF PREPARERS
- 8.0 LIST OF RECIPIENTS

APPENDICES

A—License Conditions Recommended by Staff

B—Response to Comments on the Draft Environmental Impact Statement

8.0 COMPREHENSIVE PLANS

Section 10(a)(2) of the FPA, 16 U.S.C. section 803(a)(2)(A), requires the Commission to consider the extent to which a project is consistent with federal and state comprehensive plans for improving, developing, or conserving a waterway or waterways affected by a project. The staff has initially identified the plans listed below that may be relevant to the projects. Agencies are requested to review this list and inform the Commission staff of any changes. If there are other comprehensive plans that should be considered for this list that are not on file with the Commission, or if there are more recent versions of the plans already listed, they can be filed for consideration with the Commission according to 18 CFR 2.19 of the Commission's regulations. Please follow the instructions for filing a plan at <http://www.ferc.gov/industries/hydropower/gen-info/licensing/complan.pdf>.

The following is a list of comprehensive plans currently on file with the Commission that may be relevant to the TransCanada and/or FirstLight projects.

Massachusetts

Atlantic States Marine Fisheries Commission. 1995. Interstate fishery management plan for Atlantic striped bass. (Report No. 24). March 1995.

Atlantic States Marine Fisheries Commission. 1998. Amendment 1 to the Interstate Fishery Management Plan for Atlantic sturgeon (*Acipenser oxyrinchus oxyrinchus*). (Report No. 31). July 1998.

Atlantic States Marine Fisheries Commission. 1998. Interstate fishery management plan for Atlantic striped bass. (Report No. 34). January 1998.

Atlantic States Marine Fisheries Commission. 1999. Amendment 1 to the Interstate Fishery Management Plan for shad and river herring. (Report No. 35). April 1999.

Atlantic States Marine Fisheries Commission. 2000. Technical Addendum 1 to Amendment 1 of the Interstate Fishery Management Plan for shad and river herring. February 9, 2000.

Atlantic States Marine Fisheries Commission. 2009. Amendment 2 to the Interstate Fishery Management Plan for shad and river herring, Arlington, Virginia. May 2009.

Atlantic States Marine Fisheries Commission. 2010. Amendment 3 to the Interstate Fishery Management Plan for shad and river herring, Arlington, Virginia. February 2010.

Atlantic States Marine Fisheries Commission. 2000. Interstate Fishery Management Plan for American eel (*Anguilla rostrata*). (Report No. 36). April 2000.

Connecticut River Atlantic Salmon Commission. 1992. A management plan for American shad in the Connecticut River Basin. Sunderland, Massachusetts. February 1992.

Connecticut River Atlantic Salmon Commission. 1998. Strategic plan for the restoration of Atlantic salmon in the Connecticut River. Sunderland, Massachusetts. July 1998. 106 pp.

Massachusetts Department of Environmental Quality Engineering. 1983. Connecticut River Basin water quality management plan. Westborough, Massachusetts. June 1983. 95 pp.

Massachusetts Executive Office of Energy and Environmental Affairs. Statewide Comprehensive Outdoor Recreation Plan (SCORP): Massachusetts Outdoor 2006. Boston, Massachusetts.

National Marine Fisheries Service. 1998. Final Amendment #11 to the Northeast Multi-species Fishery Management Plan; Amendment #9 to the Atlantic sea scallop Fishery Management Plan; Amendment #1 to the monkfish Fishery Management Plan; Amendment #1 to the Atlantic salmon Fishery Management Plan; and Components of the proposed Atlantic herring Fishery Management Plan for Essential Fish Habitat. Volume 1. October 7, 1998.

National Marine Fisheries Service. 1998. Final Recovery Plan for the shortnose sturgeon (*Acipenser brevirostrum*). Prepared by the Shortnose Sturgeon Recovery Team for the National Marine Fisheries Service, Silver Spring, Maryland. December 1998.

National Park Service. The Nationwide Rivers Inventory. Department of the Interior, Washington, D.C. 1993.

Technical Committee for Fisheries Management of the Connecticut River. 1981. Connecticut River Basin fish passage, flow, and habitat alteration considerations in relation to anadromous fish restoration. Hadley, Massachusetts. October 1981.

U.S. Fish and Wildlife Service. 1989. Atlantic salmon restoration in New England: Final environmental impact statement 1989-2021. Department of the Interior, Newton Corner, Massachusetts. May 1989.

U.S. Fish and Wildlife Service. 1995. Silvio O. Conte National Fish and Wildlife Refuge final action plan and environmental impact statement. Department of the Interior, Turners Falls, Massachusetts. October 1995.

U.S. Fish and Wildlife Service. Canadian Wildlife Service. 1986. North American waterfowl management plan. Department of the Interior. Environment Canada. May 1986.

New Hampshire

Atlantic States Marine Fisheries Commission. 1998. Amendment 1 to the Interstate Fishery Management Plan for Atlantic sturgeon (*Acipenser oxyrinchus oxyrinchus*). (Report No. 31). July 1998.

Atlantic States Marine Fisheries Commission. 1999. Amendment 1 to the Interstate Fishery Management Plan for shad and river herring. (Report No. 35). April 1999.

Atlantic States Marine Fisheries Commission. 2000. Technical Addendum 1 to Amendment 1 of the Interstate Fishery Management Plan for shad and river herring. February 9, 2000.

Atlantic States Marine Fisheries Commission. 2009. Amendment 2 to the Interstate Fishery Management Plan for shad and river herring, Arlington, Virginia. May 2009.

Atlantic States Marine Fisheries Commission. 2010. Amendment 3 to the Interstate Fishery Management Plan for shad and river herring, Arlington, Virginia. February 2010.

Atlantic States Marine Fisheries Commission. 1998. Interstate fishery management plan for Atlantic striped bass. (Report No. 34). January 1998.

Atlantic States Marine Fisheries Commission. 2000. Interstate Fishery Management Plan for American eel (*Anguilla rostrata*). (Report No. 36). April 2000.

Atlantic States Marine Fisheries Commission. 2008. Addendum II to the Fishery Management Plan for American Eel. Arlington, Virginia. October 23, 2008. Pages 1-7.

Connecticut River Atlantic Salmon Commission. 1992. A management plan for American shad in the Connecticut River Basin. Sunderland, Massachusetts. February 1992.

Connecticut River Joint Commission. New Hampshire Department of Environmental Services. 1997. Connecticut River corridor management plan. Charlestown, New Hampshire. Concord, New Hampshire. May 1997.

Connecticut River Joint Commission. New Hampshire Department of Environmental Services. Connecticut River corridor management plan: 2008 Update to the Water Resources Chapter: (a) Headwaters Region; (b) Upper Valley Region; (c) Wantastiquet Region; (d) Riverbend Region; and (e) Mt. Ascutney Region. Charlestown, New Hampshire. Concord, New Hampshire.

Connecticut River Joint Commission. New Hampshire Department of Environmental Services. Connecticut River corridor management plan: 2009 Update to the Recreation Plan: (a) Headwaters Region; (b) Upper Valley Region; (c) Wantastiquet Region; (d) Riverbend Region; and (e) Mt. Ascutney Region. Concord, New Hampshire.

National Marine Fisheries Service. 1998. Final Amendment #11 to the Northeast Multi-species Fishery Management Plan; Amendment #9 to the Atlantic sea scallop Fishery Management Plan; Amendment #1 to the monkfish Fishery Management Plan; Amendment #1 to the Atlantic salmon Fishery Management Plan; and Components of the proposed Atlantic herring Fishery Management Plan for Essential Fish Habitat. Volume 1. October 7, 1998.

National Marine Fisheries Service. 1998. Final Recovery Plan for the shortnose sturgeon (*Acipenser brevirostrum*). Prepared by the Shortnose Sturgeon Recovery Team for the National Marine Fisheries Service, Silver Spring, Maryland. December 1998.

National Park Service. The Nationwide Rivers Inventory. Department of the Interior, Washington, D.C. 1993.

New Hampshire Office of State Planning. 1977. Wild, scenic, & recreational rivers for New Hampshire. Concord, New Hampshire. June 1977. 63 pp.

New Hampshire Office of State Planning. 1989. New Hampshire wetlands priority conservation plan. Concord, New Hampshire. 95 pp.

New Hampshire Office of Energy and Planning. New Hampshire Statewide Comprehensive Outdoor Recreation Plan (SCORP): 2008-2013. Concord, New Hampshire. December 2007.

New Hampshire Office of State Planning. 1991. Public access plan for New Hampshire's lakes, ponds, and rivers. Concord, New Hampshire. November 1991. 65 pp.

State of New Hampshire. 1991. New Hampshire rivers management and protection program [as compiled from NH RSA Ch. 483, HB 1432-FN (1990) and HB 674-FN (1991)]. Concord, New Hampshire. 19 pp.

State of New Hampshire. 1992. Act designating segments of the Connecticut River for New Hampshire's rivers management and protection program. Concord, New Hampshire. May 15, 1992. 7 pp.

U.S. Fish and Wildlife Service. 1989. Atlantic salmon restoration in New England: Final environmental impact statement 1989-2021. Department of the Interior, Newton Corner, Massachusetts. May 1989.

U.S. Fish and Wildlife Service. Undated. Fisheries USA: the recreational fisheries policy of the U.S. Fish and Wildlife Service. Washington, D.C.

U.S. Fish and Wildlife Service. Canadian Wildlife Service. 1986. North American waterfowl management plan. Department of the Interior. Environment Canada. May 1986.

Vermont

Atlantic States Marine Fisheries Commission. 2000. Interstate Fishery Management Plan for American eel (*Anguilla rostrata*). (Report No. 36). April 2000.

Connecticut River Atlantic Salmon Commission. 1992. A management plan for American shad in the Connecticut River Basin. Sunderland, Massachusetts. February 1992.

Connecticut River Atlantic Salmon Commission. 1998. Strategic plan for the restoration of Atlantic salmon to the Connecticut River. Sunderland, Massachusetts. July 1998. 105 pp.

Connecticut River Joint Commission. New Hampshire Department of Environmental Services. 1997. Connecticut River corridor management plan. Charlestown, New Hampshire. Concord, New Hampshire. May 1997.

Connecticut River Joint Commission. New Hampshire Department of Environmental Services. 1997. Connecticut River corridor management plan: 2008 Update to the Water Resources Chapter: (a) Headwaters Region; (b) Upper Valley Region; (c) Wantastiquet Region; (d) Riverbend Region; and (e) Mt. Ascutney Region. Charlestown, New Hampshire. Concord, New Hampshire.

Connecticut River Joint Commission. New Hampshire Department of Environmental Services. 1997. Connecticut River corridor management plan: 2009 Update to the Connecticut River Recreation Plan: (a) Headwaters Region; (b) Upper Valley Region; (c) Wantastiquet Region; (d) Riverbend Region; and (e) Mt. Ascutney Region. Charlestown, New Hampshire. Concord, New Hampshire.

National Marine Fisheries Service. 1998. Final Amendment #11 to the Northeast Multi-species Fishery Management Plan; Amendment #9 to the Atlantic sea scallop Fishery Management Plan; Amendment #1 to the monkfish Fishery Management Plan; Amendment #1 to the Atlantic salmon Fishery Management Plan; and Components of the proposed Atlantic herring Fishery Management Plan for Essential Fish Habitat. Volume 1. October 7, 1998.

National Park Service. The Nationwide Rivers Inventory. Department of the Interior, Washington, D.C. 1993.

U.S. Fish and Wildlife Service. Undated. Fisheries USA: the recreational fisheries policy of the U.S. Fish and Wildlife Service. Washington, D.C.

U.S. Fish and Wildlife Service. Canadian Wildlife Service. 1986. North American waterfowl management plan. Department of the Interior. Environment Canada. May 1986.

Vermont Agency of Environmental Conservation. 2002. White River Basin plan. Waterbury, Vermont. November 2002.

Vermont Agency of Environmental Conservation. 1986. Vermont Rivers Study. Waterbury, Vermont. 236 pp.

Vermont Agency of Natural Resources. 1988. Hydropower in Vermont: an assessment of environmental problems and opportunities. Waterbury, Vermont. May 1988.

Vermont Agency of Natural Resources. 1988. Wetlands component of the 1988 Vermont recreation plan. Waterbury, Vermont. July 1988. 43 pp.

Vermont Agency of Natural Resources. 1990. Vermont's lake trout management plan for inland waters. Waterbury, Vermont. May 1990. St. Johnsbury, Vermont. July 1990. 50 pp.

Vermont Agency of Natural Resources. 1986. The waterfalls, cascades, and gorges of Vermont. Waterbury, Vermont. May 1986. 320 pp.

Vermont Department of Environmental Conservation. 2008. Basin 11 management plan: West River, Williams River, Saxtons River. Waterbury, Vermont. June 2008.

Vermont Department of Fish and Wildlife. 1993. The Vermont plan for brook, brown, and rainbow trout. Waterbury, Vermont. September 1993.

Vermont Department of Forests, Parks and Recreation. Vermont State Comprehensive Outdoor Recreation Plan (SCORP): 2005-2009. Waterbury, Vermont. July 2005.

Vermont Natural Heritage Program. New Hampshire Natural Heritage Inventory. 1988. Natural shores of the Connecticut River: Windham County, Vermont, and Cheshire County, New Hampshire. December 1988.

9.0 MAILING LIST

The list below is the Commission's official mailing list for the TransCanada and FirstLight projects included in this scoping document. If you want to receive future mailings for this proceeding and are not included in the list below, please send your request by email to efiling@ferc.gov or by mail to: Kimberly D. Bose, Secretary, Federal Energy Regulatory Commission, 888 First Street, N.E., Room 1A, Washington, DC 20426. All written and emailed requests to be added to the mailing list must clearly identify the following on the first page as appropriate: **Wilder Project No. 1892-026, Bellows Falls Project No. 1855-045, Vernon Project No. 1904-073, Turners Falls Project No. 1889-081) and/or Northfield Mountain Pumped Storage Project No. 2485-063.** You may use the same method if requesting removal from the mailing list.

Register online at <http://www.ferc.gov/esubscribenow.htm> to be notified via email of new filings and issuances related to this or other pending projects. For assistance, please contact FERC Online Support at FERCOnlineSupport@ferc.gov or toll free at 1-866-208-3676, or for TTY, (202) 502-8659.

Mailing List

Wilder Project Mailing List

AMELIA EMERSON 6 BROCK FARM RD PIERMONT, NH 03779	RALPH & CLAUDIA GIBSON 33 E. WILDER ROAD WEST LEBANON, NH 03784
ANN MARIE KRAYBILL 143 PASSUMPSIC AVE. PO BOX 829 WILDER, VT 05088-0829	Steven Frias Legal Counsel Rhode Island Public Utilities Commission 89 Jefferson Blvd Warwick, RI 02888-1046
Kenneth D. Kimball Director of Research Appalachian Mountain Club Route 16 Gorham, NH 03581	DAVID CLEM TRUSTEE RIVERDANCE LANDING REALTY TRUST PO BOX 5305 W LEBANON, NH 03784
FELICIA HINDS ARNT BJORKMAN III P O BOX 137 WILDER, VT 05088-0137	KATHERINE J LUCIER ROBERT H LUCIER 1070 ROUTE 10 ORFORD, NH 03777

DIRECTOR Atlantic Salmon Federation C/O BILL TOWNSEND - MAINE COUNCIL Skowhegan, ME 04976	Roberta R Smith Supervisor ROCKINGHAM, TOWN OF Windham County Bellows Falls, VT 05101
BAYNE STEVENSON 729 RIVER RD LYME, NH 03768	JONATHAN H. ROSE ROSE REVOCABLE TRUST 1987 ELY RD NORTH THETFORD, VT 03766
Bureau of Reclamation GREAT PLAINS REGION Billings, MT	RUDY JACOBSON RUSSELL & MARY K CARSON PO BOX 116 NEWBURY, VT 05051
CARL W SCHMIDT PO BOX C ORFORD, NH 03777	AGENCY OF TRANSPORTATION STATE OF VERMONT NATIONAL LIFE BLDG DRAWER 33 MONTPELIER, VT 05633
CHARLES A HALLETT JR 534 RIVER RD LYME, NH 03768	AGENCY OF NATURAL RESOURCES STATE OF VERMONT 1 NATIONAL LIFE DR, MAIN 2 MONTPELIER, VT 05620
CONNECTICUT RIVER VALLEY FLOOD COMM. P.O. Box 511 Greenfield, MA 01301	PATRICIA L RICHARD STEVEN L RICHARD P O BOX 577 WILDER, VT 05088-0577
Dartmouth Outdoor Programs Dan Nelson PO Box 95 Hanover, NH 03755	SHIRLEY A STOCKING (LIFE ESTATE) STEVEN S & ARLINE C STOCKING 143 BIRCH MEADOW RD FAIRLEE, VT 05045
ELLEA L. ARNOLD DARTMOUTH COLLEGE C/O REAL ESTATE OFFICE PO BOX 5188 HANOVER, NH 03755-5188	SUSAN ELIZABETH HARDY 122 KENDALL STATION RD NORWICH, VT 05055
DAVID & JENKINS KOTZ TRUSTEE 133+137 RIVER RD LYME, NH 03768	SUSAN J MACKENZIE 101 RIVER RD LYME, NH 03768

DAVID C & SHIRLEY I. MONTGOMERY 46 RIVER RD. PO BOX 190 HANOVER, NH 03755-0190	THOMAS C & OFFICER C/O CHARLES & BEATRICE OFFICER 26 OCCOM RDG HANOVER, NH 03755
DAVID R & SIMPSON 38 CAMBRIDGE ST LONDON, ENGLAND SW1V4QH	THOMAS R WOODS 261 PASSUMPSIC AVE. P O BOX 1165 WILDER, VT 05088-1165
DENNIS L & THEDA A FARMER PO BOX 341 FAIRLEE, VT 05045	Laurent J. Veilleux TOWN OF FAIRLEE PO BOX 95 FAIRLEE, VT 05045
Brad Simpkins Division of Forests and Lands (NH) P.O. Box 1856 Concord, NH 03302-1856	PETER KULBACKI TOWN OF HANOVER PO BOX 483 HANOVER, NH 03755-0483
NH Division of Historical Resources Edena Feighner 19 Pillsbury St., Second Floor Concord, NH 03301	WASTEWATER DEPARTMENT TOWN OF HARTFORD 171 BRIDGE STREET WHITE RIVER JCT, VT 05001-1920
LEDYARD NATIONAL BANK, CO- TRUSTEE ELEANOR M MUDGE TRUSTEE 376 RIVER RD LYME, NH 03768	Michael E Hachey Director Eastern Commercial TransCanada Hydro Northeast, Inc. 110 Turnpike Road, Suite 203 Westborough, MA 01581
ELLEN F BLAKE PO BOX 49 NORWICH, VT 05055-0049	Tyler Putnam 9 Garden Way Johnson City, TN 37604
Federal Energy Regulatory Commission CHICAGO REGIONAL OFFICE - FEDERAL BLDG. 230 S Dearborn St Ste 3130 Chicago, IL 60604-1695	Christine A Godfrey U.S. Army Corps of Engineers N E Div / Regulatory 696 Virginia Rd Concord, MA 01742-2718
Regional Engineer Federal Energy Regulatory Commission New York Regional Office 19 W 34th St Rm 400 New York, NY 10001-3006	MICHAEL ADAMS U.S. Army Corps of Engineers Suite 205 8 Carmichael St Essex Junction, VT 05452-3170

ERNST KLING FIONA PATER 37 TOWN RD 100 ORFORD, NH 03777	Commander U.S. Army Corps of Engineers North Atlantic Division 26 Federal Plz, # 2109 New York, NY 10278-0090
YVONNE MEFFERD FRANK H MEFFERD 317 COMMANCHE RD MONTGOMERY, TX 77316	Chief of Engineers U.S. Army Corps of Engineers Office of the Chief of Engineers 20 Massachusetts Ave NW Washington, DC 20314-0001
GERALD CATTERAL 520 RT 10 PIERMONT, NH 03779	Director U.S. Army Corps of Engineers MISSOURI RIVER DIVISION 1616 Capitol Ave, Ste 9000 Omaha, NE 68102-4926
SHAWN CARROLL GILLIAN TYLER, 327 RIVER RD LYME, NH 03768	Office of the Solicitor U.S. Bureau of Indian Affairs 1849 C Street, NW, MS 6557 Washington, DC 20240
PATSY BLAISDELL-SCHWAB HANS SCHWAB 6 KENDALL STATION RD NORWICH, VT 05055	Keith S. Bluecloud Natural Resources Branch Manag U.S. Bureau of Indian Affairs 545 Marriott Drive Suite 700 Nashville, TN 37214
TERESA HARDWICK HARRY KENDRICK 243 PASSUMPSIC AVE. P O BOX 524 WILDER, VT 05088-0524	U.S. Bureau of Indian Affairs ABERDEEN AREA OFFICE 115 4th Ave SE Aberdeen, SD 57401-4310
Hubbard LLC C/O CURA PROPERTY MGMT CO PO BOX 946 WHITE RIVER JCT, VT 05001-0946	John Bryant Kennedy U.S. Bureau of Land Management 2351 College Station RD Athens, GA 30605-3619
GLEN FARM, INC 63 RIVER ROAD PIERMONT, NH 03779	Field Manager U.S. Bureau of Land Management 626 E Wisconsin Ave Ste 200 Milwaukee, WI 53202-4618
JARED S STOLPER 609 RIVER RD LYME, NH 03768	U.S. Bureau of Land Management WYOMING STATE OFFICE Cheyenne, WY 82009

JASON A DENSMORE III 20 RIVER RD HANOVER, NH 03755-6612	Commanding Officer MSO PORTLAND U.S. Coast Guard 259 High St South Portland, ME 04106
JEFFREY P - TRUSTEES HASTINGS 114 LYME RD HANOVER, NH 03755	Andrew Tittler Attorney-Advisor U.S. Department of Interior One Gateway Center, Suite 612 Newton, MA 02458
JENELL HOSPITALITY LLC 305 N MAIN ST WEST LEBANON, NH 03784	Virginia Reddick U.S. Department of Interior Office of Environmental Affairs 1849 C St. NW, Room 2340 MIB Washington, DC 20240
J-F ENTERPRISES INC 120 LYME RD HANOVER, NH 03755	DIRECTOR U.S. Department of Interior 1849 C STREET, N.W., MS 2430 OFFICE OF ENVIRON. POLICY & COMPLIANCE Washington, DC 20240
JOANNA E - TRUSTEE RAPF 96 LYME RD HANOVER, NH 73069-4405	U.S. Department of Interior OFFICE OF ENVIRONMENTAL AFFAIRS 1849 C St NW # ROOM2353 Washington, DC 20240-0001
JOHN F CREAGH 112 LYME RD HANOVER, NH 03755	Robert F Stewart Director U.S. Department of Interior Denver Federal Center Denver, CO 80225
JOHN J BOTTE 21 BLANCHARD ST SMITHTOWN, NY 11787	Regional Environmental Officer Officer U.S. Department of Interior 408 Atlantic Ave Ste 142 Boston, MA 02110
JOHN J & LOIS MASOR BEATTY 17 FARAWAY LANE WEST LEBANON, NH 03784	Ralph Abele U.S. Environmental Protection Agency 5 Post Office Square, Suite 100 MailCode OEP06-02 Boston, MA 02109

PORTIA L FITZHUGH JOHN J KAROL JR PO BOX 12 ORFORD, NH 03777	Director U.S. Environmental Protection Agency Office of Ecosystem Protection; Water Quality Branch 5 Post Office Sq, Ste 100 Boston, MA 02109-3912
John Mudge 25 Lamphire Hill Lane Lyme, NH 03768	U.S. Environmental Protection Agency 901 N 5th St Kansas City, KS 66101-2907
J VAUGHAN JOHN SMITH 506 MOORE HILL RD NEWBURY, VT 05051	Mark Kern U.S. Environmental Protection Agency R1 5 Post Office Square, Ste 100 Boston, MA 02109-3912
JOHN STADLER 264 RIVER RD LYME, NH 03768	Regional Director U.S. Fish & Wildlife Service 300 Westgate Center Dr Northeast Regional Office Hadley, MA 01035-9587
EMILY CASSIDY JOSEPH CASSIDY 377 WATERMAN HILL NORWICH, VT 05055	John P. Warner U.S. Fish & Wildlife Service 70 Commercial Street Concord, NH 03301
DAVID C. HEWITT KATHARINE P HEWITT, TTEE 765 RIVER RD LYME, NH 03768	Kenneth Carr U.S. Fish & Wildlife Service 70 Commercial St Ste 300 Concord, NH 03301-5094
SHEILA A. TARASKA KATHLEEN E. PETERSON PO BOX 608 NORWICH, VT 05055-0608	Director, Eco. Services U.S. Fish & Wildlife Service Federal Building 203 W 2nd St Grand Island, NE 68801-5907
KEITH C & KAREN J BORGSTROM, TRUSTEES 61 RIVER RD LYME, NH 03768	Regional Director U.S. Fish & Wildlife Service Ecological Services Denver, CO 80225

PAUL KNOX KNOXLAND FARM INC. 501 PRATT ROAD BRADFORD, VT 05033	U.S. Geological Survey MASSACHUSETTS-RHODE ISLAND DIST., WRD 10 Bearfoot Rd Northborough, MA 01532-1528
PEGGY HEWES LARRY SCOTT EKOLOTT FARMS 179 SCOTT RD NEWBURY, VT 05051	Director U.S. Geological Survey 361 Commerce Way Pembroke, NH 03275-3718
JEANNE E. HOLMES LAURENCE B. HOLMES 7 RIVER EDGE RD NORWICH, VT 05055	BERNARD F SAUNDERS HONORABLE U.S. House of Representatives WASHINGTON, DC 20515
GWEN L TUSON LEONARD N MORSE P O BOX 633 WILDER, VT 05088-0633	Paul Hodes HONORABLE U.S. House of Representatives 506 Cannon WASHINGTON, DC 20515
LINDA PARADEE 9 FIRST AVENUE MONTPELIER, VT 05602	Kevin Mendik, ESQ NPS Hydro Prgm Coord U.S. National Park Service 15 State Street 10th floor Boston, MA 02109
LINWOOD G & FLORENCE B HUNTINGTON 3661 RT 5 N NEWBURY, VT 05051	U.S. National Park Service NORTH ATLANTIC REGION 15 State St Boston, MA 02109-3502
JEFF STIMSON LLC JTS PROPERTIES PO BOX 370 NO. HAVERHILL, NH 03774	Angela M Tornes U.S. National Park Service 626 E Wisconsin Ave Ste 100 Milwaukee, WI 53202-4609
MARIANNE M ALVERSON 143 RIVER RD LYME, NH 03768	Nick Chevance Regional Environmental Coord U.S. National Park Service 601 Riverfront Drive Omaha, NE 68128

MARJORIE ANNE GREEN REV TRUST 1222 US RTE 5N FAIRLEE, VT 05045	Michael Johanns Senator U.S. Senate 404 Russell Senate Office Bldg Washington, DC 20510
MARK A ISRAEL 18 OCCOM RDG HANOVER, NH 03755	Kelly Ayotte Senator U.S. Senate 144 Russell Senate Office Bldg Washington, DC 20510
MARSELIS C PARSONS III TRUSTEE 498 RIVER RD LYME, NH 03768	Patrick J Leahy Honorable U.S. Senate Washington, DC 20510
MARTIN SMIT 138 TOLL HOUSE RD NEWBURY, VT 05051	Ben Nelson Honorable U.S. Senate Washington, DC 20510
Director Massachusetts Dept. of Public Utilities Energy and Environmental Affairs One South Station Boston, MA 02110	JAMES THAXTON, SARA CARIN UPPER VALLEY LAND TRUST INC 19 BUCK ROAD HANOVER, NH 03755
MICHAEL PIETKIEWICZ, TRUSTEE 625 RIVER RD LYME, NH 03768	Steve Roy USDA Forest Service Green Mountain & Fingerlakes N.F. 231 N Main St Rutland, VT 05701-2412
NEBRASKA DEPARTMENT OF AGRICULTURE 301 Centennial Mall S Lincoln, NE 68508	ATTY.GENERAL Vermont Attorney General's Office 109 State St Montpelier, VT 05602-2700
Director Nebraska Department of Natural Resources Lincoln, NE 68508	Mark Sciarotta Vermont Attorney General's Office 109 State St Montpelier, VT 05609-0001

DIRECTOR NEBRASKA DEPT. OF ENVIRONMENTAL QUALITY Lincoln, NE 68508	Coordinator Vermont Department of Fish & Wildlife District Office Coordinator 1000 Mineral Street, Suite 302 Springfield, VT 05156-3168
Frank Albrecht Asst Div. Admin. Nebraska Game and Parks Commission 2200 N 33rd St Lincoln, NE 68503-1417	Roderick Wentworth Specialist Vermont Department of Fish & Wildlife 103 S Main St Bldg 10S Waterbury, VT 05676
ATTY.GENERAL NEBRASKA OFFICE OF THE ATTORNEY GEN. STATE CAPITOL LINCOLN, NE 68509	Hans E Mertens Director of Engineerg Services Vermont Department of Public Service 112 State Street Montpelier, VT 05620
NEBRASKA STATE HISTORICAL SOCIETY, THE 1500 R St Lincoln, NE 68508-1651	FERC Contact Vermont Department of Public Service 112 STATE STREET - CITY CENTER BUILDING, 3RD FLOOR Montpelier, VT 05620-0001
Harry T Stewart Director New Hampshire Department of Environmental Services 29 Hazen Dr Concord, NH 03301-6503	Vermont Dept. of Forests, Parks & Recreation RECREATION - WATERBURY COMPLEX, 10 SOUTH 103 S Main St Waterbury, VT 05676-1531
Glen Normandeau Executive Dir. New Hampshire Department of Fish and Game 11 Hazen Dr Concord, NH 03301-6502	Devin A Colman Historic Preservation Review Vermont State Historic Preservation Office 1 National Life Drive Floor 6 Montpelier, VT 05620-0501
Gabe Gries New Hampshire Department of Fish and Game Region 4 15 Ash Brook Ct Keene, NH 03431	JOHN M PRATT WALPOLE, TOWN OF OFFICE OF SELECTMEN P.O. Box 729 Walpole, NH 03608

<p>Legal Department NEW HAMPSHIRE DIVISION OF HISTORICAL 19 Pillsbury St Fl 2 Concord, NH 03301-3570</p>	<p>LINDA GOODRICH WAYNE GOODRICH 8 PUSHEE FALLS LANE LYME, NH 03768</p>
<p>State of New Hampshire Attorney General New Hampshire Office of Attorney General 33 Capitol St Concord, NH 03301-6310</p>	<p>VIOLET H WILMOTT WAYNE W WILMOTT SR, 50 RIVER RD LYME, NH 03768</p>
<p>Director New Hampshire Office of Planning & Energy 107 Pleasant St, Johnson Hall Concord, NH 03301</p>	<p>Mark Prout WHITE MOUNTAIN NATIONAL FOREST 71 White Mountain Dr U.S. Forest Service Campton, NH 03223</p>
<p>Debra A Howland New Hampshire Public Utilities Commission 21 S. Fruit Street Suite 10 Concord, NH 03301-2429</p>	<p>C/O LYME PROPERTIES XYZ DAIRY LLC PO BOX 5305 WEST LEBANON, NH 03784</p>
<p>Secretary New Hampshire Public Utilities Commission 21 S Fruit St Ste 10 Concord, NH 03301-2428</p>	<p>ELIZABETH SUNDE PAUL SUNDE P O BOX 430 WILDER, VT 05088-0430</p>
<p>JAMES W GALLAGHER CHIEF ENGINEER New Hampshire Water Resources Board 29 Hazen Dr Concord, NH 03301-6504</p>	<p>PAULA TENSEN 53 SMITH MTN. RD. LYME, NH 03768</p>
<p>Regional Director NOAA National Marine Fisheries Service Northeast Regional Office-DOC/NOAA 55 Great Republic Dr Gloucester, MA 01930-2298</p>	<p>PHILIP W SARGENT P O BOX 818 WILDER, VT 05088-0818</p>

<p>Prescott H Brownell, SR Southeast Region FERC Coordina NOAA National Marine Fisheries Service 219 Fort Johnson Road Charleston, SC 29412</p>	<p>Andrew Raddant Regional Environmental Officer Office of Environmental Policy and Compliance (USDOJ) 408 Atlantic Ave. Room 142 Boston, MA 02210-3334</p>
<p>HARVEY SCUDDER PRESIDENT NORTHEAST CTR. FOR SOCIAL ISSUE STUDIES Brattleboro, VT 05301</p>	<p>NH DES Owen David PO Box 95 Concord, NH 03301</p>
<p>David Tomey Northeast National Marine Fisheries Service 1 Blackburn Dr Gloucester, MA 01930-2298</p>	<p>KIMBERLY HAYDEN CARROLL, GEORGE & PRATT 64 N Main St # 66 Rutland, Vermont 05701-3249</p>
<p>MCINTYRE TRUSTEE, MARGARET JEAN O. ROSS MCINTYRE TRUSTEE 34 LAMPHIRE HILL LN LYME, NH 03768</p>	<p>Steven Frias Legal Counsel Rhode Island Public Utilities Commission 89 Jefferson Blvd Warwick, Rhode Island 02888-1046</p>
<p>Richard Roos-Collins Director, Legal Services Natural Heritage Institute 2140 Shattuck Avenue, Ste. 801 Berkeley, California 94704-1229</p>	<p>Atlantic Salmon Federation DIRECTOR PO Box 467 Skowhegan, Maine 04976-0467</p>
<p>John Ragonese FERC License Mgr TransCanada Power Marketing Ltd. 4 Park Street, Suite 402 Concord, New Hampshire 03301</p>	<p>Dan Nelson PO Box 95 Hanover, New Hampshire 03755</p>
<p>Rachel Ruppel Connecticut River Joint Commissions 10 Water St, Suite 225 Lebanon, New Hampshire 03766</p>	<p>Felicia Hinds PO Box 137 Wilder, Vermont 05088-0137</p>

<p>John Mudge 25 Lamphire Hill Lane Lyme, New Hampshire 03768</p>	<p>Paul Knox 501 Pratt Road Bradford, Vermont 05033</p>
<p>Brandon Taylor 22 Union St. Concord, Massachusetts 01742</p>	<p>Doug Harris Narragansett Tribe 4375 B South County Trail Charlestown, Rhode Island 02813</p>
<p>Matthew Thomas Narragansett Tribe 4375 B South County Trail Charlestown, Rhode Island 02813</p>	<p>Christina St. Louis Review & Compliance New Hampshire Department of Historical Resources 19 Pillsbury St., 2nd Floor Concord, New Hampshire 03301</p>
<p>Glen Normandeau Executive Dir. New Hampshire Dept of Fish and Game 11 Hazen Dr Concord, New Hampshire 03301</p>	<p>Gregg Comstock Supervisor, NH Dept of Environ 29 Hazen Drive, PO Box 95 Concord, New Hampshire 03302-0095</p>
<p>Edna M Feighner Review and Compliance Coordinator NH Division of Historical Resources 19 Pillsbury Street, Second Floor Concord, New Hampshire 03301</p>	<p>Kathryn Kennedy Applied River Scientist The Nature Conservancy 25 Main Street, Suite 220 Northampton, Massachusetts 01060</p>
<p>Brian Kunz President Pine Park Trustees P.O. Box 9 Hanover, New Hampshire 03755</p>	<p>Peter Gregory Executive Director 128 King Farm Road Woodstock, Vermont 05091</p>
<p>Joseph P Graveline, President The Nolumbeka Project 88 Columbus Avenue Greenfield, Massachusetts 01301</p>	<p>Jennifer L McCarthy Chief, Regulatory Div. U.S. Army Corps of Engineers New England District 696 Virginia Rd Concord, Massachusetts 01742-2751</p>

Bellows Falls Project Mailing List

SANDRA A GASPARDINO ALAN A GASPARDINO 4 DUFFY STREET NORTH WALPOLE, NH 03609	PATRICIA G BENNETT 9 PARK AVE #506 HULL, MA 02045
Kenneth D. Kimball Director of Research Appalachian Mountain Club Route 16 Gorham, NH 03581	PETER A POWERS 6 DUFFY STREET NORTH WALPOLE, NH 03609
DIRECTOR Atlantic Salmon Federation C/O BILL TOWNSEND - MAINE COUNCIL Skowhegan, ME 04976	PHYLLIS K AARON 502 ROUTE 100 SOUTH JAMAICA, VT 05343
BARBARA BOYLAN 14 SPENCER DRIVE BELLOWS FALLS, VT 05101	STEPHEN S. AUKUDA PROCTODYNIA LLC PO BOX 5305 W LEBANON, VT 03784
STEWART READ BELLOWS FALLS HISTORICAL SOCIETY PO BOX 466 BELLOWS FALLS, VT 05101	Roger A Hunt Director Quinebaug Associates, LLC 370 Main St, Ste 800 Worcester, MA 01608-1741
ROBERT WHEELER BELLOWS FALLS VILLAGE CORP PO BOX 370 BELLOWS FALLS, VT 05101	R STEVENS HUGH 1 NATIONAL LIFE DR, MAIN 2 MONTPELIER, VT 05620
BOISEVERT & W.TOWNSEND D.M 1823 US RT 5 NORTH WINDSOR, VT 05089	RAYMOND FOTION 1787 US RTE 5 SOUTH WINDSOR, VT 05089
ANTHONY & PATRICIA DANIELS BOW VT LLC 321 DAKE HILL RD WEATHERSFIELD, VT 05156-9513	Steven Frias Legal Counsel Rhode Island Public Utilities Commission 89 Jefferson Blvd Warwick, RI 02888-1046

JEROME ROBERT BRESLEND BRENDA T BRESLEND 9 PINE STREET NORTH WALPOLE, NH 03609	Harvey Reiter Rhode Island Public Utilities Commission 89 Jefferson Blvd Warwick, RI 02888-1046
SIMEON BRUNER CAMBRIDGE DEVELOPMENT CORPORATION BRUNER, COTT, & ASSOCIATES, INC. 130 Prospect St Cambridge, MA 02139-1844	RICHARD E HOWARD 1010 RTE 5 SPRINGFIELD, VT 05156
CITY OF CLAREMONT 58 OPERA HOUSE SQ CLAREMONT, NH 03743	Roberta R Smith Supervisor ROCKINGHAM, TOWN OF Windham County Bellows Falls, VT 05101
CONNECTICUT RIVER VALLEY FLOOD COMM. P.O. Box 511 Greenfield, MA 01301	RONALD G. FERLAND 443 RIVER ROAD CHARLESTOWN, NH 03603
NANCY M HAGBERG DAVID J HAGBERG 34 RUGG ROAD STERLING, MA 01564	ETHELYN CHASE RONALD L CHASE 53 MISSING LINK RD BELLOWS FALLS, VT 05101
DIANNE M CRAINICH PO BOX 324 CHARLESTOWN, NH 03603	DARLENE RAMSEY SHERWOOD CAMPBELL C/O GEORGE RAMSAY JR 39 CHURCH STREET NORTH WALPOLE, NH 03609
Brad Simpkins Division of Forests and Lands (NH) P.O. Box 1856 Concord, NH 03302-1856	SHIRLEY H MITCHELL ET AL TRUSTEES-HIGHTER FARM TRUST 156 LOWER LANDING ROAD CHARLESTOWN, NH 03603
DONNA M HOLZINGER REV TRUST DONNA M HOLZINGER TRUSTEE 624 OLD CONN RIVER ROAD SPRINGFIELD, VT 05156	STATE OF NH DEPT OF TRANSPORT 19 BASE HILL RD SWANZEY, NH 03446-3401

DONNA C JONES E PETER JONES 16 UPPER MEADOWS ROAD BELLOWS FALLS, VT 05101	DEPT OF FISH & WILDLIFE STATE OF VERMONT 103 SOUTH MAIN ST WATERBURY, VT 05671
NH Division of Historical Resources Edena Feighner 19 Pillsbury St., Second Floor Concord, NH 03301	RICHARD SEAMAN STUDENT CONSERVATION ASSOC. PO BOX 550 CHARLESTOWN, NH 03603
ELBERT SHAUGHNESSY 10 SPRUCE STREET NORTH WALPOLE, NH 03609	THERESA ST PIERRE 49 OAK COURT CHARLESTOWN, NH 03603
EUGENE P DION 96 CONN RIVER ROAD SPRINGFIELD, VT 05156	THOMAS W & SUSAN T HALL 24 PADDOCK ROAD SPRINGFIELD, VT 05156
F. WILLIAM & JENNIFER S LIPFERT 1349 ROUTE 12A CORNISH, NH 03745	WENDY V LILLIE THORNTON K LILLIE 74 UPPER MEADOWS RD BELLOWS FALLS, VT 05101
Regional Engineer Federal Energy Regulatory Commission New York Regional Office 19 W 34th St Rm 400 New York, NY 10001-3006	TOWN OF CHARLESTOWN 26 RAILROAD STREET PO BOX 385 CHARLESTOWN, NH 03603
FRANK A BRUNOT LIVING TRUST FRANK A BRUNOT TRUSTEE PO BOX 64 ASCUTNEY, VT 05030-0064	FRANCIS WALSH TOWN OF ROCKINGHAM PO BOX 370 BELLOWS FALLS, VT 05101
PATRICIA G BENNETT FRED D BENNETT 377 MISSING LINK RD BELLOWS FALLS, VT 05101	WHITNEY ALDRICH TOWN OF WALPOLE 34 ELMS ST. PO BOX 729 WALPOLE, NH 03608

GAIL AND EUGENE THORBURN 1883 US RTE 5 SOUTH WINDSOR, VT 05089	Michael E Hachey Director Eastern Commercial TransCanada Hydro Northeast, Inc. 110 Turnpike Road, Suite 203 Westborough, MA 01581
GARY L & CHRISTINE BULLARD 4 HERRICKS COVE RD BELLOWS FALLS, VT 05101	Kristine L Delkus Esq Deputy Gen. Counsel TransCanada Hydro Northeast, Inc. 450 1st Street SW 6th Floor Calgary, ALBERTA T2P 5H1
GILBERT & BRENDA EVANS OLD CHESHIRE TURNPIKE DREWSVILLE, NH 03604	Tyler Putnam 9 Garden Way Johnson City, TN 37604
H CLAY HAWKINS IV 295 WINDSOR RD CLAREMONT, NH 03743	Christine A Godfrey U.S. Army Corps of Engineers N E Div / Regulatory 696 Virginia Rd Concord, MA 01742-2718
MICHAEL J KNORAS TREASURER HITORMIS GUN CLUB INC 23 EAST LANE SPRINGFIELD, VT 05156	MICHAEL ADAMS U.S. Army Corps of Engineers Suite 205 8 Carmichael St Essex Junction, VT 05452-3170
Hubbard LLC 36 PUTNAM ROAD SPRINGFIELD, VT 05156	Commander U.S. Army Corps of Engineers North Atlantic Division 26 Federal Plz, # 2109 New York, NY 10278-0090
STEWART READ ISLAND CORPORATION PO BOX 142 BELLOWS FALLS, VT 05101	Office of the Solicitor U.S. Bureau of Indian Affairs 1849 C Street, NW, MS 6557 Washington, DC 20240
KIMBERLY HAYDEN ISLAND CORPORATION CARROLL, GEORGE & PRATT 64 N Main St # 66 Rutland, VERMONT 057013249	Keith S. Bluecloud Natural Resources Branch Manager U.S. Bureau of Indian Affairs 545 Marriott Drive Suite 700 Nashville, TN 37214

JUDI G DOW JAMES G JR & SIMON S JOHNSON 630 NORTHSTAR CT BOULDER, CO 80304	John Bryant Kennedy U.S. Bureau of Land Management 2351 College Station RD Athens, GA 30605-3619
JAMES JR MC CLAMMER TRUSTEE 391 RIVER RD CHARLESTOWN, NH 03603	Field Manager U.S. Bureau of Land Management 626 E Wisconsin Ave Ste 200 Milwaukee, WI 53202-4618
JARED S STOLPER 82 CHURCH STREET NORTH WALPOLE, NH 03609	U.S. Coast Guard MSO BOSTON 447 Commercial St Boston, MA 02109-1027
JENNIFER HARRIS 3 ASH STREET NORTH WALPOLE, NH 03609	Commanding Officer MSO PORTLAND U.S. Coast Guard 259 High St South Portland, ME 04106
JOHN A PARROTT 33 CENTER STREET NORTH WALPOLE, NH 03609	Regional Environmental Officer Officer U.S. Department of Interior 408 Atlantic Ave Ste 142 Boston, MA 02110
JOHN A. & CORINNE S. BOND 1809 CONN RIVER RD SPRINGFIELD, VT 05156	Andrew Tittler Attorney-Advisor U.S. Department of Interior One Gateway Center, Suite 612 Newton, MA 02458
JOHN AND BARBARA BRUNO (TRUSTEES) PO BOX 1273 CHARLESTOWN, NH 03603	Office of the Solicitor U.S. Department of Interior 1849 C Street, NW, MS 6557 Washington, DC 20240
JOHN R PLAS 6 CLOVER ROAD SPRINGFIELD, VT 05156	Virginia Reddick U.S. Department of Interior Office of Environmental Affairs 1849 C St. NW, Room 2340 MIB Washington, DC 20240
JUDITH KONESKO PO BOX 1245 CHARLESTOWN, NH 03603	Ralph Abele U.S. Environmental Protection Agency 5 Post Office Square, Suite 100 MailCode OEP06-02 Boston, MA 02109

JULIET S O'LEARY PO BOX 387 ASCUTNEY, VT 05030-0387	Director U.S. Environmental Protection Agency Office of Ecosystem Protection; Water Quality Branch 5 Post Office Sq, Ste 100 Boston, MA 02109-3912
KERRY L. & DARLENE F. JOHNSON 941A RIVER ROAD CHARLESTOWN, NH 03603	David Turin U.S. Environmental Protection Agency 5 Post Office Sq, Ste 100 Boston, MA 02109-3946
SHAWN CARROLL LANCE W ROBERTS 170 HURLBUT RD TOLLAND, CT 06084	Mark Kern U.S. Environmental Protection Agency R1 5 Post Office Square, Ste 100 Boston, MA 02109-3912
C/O GEORGE SUCC NOSTRAND TRUSTEE LAWRENCE KASSER CHILDRENS TRUST PO BOX 535 BELLOWS FALLS, VT 05101	Regional Director U.S. Fish & Wildlife Service 300 Westgate Center Dr Northeast Regional Office Hadley, MA 01035-9587
LINDA ANN SPINNEY 289 CONN RIVER ROAD SPRINGFIELD, VT 05156	Melissa Grader U.S. Fish & Wildlife Service 103 East Plumtree Rd. Sunderland, MA 01375
BRIAN GLYNN LINDA STRICKLAND 10 RIVERFRONT DRIVE ROCKINGHAM, VT 05101	John P. Warner U.S. Fish & Wildlife Service 70 Commercial Street Concord, NH 03301
Hydro Section Mass. Division of Energy Resources 100 Cambridge St Ste 1020 Boston, MA 02114-2533	Kenneth Carr U.S. Fish & Wildlife Service 70 Commercial St Ste 300 Concord, NH 03301-5094
Robert David Kubit Environmental Engineer Massachusetts Department of Environmental Protection 627 Main Street Worcester, MA 01608	U.S. Geological Survey MASSACHUSETTS-RHODE ISLAND DIST., WRD 10 Bearfoot Rd Northborough, MA 01532-1528

Massachusetts Department of Environmental Protection 7TH FLOOR 1 Winter St Boston, MA 02108-4747	Director U.S. Geological Survey 361 Commerce Way Pembroke, NH 03275-3718
Office of Dam Safety Massachusetts Dept. of Conservation & Recreation John Augustas Hall 180 Beaman St West Boylston, MA 01583-1109	BERNARD SANDERS HONORABLE U.S. House of Representatives WASHINGTON, DC 20515
Director Massachusetts Dept. of Public Utilities Energy and Environmental Affairs One South Station Boston, MA 02110	Paul Hodes HONORABLE U.S. House of Representatives 506 Cannon WASHINGTON, DC 20515
MASSACHUSETTS DEPT. OF PUBLIC WORKS 10 Park Plz Boston, MA 02116-3933	Kevin Mendik, ESQ NPS Hydro Prgm Coord U.S. National Park Service 15 State Street 10th floor Boston, MA 02109
MASSACHUSETTS DIV. OF WATER POLLUTION CONTROL 1 Winter St Boston, MA 02108-4747	U.S. National Park Service NORTH ATLANTIC REGION 15 State St Boston, MA 02109-3502
Massachusetts Div. of Wetlands 1 Winter St Fl 9 Boston, MA 02108-4747	John F Kerry Senator U.S. Senate 218 Russell Senate Office Bldg WASHINGTON, DC 20510
Chairman Massachusetts Historical Commission 220 Morrissey Blvd Boston, MA 02125-3314	Kelly Ayotte Senator U.S. Senate 144 Russell Senate Office Bldg Washington, DC 20510

<p>ATTY.GENERAL Massachusetts Office of Attorney General UTILITIES DIVISION 1 Ashburton Pl Fl 19 Boston, MA 02108-1518</p>	<p>Patrick J Leahy Honorable U.S. Senate Washington, DC 20510</p>
<p>Director Massachusetts Office of Environ. Affairs 100 Cambridge St Ste 900 Boston, MA 02114-2534</p>	<p>Steve Roy USDA Forest Service Green Mountain & Fingerlakes N.F. 231 N Main St Rutland, VT 05701-2412</p>
<p>RUSSELL COHEN RIVERS ADVOCATE Massachusetts Riverways Program 251 Causeway St Ste 400 Boston, MA 02114-2119</p>	<p>Matthew Thomas Narragansett Tribe 4375 B South County Trail Charlestown, Rhode Island 02813</p>
<p>RUDY JACOBSON MICHAEL J & CYNTHIA H DAVIS 259 RIVER ROAD CHARLESTOWN, NH 03603</p>	<p>ATTY.GENERAL Vermont Attorney General's Office 109 State St Montpelier, VT 05602-2700</p>
<p>DEVENEY CLIFFORD MITCHELL CLIFFORD 222 MISSING LINK ROAD SPRINGFIELD, VT 05156</p>	<p>Coordinator Vermont Department of Fish & Wildlife District Office Coordinator 1000 Mineral Street, Suite 302 Springfield, VT 05156-3168</p>
<p>Harry T Stewart Director New Hampshire Department of Environmental Services 29 Hazen Dr Concord, NH 03301-6503</p>	<p>Roderick Wentworth Specialist Vermont Department of Fish & Wildlife 103 S Main St Bldg 10S Waterbury, VT 05676</p>
<p>Glen Normandeau Executive Dir. New Hampshire Department of Fish and Game 11 Hazen Dr Concord, NH 03301-6502</p>	<p>Hans E Mertens Director of Engineerg Services Vermont Department of Public Service 112 State Street Montpelier, VT 05620</p>

Gabe Gries New Hampshire Department of Fish and Game Region 4 15 Ash Brook Ct Keene, NH 03431	FERC Contact Vermont Department of Public Service 112 STATE STREET - CITY CENTER BUILDING, 3RD FLOOR Montpelier, VT 05620-0001
Legal Department NEW HAMPSHIRE DIVISION OF HISTORICAL 19 Pillsbury St Fl 2 Concord, NH 03301-3570	Vermont Dept. of Forests, Parks & Recreation RECREATION - WATERBURY COMPLEX, 10 SOUTH 103 S Main St Waterbury, VT 05676-1531
State of New Hampshire Attorney General New Hampshire Office of Attorney General 33 Capitol St Concord, NH 03301-6310	Devin A Colman Historic Preservation Review Vermont State Historic Preservation Office 1 National Life Drive Floor 6 Montpelier, VT 05620-0501
Director New Hampshire Office of Planning & Energy 107 Pleasant St, Johnson Hall Concord, NH 03301	VERSAM INVESTMENTS INC 20 VILLAGE SQUARE BELLOWS FALLS, VT 05101
Debra A Howland New Hampshire Public Utilities Commission 21 S. Fruit Street Suite 10 Concord, NH 03301-2429	JOHN M PRATT WALPOLE, TOWN OF OFFICE OF SELECTMEN P.O. Box 729 Walpole, NH 03608
Secretary New Hampshire Public Utilities Commission 21 S Fruit St Ste 10 Concord, NH 03301-2428	WAYNE C JOHNSON 12 RIVERFRONT DR BELLOWS FALLS, VT 05101
JAMES W GALLAGHER CHIEF ENGINEER New Hampshire Water Resources Board 29 Hazen Dr Concord, NH 03301-6504	Mark Prout WHITE MOUNTAIN NATIONAL FOREST 71 White Mountain Dr U.S. Forest Service Campton, NH 03223

JEREMY N HONEYCUTT NINA R SAUVEUR 317 COMMANCHE RD MONTGOMERY, NH 77316	NH DES Owen David PO Box 95 Concord, NH 03301
Regional Director NOAA National Marine Fisheries Service Northeast Regional Office-DOC/NOAA 55 Great Republic Dr Gloucester, MA 01930-2298	Andrew Raddant Regional Environmental Officer Office of Environmental Policy and Compliance (USDOJ) 408 Atlantic Ave., Room 142 Boston, MA 02210-3334
NORTH WALPOLE VILLAGE DISTRICT PO BOX 266 BELLOWS FALLS, VT 05101	David Tomey Northeast National Marine Fisheries Service 1 Blackburn Dr Gloucester, MA 01930-229
HARVEY SCUDDER PRESIDENT NORTHEAST CTR. FOR SOCIAL ISSUE STUDIES Brattleboro, VT 05301	Richard Roos-Collins Director, Legal Services Natural Heritage Institute 2140 Shattuck Avenue, Ste. 801 Berkeley, California 94704-1229
Steven Frias Legal Counsel Rhode Island Public Utilities Commission 89 Jefferson Blvd Warwick, Rhode Island 02888-1046	John Ragonese FERC License Mgr TransCanada Power Marketing Ltd. 4 Park Street Suite 402 Concord, New Hampshire 03301
Jennifer Spina Senior Regulatory Attorney Andrews Kurth LLP 400 North Fifth Street Mail Station 8695 Phoenix, Arizona 85004	Kenneth Wiseman Andrews Kurth LLP 1350 I Street, N.W. Suite 1100 Washington, District of Columbia 20005
DIRECTOR Atlantic Salmon Federation PO Box 467 Skowhegan, Maine 04976-0467	City of Claremont 58 Opera House SQ Claremont, New Hampshire 03743

Rachel Ruppel Connecticut River Joint Commissions 10 Water St, Suite 225 Lebanon, New Hampshire 03766	Alan & Sandra Gaspardino 05 Trust 4 Duffy Street North Walpole, New Hampshire 03609
Brandon Taylor 22 Union St. Concord, Massachusetts 01742	Robert David Kubit Environmental Engineer Massachusetts Department of Environmental Protection 627 Main Street Worcester, Massachusetts 01608
Doug Harris Narragansett Tribe 4375 B South County Trail Charlestown, Rhode Island 02813	Glen Normandeau Executive Dir. New Hampshire Dept of Fish and Game 11 Hazen Dr Concord, New Hampshire 03301-6502
Christina St. Louis Review & Compliance New Hampshire Dept of Historical Resources 19 Pillsbury St., 2nd Floor Concord, New Hampshire 03301-3570	Edna M Feighner Review and Compliance Coordinator NH Division of Historical Resources 19 Pillsbury Street, Second Floor Concord, New Hampshire 03301
Gregg Comstock Supervisor, NH Dept of Environ 29 Hazen Drive, PO Box 95 Concord, New Hampshire 03302-0095	Philip Trowbridge Water Quality Standards Progra NH Dept of Environmental Services P.O. Box 95 Concord, New Hampshire 03301-0095
HARVEY SCUDDER PRESIDENT NORTHEAST CTR. FOR SOCIAL ISSUE STUDIES PO Box 158 Brattleboro, Vermont 05302-0158	Stephen S. Aukuda PO Box 5305 W Lebanon, Vermont 03784
Richard Seaman PO Box 550 Charlestown, New Hampshire 03603	Kathryn Kennedy Applied River Scientist The Nature Conservancy 25 Main Street Suite 220 Northampton, Massachusetts 01060

Joseph P Graveline President The Nolumbeka Projec 88 Columbus Avenue Greenfield, Massachusetts 01301	Kristine L Delkus Esq Deputy Gen. Counsel TransCanada Hydro Northeast, Inc. PO Box 1000 Sta M Calgary, Alberta T2P 5H1
MICHAEL ADAMS U.S. Army Corps of Engineers Suite 205 8 Carmichael St Essex Junction, Vermont 05452-3170	Jennifer L McCarthy Chief, Regulatory Div. U.S. Army Corps of Engineers New England District 696 Virginia Rd Concord, Massachusetts 01742-2751
Director Water Quality Control Branch (WQB) 5 Post Office Sq, Ste 100 Boston, Massachusetts 02109-3946	Regional Director 300 Westgate Center Dr Northeast Regional Office Hadley, Massachusetts 01035-9587

Vernon Project Mailing List:

John T Eddins Advisory Council on Historic Preservation 1100 Pennsylvania Avenue Washington, DC 20004	Board of Selectmen Chairperson PERRY, TOWN OF Municipal Building U.S. Route One Perry, ME 04667
Ann E. Trzasko 30 Lake Drive Somers, NY 10589	Miller Farm Peter Miller 1732 Ft. Bridgman Rd. Vernon, VT 05354
Kenneth D. Kimball Director of Research Appalachian Mountain Club Route 16 Gorham, NH 03581	RAYMOND M BARNES 702 MOUNT HERMON STATION RD NORTHFIELD, MA 01360
Atlantic Office Atlantic Salmon Federation CALAIS, ME 04619-0807	RENEW BUILDING MATERIALS & SAL 16 TOWN CRIER DR BRATTLEBORO, VT 05301

DIRECTOR Atlantic Salmon Federation C/O BILL TOWNSEND - MAINE COUNCIL P.O. Box 807 Skowhegan, ME 04976	Steven Frias Legal Counsel Rhode Island Public Utilities Commission 89 Jefferson Blvd Warwick, RI 02888-1046
Betsy Chickering 527 Route 63 Chesterfield, NH 03433	Harvey Reiter Rhode Island Public Utilities Commission 89 Jefferson Blvd [TOWN MISSING]
JEFFREY MORSE CERSOSIMO INDUSTRIES INC PO BOX 1800 BRATTLEBORO, VT 05302	ROBERT G BARNES 725 MOUNT HERMON RD NORTHFIELD, MA 01360
CHESHIRE, COUNTY OF BOARD OF COUNTY COMMISSIONERS 33 West St Keene, NH 03431-3355	Roberta R Smith Supervisor ROCKINGHAM, TOWN OF Windham County Bellows Falls, VT 05101
Andrea Donlon River Steward Connecticut River Watershed Council, Inc. 15 Bank Row Greenfield, MA 01301	RUDY JACOBSON RODOLFO JACOBSON JR 72 LINSEED ROAD WEST HATFIELD, MA 01088
David Deen Connecticut River Watershed Council, Inc. Saxtons River, VT 05154	Ruth Van Houten Revocable Trust 34 FARR RD, P.O. Box 233 West Chesterfield, NH 03466
DAVID A & IRENE C MILLER 2191 FT. BRIDGMAN RD VERNON, VT 05354	SHARON S & CLAUDE ZAMORA PO BOX 94 VERNON, VT 05354-094
David C. and Merrilyn J. Lewis 267 Turners Falls Road Bernardston, MA 01337	C/O REBECCA CAMERON SPLASH INC 30 SPRUCE ST BRATTLEBORO, VT 05301

Brad Simpkins Division of Forests and Lands (NH) PO Box 1856 Concord, NH 03302-1856	LAEL A WILL STATE OF VERMONT FISH & WILDLIFE DEPARTMENT 100 MINERAL ST STE 302 SPRINGFIELD, VT 05156
DEBORAH GELFAN JONES DR. MARCY E JONES 15 TYLER ST BRATTLEBORO, VT 05301	ROBERT POPP STATE OF VERMONT FISH & WILDLIFE DEPARTMENT 103 SOUTH MAIN ST WATERBURY, VT 05676
NH Division of Historical Resources Edena Feighner 19 Pillsbury St., Second Floor Concord, NH 03301	STEPHEN C MCAVOY PO BOX 21 VERNON, VT 05354-0021
ENTERGY SERVICES INC/PROP. TAX DEPT MAIL STOP: L-ENT-12B 639 LOYOLA AVE NEW ORLEANS, LA 70113	SEWER DEPARTMENT TOWN OF BRATTLEBORO 230 MAIN ST BRATTLEBORO, VT 05301
Diane L. Jones Eric R. Powers 47 Norcross Landing West Chesterfield, NH 03466	SANDRA HARRIS TOWN OF VERNON 567 GOVERNOR HUNT ROAD VERNON, VT 05354
ERIK P & CAROLYN H HAMMARLUND 73 WALNUT ST BRATTLEBORO, VT 05301	CANOE MEADOW CEMETERY TOWN OF WESTMORELAND PO BOX 55 WESTMORELAND, NH 03467
Regional Engineer Federal Energy Regulatory Commission New York Regional Office 19 W 34th St Rm 400 New York, NY 10001-3006	Michael E Hachey Director Eastern Commercial TransCanada Hydro Northeast, Inc. 110 Turnpike Road, Suite 203 Westborough, MA 01581
JUNE ELLSWORTH GERALD ELLSWORTH 317 COMMANCHE RD MONTGOMERY, NH 77316	Christine A Godfrey U.S. Army Corps of Engineers N E Div / Regulatory 696 Virginia Rd Concord, MA 01742-2718

HARRY J FISK 324 BRATTLEBORO RD HINSDALE, NH 03451	Divisional Office, Regulatory U.S. Army Corps of Engineers 696 Virginia Rd Concord, MA 01742-2718
Hubbard LLC P.O. Box 415 Walpole, NH 03608	Jay Clement U.S. Army Corps of Engineers 675 Western Avenue Manchester, ME 04351
JARED S STOLPER 193 OLD DREWSVILLE ROAD WALPOLE, NH 03608	MICHAEL ADAMS U.S. Army Corps of Engineers Suite 205 8 Carmichael St Essex Junction, VT 05452-3170
Jeffrey E. Dunham 102 Old Ferry Road West Chesterfield, NH 03466	Commander U.S. Army Corps of Engineers North Atlantic Division 26 Federal Plz, # 2109 New York, NY 10278-0090
c/o Judith M. and Howard Joerger Joerger Revocable Trust of 2005 P.O. Box 442 West Chesterfield, NH 03466	Office of the Solicitor U.S. Bureau of Indian Affairs 1849 C Street, NW, MS 6557 Washington, DC 20240
John and Elizabeth A. Rancourt P.O. Box 486 West Chesterfield, NH 03466	Keith S. Bluecloud Natural Resources Branch Manag U.S. Bureau of Indian Affairs 545 Marriott Drive Suite 700 Nashville, TN 37214
NORENE K ENNIS JOHN F JEWETT 40275 PASADENA DR TEMECULA, CA 92591	John Bryant Kennedy U.S. Bureau of Land Management 2351 College Station RD Athens, GA 30605-3619
Kenneth L. Sauer P.O. BOX 98 West Chesterfield, NH 03466	Field Manager U.S. Bureau of Land Management 626 E Wisconsin Ave Ste 200 Milwaukee, WI 53202-4618
KENNETH M RAMSAY JR PO BOX 729 BROOMFIELD, CO 80038	Commanding Officer MSO PORTLAND U.S. Coast Guard 259 High St South Portland, ME 04106

<p>Kurt D. Blomquist 399 River Road West Chesterfield, NH 03466</p>	<p>Andrew Tittler Attorney-Advisor U.S. Department of Interior One Gateway Center, Suite 612 Newton, MA 02458</p>
<p>DIRECTOR MAINE BUREAU OF LAND& WATER QUALITY CNTL DEPARTMENT OF ENVIRONMENTAL PROTECTION STATE HOUSE STATION 17 Augusta, ME 04333-0001</p>	<p>Virginia Reddick U.S. Department of Interior Office of Environmental Affairs 1849 C St. NW, Room 2340 MIB Washington, DC 20240</p>
<p>Kathy Eikenberg Maine Bureau of Parks and Lands Submerged Lands Division 22 State House Station Augusta, ME 04333-0022</p>	<p>Director U.S. Department of Interior BRANCH OF LANDS (ES-930) 7450 Boston Blvd Springfield, VA 22153-3121</p>
<p>Samantha Olson Maine Department of Conservation Land Use Regulation Commission 22 State House Station Augusta, ME 04333</p>	<p>Regional Environmental Officer Officer U.S. Department of Interior 408 Atlantic Ave Ste 142 Boston, MA 02110</p>
<p>Kathy Davis Howatt Hydropower Coordinator Maine Department of Environmental Protection 17 State House Station Augusta, ME 04333-0017</p>	<p>Ralph Abele U.S. Environmental Protection Agency 5 Post Office Square, Suite 100 MailCode OEP06-02 Boston, MA 02109</p>
<p>Thomas Schaeffer Maine Department of Inland Fisheries & Regional Wildlife Biologist Jonesboro, ME 04648</p>	<p>Director U.S. Environmental Protection Agency Office of Ecosystem Protection; Water Quality Branch 5 Post Office Sq, Ste 100 Boston, MA 02109</p>
<p>Gordon Cramer Maine Department of Inland Fisheries and Wildlife Penobscot Reg. Headquarters 73 Cobb Rd. Enfield, ME 04493</p>	<p>Mark Kern U.S. Environmental Protection Agency R1 5 Post Office Square, Ste 100 Boston, MA 02109-3912</p>

<p>Gail Wippelhauser Marine Resources Scientist Maine Department of Marine Resources 21 State House Station Augusta, ME 04333</p>	<p>Regional Director U.S. Fish & Wildlife Service 300 Westgate Center Dr Northeast Regional Office Hadley, MA 01035-9587</p>
<p>Norman R Dube Fishery Scientist Maine Department of Marine Resources 650 State Street Bangor, ME 04401</p>	<p>John P. Warner U.S. Fish & Wildlife Service 70 Commercial Street Concord, NH 03301</p>
<p>ARTHUR SPEISS MAINE HISTORIC PRESERVATION COMMISSION 65 STATE HOUSE STATION 55 CAPITOL ST Augusta, ME 04333-0001</p>	<p>Kenneth Carr U.S. Fish & Wildlife Service 70 Commercial St Ste 300 Concord, NH 03301-5094</p>
<p>Thomas S. Burack Commissioner New Hampshire Department of Environmental Services 29 Hazel Drive Concord, NH 03301</p>	<p>Ron Joseph U.S. Fish & Wildlife Service Maine Field Office 17 Godfrey Dr., Ste 2 Orono, ME 04473</p>
<p>Harry T Stewart Director New Hampshire Department of Environmental Services 29 Hazen Dr Concord, NH 03301-6503</p>	<p>U.S. Geological Survey MASSACHUSETTS-RHODE ISLAND DIST., WRD 10 Bearfoot Rd Northborough, MA 01532-1528</p>
<p>Glen Normandeau Executive Dir. New Hampshire Department of Fish and Game 11 Hazen Dr Concord, NH 03301-6502</p>	<p>Director U.S. Geological Survey 361 Commerce Way Pembroke, NH 03275-3718</p>

Gabe Gries New Hampshire Department of Fish and Game Region 4 15 Ash Brook Ct Keene, NH 03431	HONORABLE BERNARD SANDERS U.S. House of Representatives WASHINGTON, DC 20515
Legal Department NEW HAMPSHIRE DIVISION OF HISTORICAL 19 Pillsbury St Fl 2 Concord, NH 03301-3570	HONORABLE Paul Hodes U.S. House of Representatives 506 Cannon WASHINGTON, DC 20515
State of New Hampshire Attorney General New Hampshire Office of Attorney General 33 Capitol St Concord, NH 03301-6310	Kevin Mendik, ESQ NPS Hydro Prgm Coord U.S. National Park Service 15 State Street 10th floor Boston, MA 02109
Director New Hampshire Office of Planning & Energy 107 Pleasant St, Johnson Hall Concord, NH 03301	U.S. National Park Service NORTH ATLANTIC REGION 15 State St Boston, MA 02109-3502
Debra A Howland New Hampshire Public Utilities Commission 21 S. Fruit Street Suite 10 Concord, NH 03301-2429	Senator Kelly Ayotte U.S. Senate 144 Russell Senate Office Bldg Washington, DC 20510
Secretary New Hampshire Public Utilities Commission 21 S Fruit St Ste 10 Concord, NH 03301-2428	Honorable Patrick J Leahy U.S. Senate Washington, DC 20510
JAMES W GALLAGHER CHIEF ENGINEER New Hampshire Water Resources Board 29 Hazen Dr Concord, NH 03301-6504	Steve Roy USDA Forest Service Green Mountain & Fingerlakes N.F. 231 N Main St Rutland, VT 05701-2412

SHAWN CARROLL NEWPORT SAND & GRAVEL CO INC PO BOX 1000 NEWPORT, NH 03773-1000	ATTY.GENERAL Vermont Attorney General's Office 109 State St Montpelier, VT 05602-2700
BILL CARPENTER NH DRED DIVISION OF F&L P.O. Box 1856 Concord, NH 03301	Mark Sciarotta Vermont Attorney General's Office 109 State St Montpelier, VT 05609-0001
Sean P McDermott Fisheries Biologist NOAA 55 Great Republic Drive Gloucester, MA 01930-2237	Coordinator Vermont Department of Fish & Wildlife District Office Coordinator 1000 Mineral Street, Suite 302 Springfield, VT 05156-3168
Regional Director NOAA National Marine Fisheries Service Northeast Regional Office-DOC/NOAA 55 Great Republic Dr Gloucester, MA 01930-2298	Roderick Wentworth Specialist Vermont Department of Fish & Wildlife 103 S Main St Bldg 10S Waterbury, VT 05676
HARVEY SCUDDER PRESIDENT NORTHEAST CTR. FOR SOCIAL ISSUE STUDIES P.O. Box 158 Brattleboro, VT 05301	Hans E Mertens Director of Engineerg Services Vermont Department of Public Service 112 State Street Montpelier, VT 05620
John S Howard Director-FERC Hydro Compliance Northeast Generation Company 99 Millers Falls Road Northfield, MA 01360	FERC Contact Vermont Department of Public Service 112 STATE STREET - CITY CENTER BUILDING, 3RD FLOOR Montpelier, VT 05620-0001
David Tomey Northeast National Marine Fisheries Service 1 Blackburn Dr Glouchester, MA 01930-2298	Vermont Dept. of Forests, Parks & Recreation RECREATION - WATERBURY COMPLEX, 10 SOUTH 103 S Main St Waterbury, VT 056761531

Andrew Raddant Regional Environmental Officer Office of Environmental Policy and Compliance (USDOJ) 408 Atlantic Ave., Room 142 Boston, MA 02210-3334	Devin A Colman Historic Preservation Review Vermont State Historic Preservation Office 1 National Life Drive, Floor 6 Montpelier, VT 05620-0501
NH DES Owen David PO Box 95 Concord, NH 03301	JOHN M PRATT WALPOLE, TOWN OF OFFICE OF SELECTMEN P.O. Box 729 Walpole, NH 03608
Pleasant Point Reservation Passamaquoddy Native American Nation Tribal Building Office Route No. 190 Perry, ME 04667	C/O BERNARD PALITZ WESTVIEW MGT CORP 1 NATIONAL LIFE DR, MAIN 2 MONTPELIER, VT 05620
Rick Phillips-Doyle Governor PASSAMAQUODDY TRIBE - PLEASANT POINT 9 Sakom Way Pleasant Point Reservation Perry, ME 04667	Mark Prout WHITE MOUNTAIN NATIONAL FOREST 71 White Mountain Dr U.S. Forest Service Campton, NH 03223
WINDHAM COURT PARTNERS 129 LINCOLN AVE MANCHESTER CENTER, VT 05255	Wilfred H. and Wendy B. Richardson P.O. Box 156 Chesterfield, NH 03443
WINDHAM, COUNTY OF COUNTY COURTHOUSE Newfane, VT 05345	WILLIAM A & PATRICIA MACDONALD P O BOX 324 WESTMINSTER, VT 05158-0324
KIMBERLY HAYDEN CARROLL, GEORGE & PRATT 64 N Main St # 66 Rutland, Vermont 05701-3249	Richard Roos-Collins Director, Legal Services Natural Heritage Institute 2140 Shattuck Avenue, Ste. 801 Berkeley, California 94704-1229
Catherine Shively Senior Counsel Northeast Utilities Service Company PO Box 330 Manchester, New Hampshire 03105-0330	ROBERT A BERSAK Northeast Utilities Service Company PO Box 270 Hartford, 06141-0270

<p>John Ragonese FERC License Mgr TransCanada Power Marketing Ltd. 4 Park Street, Suite 402 Concord, New Hampshire 03301</p>	<p>Rachel Ruppel Connecticut River Joint Commissions 10 Water St, Suite 225 Lebanon, New Hampshire 03766</p>
<p>CONNECTICUT RIVER VALLEY FLOOD COMM PO Box 511 Greenfield, Massachusetts 01302</p>	<p>Brandon Taylor 22 Union St. Concord, Massachusetts 01742</p>
<p>City of Northfield 702 Mount Hermon Station Rd. Northfield, Massachusetts 01360</p>	<p>City of Northfield 725 Mount Hermon Station Rd. Northfield, Massachusetts 01360</p>
<p>MA, City of West Hatfield 72 Linseed Road West Hatfield, Massachusetts 01088</p>	<p>Matthew Thomas Narragansett Indian Tribe 4375 B South County Trail Charlestown, Rhode Island 02813</p>
<p>Doug Harris Narragansett Indian Tribe 4375 B South County Trail Charlestown, Rhode Island 02813</p>	<p>Glen Normandeau Executive Dir. New Hampshire Dept of Fish and Game 11 Hazen Dr Concord, New Hampshire 03301</p>
<p>Christina St. Louis Review & Compliance New Hampshire Department of Historical Resources 19 Pillsbury St., 2nd Floor Concord, New Hampshire 03301-3570</p>	<p>Edna M Feighner Review and Compliance Coordinator NH Division of Historical Resources 19 Pillsbury Street, Second Floor Concord, New Hampshire 03301</p>
<p>NH, City of Chesterfield 527 Route 63 Chesterfield, New Hampshire 03433</p>	<p>NH, City of Montgomery 317 Commanche RD Montgomery, New Hampshire 77316</p>
<p>NH, City of Westmoreland PO Box 55 Westmoreland, New Hampshire 03467</p>	<p>Philip Trowbridge Water Quality Standards Program NH Department of Environmental Services P.O. Box 95 Concord, New Hampshire 03301-0095</p>

Gregg Comstock Supervisor, NH Dept of Environ 29 Hazen Drive, PO Box 95 Concord, New Hampshire 03302-0095	Andrew Raddant Regional Environmental Officer Office of Environmental Policy and Compliance (USDOJ) 408 Atlantic Ave. Room 142 Boston, Massachusetts 02210
Kathryn Kennedy Applied River Scientist The Nature Conservancy 25 Main Street, Suite 220 Northampton, Massachusetts 01060	Joseph P Graveline President The Nolumbeka Projec 88 Columbus Avenue Greenfield, Massachusetts 01301
Jennifer L McCarthy Chief, Regulatory Div. U.S. Army Corps of Engineers New England District 696 Virginia Rd Concord, Massachusetts 01742	Jay Clement U.S. Army Corps of Engineers 675 Western Avenue Manchester, Maine 04351
Ron Joseph U.S. Fish & Wildlife Service Maine Field Office 17 Godfrey Dr., Ste 2 Orono, Maine 04473	Steve Roy USDA Forest Service Green Mountain & Fingerlakes N.F. 231 N Main St Rutland, Vermont 05701-2412

Turner Falls Project Mailing List:

AMHERST, TOWN OF TOWN HALL 4 Boltwood Ave Amherst, MA 01002-2301	Director New Hampshire Office of Planning & Energy 107 Pleasant St, Johnson Hall Concord, NH 03301
Athol (MA), City of 584 Main St Athol, MA 01331-1824	Debra A Howland New Hampshire Public Utilities Commission 21 S. Fruit Street Suite 10 Concord, NH 03301-2429
DIRECTOR Atlantic Salmon Federation C/O BILL TOWNSEND - MAINE P.O. Box 467 Skowhegan, ME 04976	Secretary New Hampshire Public Utilities Commission 21 S Fruit St Ste 10 Concord, NH 03301-2428

<p>JOHN BENNETT CO-CHAIR 329 Wilson Hill Rd Colrain, MA 01340-9611</p>	<p>JAMES W GALLAGHER CHIEF ENGINEER New Hampshire Water Resources Board 29 Hazen Dr Concord, NH 03301-6504</p>
<p>BRATTLEBORO, TOWN OF ADMINISTRATIVE OFFICES 230 Main St Brattleboro, VT 05301-2840</p>	<p>Regional Director NOAA National Marine Fisheries Service Northeast Regional Office-DOC/NOAA 55 Great Republic Dr Gloucester, MA 01930-2298</p>
<p>SIMEON BRUNER CAMBRIDGE DEVELOPMENT CORPORATION BRUNER, COTT, & ASSOCIATES, INC. 130 Prospect St Cambridge, MA 02139-1844</p>	<p>Regional Director NOAA National Marine Fisheries Service Northeast Regional Office-DOC/NOAA 55 Great Republic Dr Gloucester, MA 01930-2298</p>
<p>CHAIRMAN CHESHIRE, COUNTY OF BOARD OF COUNTY COMMISSIONERS 33 West St Keene, NH 03431-3355</p>	<p>David Tomey Northeast National Marine Fisheries Service 1 Blackburn Dr Gloucester, MA 01930-2298</p>
<p>COMMISSIONER CHESHIRE, COUNTY OF BOARD OF COUNTY COMMISSIONERS 33 West St Keene, NH 03431-3355</p>	<p>NORTHFIELD, TOWN OF BOARD OF SELECTMAN - TOWN HALL MAIN STREET NORTHFIELD, MA 01360</p>
<p>CONNECTICUT RIVER VALLEY FLOOD COMM PO Box 511 Greenfield, Massachusetts 01302-0511</p>	<p>Andrew Raddant Regional Environmental Officer Office of Environmental Policy and Compliance (USDOJ) 408 Atlantic Ave. Room 142 Boston, MA 02210-3334</p>
<p>ATTY.GENERAL Connecticut Office of Attorney General 55 Elm St Hartford, CT 06106-1746</p>	<p>ORANGE, TOWN OF TOWN HALL 6 Prospect St Orange, MA 01364-1199</p>

Rachel Ruppel Connecticut River Joint Commissions 10 Water St, Suite 225 Lebanon, New Hampshire 03766	PARKS & RECREATION UNIT DEPARTMENT OF ENVIRONMENTAL PROTECTION STATE OFFICE BUILDING HARTFORD, CT 06115
CONNECTICUT WATER COMPLIANCE UNIT DEPARTMENT OF ENVIRONMENTAL PROTECTION STATE OFFICE BUILDING HARTFORD, CT 06115	Roger A Hunt Director Quinebaug Associates, LLC 370 Main St, Ste 800 Worcester, MA 01608-1741
CONNECTICUT WATER RESOURCES UNIT DEPARTMENT OF ENVIRONMENTAL PROTECTION STATE OFFICE BUILDING HARTFORD, CT 06115	THOMAS R SHEARER SHEARER, THOMAS R. 101 Cross Rd Northfield, MA 01360-9632
COUNCIL ON ENVIRONMENTAL QUALITY ROOM 141 165 Capitol Ave Hartford, CT 06106-1659	Christine A Godfrey U.S. Army Corps of Engineers N E Div / Regulatory 696 Virginia Rd Concord, MA 01742-2718
CT Dept of Environmental Protection OFFICE OF THE COMMISSIONER 79 Elm St Hartford, CT 06106-1650	MICHAEL ADAMS U.S. Army Corps of Engineers Suite 205 8 Carmichael St Essex Junction, VT 05452-3170
CT Dept of Environmental Protection OFFICE OF ENVIRONMENTAL REVIEW 79 Elm St Hartford, CT 06106-1650	Commander U.S. Army Corps of Engineers North Atlantic Division 26 Federal Plz, # 2109 New York, NY 10278-0090

<p>Brian Golembiewski Environmental Analyst 3 Department of Environmental Protection CT Department of Environmental Protection 79 Elm Street Hartford, CT 06106-5127</p>	<p>Office of the Solicitor U.S. Bureau of Indian Affairs 1849 C Street, NW, MS 6557 Washington, DC 20240</p>
<p>Brad Simpkins Division of Forests and Lands (NH) P.O. Box 1856 Concord, NH 03302-1856</p>	<p>Keith S. Bluecloud Natural Resources Branch Manag U.S. Bureau of Indian Affairs 545 Marriott Drive Suite 700 Nashville, TN 37214</p>
<p>ERVING, TOWN OF BOARD OF SELECTMAN - TOWN HALL 3 E Main St Erving, MA 01344-9717</p>	<p>John Bryant Kennedy U.S. Bureau of Land Management 2351 College Station RD Athens, GA 30605-3619</p>
<p>Regional Engineer Federal Energy Regulatory Commission New York Regional Office 19 W 34th St Rm 400 New York, NY 10001-3006</p>	<p>Field Manager U.S. Bureau of Land Management 626 E Wisconsin Ave Ste 200 Milwaukee, WI 53202-4618</p>
<p>Susan M. Babcock, ESQ FirstLight Power Resources 200 Glastonbury Boulevard Suite 303 Glastonbury, CT 06033</p>	<p>U.S. Coast Guard MSO BOSTON 447 Commercial St Boston, MA 02109-1027</p>
<p>John S Howard Director-FERC Hydro Compliance FirstLight Power Resources Services, LLC 99 Millers Falls Road Northfield, MA 01360</p>	<p>Commanding Officer MSO PORTLAND U.S. Coast Guard 259 High St South Portland, ME 04106</p>
<p>JOHN BENNETT CO-CHAIR FRANKLIN CONSERVATION DISTRICT 329 Wilson Hill Rd Colrain, MA 01340-9611</p>	<p>Andrew Tittler Attorney-Advisor U.S. Department of Interior One Gateway Center Suite 612 Newton, MA 02458</p>

PEGGY SLOAN DIRECTOR FRANKLIN COUNTY COMMISSION COURTHOUSE 425 Main St Greenfield, MA 01301-3304	Office of the Solicitor U.S. Department of Interior 1849 C Street, NW, MS 6557 Washington, DC 20240
CHAIRMAN FRANKLIN, COUNTY OF 425 Main St Greenfield, MA 01301-3304	Virginia Reddick U.S. Department of Interior Office of Environmental Affairs 1849 C St. NW, Room 2340 MIB Washington, DC 20240
GREENFIELD COUNTY FRANKLIN, COUNTY OF 425 Main St Greenfield, MA 01301-3304	Regional Environmental Officer Officer U.S. Department of Interior 408 Atlantic Ave Ste 142 Boston, MA 02110
Board of Selectman GILL, TOWN OF 325 Main Road Gill, MA 01354	Ralph Abele U.S. Environmental Protection Agency 5 Post Office Square, Suite 100 MailCode OEP06-02 Boston, MA 02109
GREENFIELD TOWN OF TOWN HALL 14 Court Sq Greenfield, MA 01301-3547	Director U.S. Environmental Protection Agency Office of Ecosystem Protection; Water Quality Branch 5 Post Office Sq, Ste 100 Boston, MA 02109-3912
SELECTMAN HINSDALE, TOWN OF BOARD OF SELECTMAN - TOWN HALL MAIN STREET HINSDALE, NH 03451	David Turin U.S. Environmental Protection Agency 5 Post Office Sq, Ste 100 Boston, MA 02109-3946
SHPO HISTORICAL COMMISSION CT Commission on Culture and Tourism One Constitution Plaza Hartford, CT 06103	Mark Kern U.S. Environmental Protection Agency R1 5 Post Office Square, Ste 100 Boston, MA 02109-3912

JOHN F KAUFHOLD P.O. Box 36 Miranda, CA 95553	Regional Director U.S. Fish & Wildlife Service 300 Westgate Center Dr Northeast Regional Office Hadley, MA 01035-9587
RICHARD BAILEY SECY. MARBLEHEAD MUNICIPAL LIGHT DEPT. 80 Commercial St Marblehead, MA 01945-3146	Melissa Grader U.S. Fish & Wildlife Service 103 East Plumtree Rd. Sunderland, MA 01375
Hydro Section Mass. Division of Energy Resources 100 Cambridge St Ste 1020 Boston, MA 021142533	John P. Warner U.S. Fish & Wildlife Service 70 Commercial Street Concord, NH 03301
Robert David Kubit Environmental Engineer Massachusetts Department of Environmental Protection 627 Main Street Worcester, MA 01608	U.S. Fish & Wildlife Service Suite 300 70 Commercial St Concord, NH 03301-5031
Massachusetts Department of Environmental Protection 7TH FLOOR 1 Winter St Boston, MA 02108-4747	Kenneth Carr U.S. Fish & Wildlife Service 70 Commercial St Ste 300 Concord, NH 03301-5094
Office of Dam Safety Massachusetts Dept. of Conservation & Recreation John Augustas Hall 180 Beaman St West Boylston, MA 01583-1109	U.S. Geological Survey MASSACHUSETTS-RHODE ISLAND DIST., WRD 10 Bearfoot Rd Northborough, MA 01532-1528
Director Massachusetts Dept. of Public Utilities Energy and Environmental Affairs One South Station Boston, MA 02110	Director U.S. Geological Survey 361 Commerce Way Pembroke, NH 03275-3718

<p>MASSACHUSETTS DEPT. OF PUBLIC WORKS 10 Park Plz Boston, MA 02116-3933</p>	<p>U.S. Geological Survey 101 Pitkin St East Hartford, CT 06108-3316</p>
<p>MASSACHUSETTS DIV. OF WATER POLLUTION CONTROL 1 Winter St Boston, MA 02108-4747</p>	<p>Senator Kelly Ayotte U.S. House of Representatives 144 Russell Senate Office Bldg Washington, DC 20510</p>
<p>Massachusetts Div. of Wetlands 1 Winter St Fl 9 Boston, MA 02108-4747</p>	<p>The Honorable John W Olver U.S. House of Representatives 1111 Longworth HOB Washington, DC 20515</p>
<p>Chairman Massachusetts Historical Commission 220 Morrissey Blvd Boston, MA 02125-3314</p>	<p>Kevin Mendik, ESQ NPS Hydro Prgm Coord U.S. National Park Service 15 State Street 10th floor Boston, MA 02109</p>
<p>ATTY.GENERAL Massachusetts Office of Attorney General UTILITIES DIVISION 1 Ashburton Pl Fl 19 Boston, MA 02108-1518</p>	<p>U.S. National Park Service NORTH ATLANTIC REGION 15 State St Boston, MA 02109-3502</p>
<p>Director Massachusetts Office of Environ. Affairs 100 Cambridge St Ste 900 Boston, MA 02114-2534</p>	<p>Senator Richard Blumenthal U.S. Senate 702 Hart Senate Office Bldg Washington, DC 20510</p>
<p>RUSSELL COHEN RIVERS ADVOCATE Massachusetts Riverways Program 251 Causeway St Ste 400 Boston, MA 02114-2119</p>	<p>Senator Joseph I Lieberman U.S. Senate 706 Hart Senate Office Bldg WASHINGTON, DC 20510</p>

<p>Stacy Dufresne MOHEGAN INDIAN TRIBE 5 Crow Hill Rd Uncasville, CT 06382-1118</p>	<p>Senator John F Kerry U.S. Senate 218 Russell Senate Office Bldg WASHINGTON, DC 20510</p>
<p>Tribal Chairperson MOHEGAN INDIAN TRIBE 5 Crow Hill Rd Uncasville, CT 06382-1118</p>	<p>Senator Kelly Ayotte U.S. Senate 144 Russell Senate Office Bldg Washington, DC 20510</p>
<p>MONTAGUE, TOWN OF TOWN HALL 1 Avenue A Turners Falls, MA 01376-1128</p>	<p>Patrick J Leahy Honorable U.S. Senate Washington, DC 20510</p>
<p>SELECTMAN MONTAGUE, TOWN OF TOWN HALL 1 Avenue A Turners Falls, MA 01376-1128</p>	<p>Steve Roy USDA Forest Service Green Mountain & Fingerlakes N.F. 231 N Main St Rutland, VT 05701-2412</p>
<p>Harry T Stewart Director New Hampshire Dept of Environmental Services 29 Hazen Dr Concord, NH 03301-6503</p>	<p>Michael A Swiger Partner Van Ness Feldman, P.C. 1050 Thomas Jefferson Street, NW 7th Floor Washington, DC 20007</p>
<p>Glen Normandeau Executive Dir. New Hampshire Department of Fish and Game 11 Hazen Dr Concord, NH 03301-6502</p>	<p>Coordinator Vermont Dept of Fish & Wildlife District Office Coordinator 1000 Mineral Street, Suite 302 Springfield, VT 05156-3168</p>
<p>Gabe Gries New Hampshire Department of Fish and Game Region 4 15 Ash Brook Ct Keene, NH 03431</p>	<p>Roderick Wentworth Specialist Vermont Department of Fish & Wildlife 103 S Main St Bldg 10S Waterbury, VT 05676</p>

<p>Legal Department NEW HAMPSHIRE DIVISION OF HISTORICAL 19 Pillsbury St Fl 2 Concord, NH 03301-3570</p>	<p>FERC Contact Vermont Department of Public Service 112 STATE STREET - CITY CENTER BUILDING, 3RD FLOOR Montpelier, VT 05620-0001</p>
<p>State of New Hampshire Attorney General New Hampshire Office of Attorney General 33 Capitol St Concord, NH 03301-6310</p>	<p>Vermont Dept. of Forests, Parks & Recreation RECREATION - WATERBURY COMPLEX, 10 SOUTH 103 S Main St Waterbury, VT 05676-1531</p>
<p>ATTY.GENERAL Vermont Attorney General's Office 109 State St Montpelier, VT 05602-2700</p>	<p>Devin A Colman Historic Preservation Review Vermont State Historic Preservation Office 1 National Life Drive Floor 6 Montpelier, VT 05620-0501</p>
<p>WILDLIFE UNIT DEPARTMENT OF ENVIRONMENTAL PROTECTION STATE OFFICE BUILDING HARTFORD, CT 06115</p>	<p>Sandra B Harris Town Clerk VERNON, TOWN OF 567 Governor Hunt Rd Vernon, VT 05354-9484</p>
<p>Will and Jill Crooker 181 Old Bernardston Road Northfield, MA 01360</p>	<p>SELECTMAN VERNON, TOWN OF RR 2 Box 525 Vernon, VT 05354-9756</p>
<p>WINDHAM, COUNTY OF COUNTY COURTHOUSE Newfane, VT 05345</p>	<p>VERNON, TOWN OF RR 2 Box 525 Vernon, VT 05354-9756</p>
<p>Paul Ducheny City of Holyoke (MA) Gas & Elec. Dept. One Canal Street Holyoke, Massachusetts 01040</p>	<p>Mark Prout WHITE MOUNTAIN NATIONAL FOREST 71 White Mountain Dr U.S. Forest Service Campton, NH 03223</p>

<p>Susan M. Babcock, ESQ FirstLight Power Resources 200 Glastonbury Boulevard Suite 303 Glastonbury, Connecticut 06033</p>	<p>Nancy Skancke NJS Law PLC 1025 Conn. Ave., N.W. Suite 1000 Washington, District of Columbia 20036</p>
<p>JOHN BENNETT CO-CHAIR FRANKLIN CONSERVATION DISTRICT 329 Wilson Hill Rd Colrain, Massachusetts 01340-9611</p>	<p>Julia Wood Van Ness Feldman, LLP 1050 Thomas Jefferson Street, NW Washington, District of Columbia 20007</p>
<p>WILLIAM J NADEAU Northeast Utilities Service Company PO Box 270 Hartford, CT 06141-0270</p>	<p>Frances Francis Spiegel & McDiarmid LLP 1333 New Hampshire Avenue, NW Second Floor Washington, District of Columbia 20036</p>
<p>Matthew Leger-Small Administrative Coordinator Franklin County (MA) Reg. Housing & Redev. Auth. 42 Canal Road Turners Falls, Massachusetts 01376</p>	<p>Gus Bakas Director Massachusetts Hydro 99 Millers Falls Road Northfield, Massachusetts 01360</p>
<p>Matthew Thomas Narragansett Indian Tribe 4375 B South County Trail Charlestown, Rhode Island 02813</p>	<p>Brandon Taylor 22 Union St. Concord, Massachusetts 01742</p>
<p>Glen Normandeau Executive Dir. New Hampshire Dept of Fish and Game 11 Hazen Dr Concord, New Hampshire 03301</p>	<p>Doug Harris Narragansett Indian Tribe 4375 B South County Trail Charlestown, Rhode Island 02813</p>
<p>Debra A Howland New Hampshire Public Utilities Commission 21 S. Fruit Street Suite 10 Concord, New Hampshire 03301</p>	<p>Christina St. Louis Review & Compliance New Hampshire Department of Historical Resources 19 Pillsbury St., 2nd Floor Concord, New Hampshire 03301</p>

Kathryn Kennedy Applied River Scientist The Nature Conservancy 25 Main Street Suite 220 Northampton, Massachusetts 01060	BOARD OF SELECTMAN - TOWN HALL MAIN STREET NORTHFIELD, MASSACHUSETTS 01360
Jennifer L McCarthy Chief, Regulatory Div. U.S. Army Corps of Engineers New England District 696 Virginia Rd Concord, Massachusetts 01742	Joseph P Graveline President The Nolumbeka Projec 88 Columbus Avenue Greenfield, Massachusetts 01301
Windham, County of PO Box 207 Newfane, Vermont 05345-0207	Sandra B Harris Town Clerk VERNON, TOWN OF 567 Governor Hunt Rd Vernon, Vermont 05354-9484

Northfield Mountain Pumped Storage Project Mailing List:

JOHN BENNETT CO-CHAIR 329 Wilson Hill Rd Colrain, MA 01340-9611	Tribal Chairperson MOHEGAN INDIAN TRIBE 5 Crow Hill Rd Uncasville, CT 06382-1118
SIMEON BRUNER CAMBRIDGE DEVELOPMENT CORPORATION BRUNER, COTT, & ASSOCIATES, INC. 130 Prospect St Cambridge, MA 02139-1844	Regional Director NOAA National Marine Fisheries Service Northeast Regional Office-DOC/NOAA 55 Great Republic Dr Gloucester, MA 01930-2298
ATTY.GENERAL Connecticut Office of Attorney General 55 Elm St Hartford, CT 06106-1746	Roger A Hunt Director Quinebaug Associates, LLC 370 Main St, Ste 800 Worcester, MA 01608-1741
Andrea Donlon River Steward Connecticut River Watershed Council, Inc. 15 Bank Row Greenfield, MA 01301	THOMAS R SHEARER SHEARER, THOMAS R. 101 Cross Rd Northfield, MA 01360-9632

CT Dept of Environmental Protection OFFICE OF THE COMMISSIONER 79 Elm St Hartford, CT 06106-1650	Leon F Szeptycki Environmental Counsel Trout Unlimited 1300 17th St N Ste 500 Arlington, VA 22209-3800
Brian Golembiewski Environmental Analyst 3 Department of Environmental Protection CT Department of Environmental Protection 79 Elm Street Hartford, CT 06106-5127	CHARLES OLCHOWSKI Trout Unlimited MA/RI COUNCIL 28 Smith St Greenfield, MA 01301-2018
Regional Engineer Federal Energy Regulatory Commission New York Regional Office 19 W 34th St Rm 400 New York, NY 10001-3006	Commander U.S. Army Corps of Engineers North Atlantic Division 26 Federal Plz, # 2109 New York, NY 10278-0090
Susan M. Babcock, ESQ FirstLight Power Resources 200 Glastonbury Boulevard Suite 303 Glastonbury, CT 06033	Office of the Solicitor U.S. Bureau of Indian Affairs 1849 C Street, NW, MS 6557 Washington, DC 20240
ALBERT E FISH, Jr FISH, ALBERT E., JR. 40 Ben Hale Rd Gill, MA 01376-9741	Field Manager U.S. Bureau of Land Management 626 E Wisconsin Ave Ste 200 Milwaukee, WI 53202-4618
PEGGY SLOAN DIRECTOR FRANKLIN COUNTY COMMISSION COURTHOUSE 425 Main St Greenfield, MA 01301-3304	U.S. Coast Guard MSO BOSTON 447 Commercial St Boston, MA 02109-1027
Linda Dunlavy Executive Director Franklin Regional Council of Governments 425 Main Street Greenfield, MA 01301	Office of the Solicitor U.S. Department of Interior 1849 C Street, NW, MS 6557 Washington, DC 20240

<p>SHPO HISTORICAL COMMISSION CT Commission on Culture and Tourism One Constitution Plaza Hartford, CT 06103</p>	<p>Regional Environmental Officer Officer U.S. Department of Interior 408 Atlantic Ave Ste 142 Boston, MA 02110</p>
<p>JOHN F KAUFHOLD P.O. Box 36 Miranda, CA 95553</p>	<p>David Turin U.S. Environmental Protection Agency 5 Post Office Sq, Ste 100 Boston, MA 02109-3946</p>
<p>Hydro Section Mass. Division of Energy Resources 100 Cambridge St Ste 1020 Boston, MA 02114-2533</p>	<p>Director U.S. Environmental Protection Agency Water Quality Control Branch (WQB) 5 Post Office Sq, Ste 100 BOSTON, MA 02109-3946</p>
<p>Massachusetts Department of Environmental Protection 7TH FLOOR 1 Winter St Boston, MA 02108-4747</p>	<p>Ralph Abele U.S. Environmental Protection Agency 5 Post Office Square, Suite 100 MailCode OEP06-02 Boston, MA 02109</p>
<p>Robert David Kubit Environmental Engineer Massachusetts Department of Environmental Protection 627 Main Street Worcester, MA 01608</p>	<p>Kenneth Carr U.S. Fish & Wildlife Service 70 Commercial St Ste 300 Concord, NH 03301-5094</p>
<p>Office of Dam Safety Massachusetts Dept. of Conservation & Recreation John Augustas Hall 180 Beaman St West Boylston, MA 01583-1109</p>	<p>Melissa Grader U.S. Fish & Wildlife Service 103 East Plumtree Rd. Sunderland, MA 01375</p>
<p>Director Massachusetts Dept. of Public Utilities Energy and Environmental Affairs One South Station Boston, MA 02110</p>	<p>Regional Director U.S. Fish & Wildlife Service 300 Westgate Center Dr Northeast Regional Office Hadley, MA 01035-9587</p>

<p>MASSACHUSETTS DEPT. OF PUBLIC WORKS 10 Park Plz Boston, MA 02116-3933</p>	<p>U.S. Geological Survey 101 Pitkin St East Hartford, CT 06108-3316</p>
<p>MASSACHUSETTS DIV. OF WATER POLLUTION CONTROL 1 Winter St Boston, MA 02108-4747</p>	<p>U.S. Geological Survey MASSACHUSETTS-RHODE ISLAND DIST., WRD 10 Bearfoot Rd Northborough, MA 01532-1528</p>
<p>Massachusetts Div. of Wetlands 1 Winter St Fl 9 Boston, MA 02108-4747</p>	<p>The Honorable John W Olver U.S. House of Representatives 1111 Longworth HOB Washington, DC 20515</p>
<p>Chairman Massachusetts Historical Commission 220 Morrissey Blvd Boston, MA 02125-3314</p>	<p>U.S. National Park Service NORTH ATLANTIC REGION 15 State St Boston, MA 02109-3502</p>
<p>ATTY.GENERAL Massachusetts Office of Attorney General UTILITIES DIVISION 1 Ashburton Pl Fl 19 Boston, MA 02108-1518</p>	<p>Kevin Mendik, ESQ NPS Hydro Prgm Coord U.S. National Park Service 15 State Street 10th floor Boston, MA 02109</p>
<p>Director Massachusetts Office of Environ. Affairs 100 Cambridge St Ste 900 Boston, MA 02114-2534</p>	<p>Richard Blumenthal Senator U.S. Senate 702 Hart Senate Office Bldg Washington, DC 20510</p>
<p>RUSSELL COHEN RIVERS ADVOCATE Massachusetts Riverways Program 251 Causeway St Ste 400 Boston, MA 02114-2119</p>	<p>Joseph I Lieberman Senator U.S. Senate 706 Hart Senate Office Bldg WASHINGTON, DC 20510</p>

<p>Stacy Dufresne MOHEGAN INDIAN TRIBE 5 Crow Hill Rd Uncasville, CT 06382-1118</p>	<p>John F Kerry Senator U.S. Senate 218 Russell Senate Office Bldg WASHINGTON, DC 20510</p>
<p>John S Howard Director-FERC Hydro Compliance FirstLight Power Resources 99 Millers Falls Road Northfield, MA 01360</p>	<p>Michael A Swiger Partner Van Ness Feldman, P.C. 1050 Thomas Jefferson Street, NW 7th Floor Washington, DC 20007</p>
<p>Will and Jill Crooker 181 Old Bernardston Road Northfield, MA 01360</p>	<p>Roderick Wentworth Specialist Vermont Department of Fish & Wildlife 103 S Main St Bldg 10S Waterbury, VT 05676</p>
<p>Kimberly MacPhee Land Use & Natural Resources P Franklin Regional Council of Governments 12 Olive Street, Suite 2 Greenfield, Massachusetts 01301</p>	<p>Tim Storrow FRANKLIN CONSERVATION DISTRICT 73 River Road Gill, Massachusetts 01376</p>
<p>Gus Bakas Director Massachusetts Hydro 99 Millers Falls Road Northfield, Massachusetts 01360</p>	<p>Julia Wood Van Ness Feldman, LLP 1050 Thomas Jefferson Street, NW Washington, District of Columbia 20007</p>
<p>Ann Banash Franklin Regional Council of Governments 425 Main St Ste 40 Greenfield, Massachusetts 01301-3313</p>	<p>Phelps, Mason PO Box 122 Wendell, MA 01379-0122</p>
<p>Donald Pugh Trout Unlimited 10 Old Stage Rd Wendell, Massachusetts 01379</p>	<p>Paul Duchenev City of Holyoke, Gas & Electric Dept. One Canal Street Holyoke, Massachusetts 01040</p>
<p>Nancy Skancke NJS Law PLC 1025 Conn. Ave., N.W. Suite 1000 Washington, District of Columbia 20036</p>	<p>Rachel Ruppel Connecticut River Joint Commissions 10 Water St, Suite 225 Lebanon, New Hampshire 03766</p>

<p>RUSSELL COHEN RIVERS ADVOCATE Massachusetts Riverways Program 251 Causeway St Ste 400 Boston, Massachusetts 02114</p>	<p>CONNECTICUT RIVER VALLEY FLOOD COMM. PO Box 511 Greenfield, Massachusetts 01302-0511</p>
<p>Susan M. Babcock, ESQ FirstLight Power Resources 200 Glastonbury Boulevard Suite 303 Glastonbury, Connecticut 06033</p>	<p>ALBERT E FISH, Jr FISH, ALBERT E., JR. 40 Ben Hale Rd Gill, Massachusetts 01376-9741</p>
<p>Linda Dunlavy Executive Director Franklin Regional Council of Governments 425 Main Street Greenfield, Massachusetts 01301</p>	<p>Brandon Taylor 22 Union St. Concord, Massachusetts 01742</p>
<p>Matthew Thomas Narragansett Indian Tribe 4375 B South County Trail Charlestown, Rhode Island 02813</p>	<p>Doug Harris Narragansett Indian Tribe 4375 B South County Trail Charlestown, Rhode Island 02813</p>
<p>Roger A Hunt Director Quinebaug Associates, LLC 370 Main St, Ste 800 Worcester, Massachusetts 01608-1741</p>	<p>Kathryn Kennedy Applied River Scientist The Nature Conservancy 25 Main Street, Suite 220 Northampton, Massachusetts 01060</p>
<p>Joseph P Graveline President The Nolumbeka Projec 88 Columbus Avenue Greenfield, Massachusetts 01301</p>	<p>Leon F Szeptycki Environmental Counsel Trout Unlimited 1300 17th St N Ste 500 Arlington, Virginia 22209-3800</p>
<p>U.S. ACE Commander North Atlantic Division 26 Federal Plz, # 2109 New York, New York 10278-0090</p>	<p>Christopher S Murphy Senator U.S. Senate SD-B40A Dirksen Senate Office Bldg Washington, District of Columbia 20515</p>

APPENDIX A
STUDY PLAN CRITERIA
18 CFR Section 5.9(b)

Any information or study request must contain the following:

1. Describe the goals and objectives of each study proposal and the information to be obtained;
2. If applicable, explain the relevant resource management goals of the agencies or Indian tribes with jurisdiction over the resource to be studied;
3. If the requester is not a resource agency, explain any relevant public interest considerations in regard to the proposed study;
4. Describe existing information concerning the subject of the study proposal, and the need for additional information;
5. Explain any nexus between project operations and effects (direct, indirect, and/or cumulative) on the resource to be studied, and how the study results would inform the development of license requirements;
6. Explain how any proposed study methodology (including any preferred data collection and analysis techniques, or objectively quantified information, and a schedule including appropriate filed season(s) and the duration) is consistent with generally accepted practice in the scientific community or, as appropriate, considers relevant tribal values and knowledge; and
7. Describe considerations of level of effort and cost, as applicable, and why proposed alternative studies would not be sufficient to meet the stated information needs.

APPENDIX B

PROCESS PLAN AND SCHEDULE FOR THE ILP RELICENSING OF WILDER, BELLOWS FALLS, VERNON, NORTHFIELD MOUNTAIN AND TURNERS FALLS PROJECTS

(shaded milestones are unnecessary if there are no study disputes; if due date falls on a weekend or holiday, the due date is the following business day)

18 C.F.R.	Lead	Activity	Timeframe	Deadline
§ 5.5(a)	TransCanada/ FirstLight	Filing of NOI		10/31/2012
§ 5.6(a)	TransCanada/ FirstLight	Filing of PAD		10/31/2012
§ 5.7	FERC	Initial Tribal Consultation Meeting	Within 30 Days of filing NOI and PAD	Pending
§5.8	FERC	FERC Issues Notice of Commencement of Proceeding and Scoping Document (SD1) and requests to Initiate Informal Consultation under Section 7 of the ESA Consultation and section 106 of the NHPA	Within 60 days of filing NOI and PAD	12/21/2012
§5.8 (b)(3) (viii)	FERC/ Stakeholders	Public Scoping Meetings	Within 30 days of NOI and PAD notice and issuance of SD1	1/28 to - 1/31/2013
§ 5.9	FERC/ Stakeholders	File Comments on PAD, SD1, and Study Requests	Within 60 days of NOI and PAD notice and issuance of SD1	3/1/2013
§5.10	FERC	FERC Issues Scoping Document 2 (SD2) (if necessary)	Within 45 days of deadline for filing comments on SD1	4/15/2013
§5.11(a)	TransCanada/ FirstLight	File Proposed Study Plans	Within 45 days of deadline for filing comments on SD1	4/15/2013
§5.11(e)	TransCanada/ FirstLight/ Stakeholders	Study Plan Meetings	Within 30 days of deadline for filing proposed Study Plans	5/15/2013
§5.12	Stakeholders	File Comments on Proposed Study Plan	Within 90 days after proposed study plan is filed	7/14/2013
§5.13(a)	TransCanada/ FirstLight	File Revised Study Plan	Within 30 days following the deadline for filing comments on proposed Study Plan	8/13/2013

18 C.F.R.	Lead	Activity	Timeframe	Deadline
§5.13(b)	Stakeholders	File Comments on Revised Study Plan (if necessary)	Within 15 days following Revised Study Plan	8/28/2013
§5.13(c)	FERC	FERC Issues Study Plan Determination	Within 30 days following Revised Study Plan	9/12/2013
§5.14(a)	Mandatory Conditioning Agencies	Notice of Formal Study Dispute (if necessary)	Within 20 days of Study Plan determination	10/2/2013
§5.14(l)	FERC	Study Dispute Determination	Within 70 days of notice of formal study dispute	12/11/2013
§5.15(a)	TransCanada/ FirstLight	Conduct First Season Field Studies	Spring/summer 2014	
§5.15 (b)	TransCanada/ FirstLight	File Study Progress Reports	Spring/summer 2014	
§5.15(c)(1)	TransCanada/ FirstLight	File Initial Study Reports	No later than one year from Study Plan approval	9/12/2014
§5.15(c)(2)	TransCanada/ FirstLight	Initial Study Results Meeting	Within 15 days of Initial Study Report	9/27/2014
§5.15(c)(3)	TransCanada/ FirstLight	File Study Results Meeting Summary	Within 15 days of Study Results Meeting	10/12/2014
§5.15(c)(4)	Stakeholders/ FERC	File Meeting Summary – Disagreements/Modifications to Study/Propose New Studies	Within 30 days of filing Meeting Summary	11/11/2014
§5.15(c)(5)	TransCanada/ FirstLight	File Responses to Disagreements	Within 30 days of disputes	12/11/2014
§5.15(c)(6)	FERC	Resolution of Disagreements (if necessary)	Within 30 days of filing responses to disputes	1/10/2015
§5.15	TransCanada/ FirstLight	Conduct Second Season Field Studies	Spring/summer 2015	
§5.15 (f)	TransCanada/ FirstLight	File Updated Study Reports	No later than two years from Study Plan approval	9/12/2015
§5.15(c)(2)	TransCanada/ FirstLight	Second Study Results Meeting	Within 15 days of Updated Study Report	9/27/2015
§5.15(c)(3)	TransCanada/ FirstLight	File Study Results Meeting Summary	With 15 days of Study Results Meeting	10/12/2015
§5.15(c)(4)	Stakeholders / FERC	File Meeting Summary Disagreements/ Modifications to Study Requests, Requests for New Studies	Within 30 days of filing Meeting Summary	11/11/2015
§5.15(c)(5)	TransCanada/First Light/ Stakeholders	File Responses to Disagreements (if necessary)	Within 30 days of disputes	12/11/2015
§5.15(c)(6)	FERC	Resolution of Disagreements (if necessary)	Within 30 days of filing responses to disagreements	1/10/2016

18 C.F.R.	Lead	Activity	Timeframe	Deadline
§5.16(a)	TransCanada/ FirstLight	File Preliminary Licensing Proposal (or Draft License Application) with the FERC and distribute to Stakeholders	Not later than 150 days before final application is filed	12/4/2015
§5.16 (e)	FERC / Stakeholders	Comments on TransCanada Preliminary Licensing Proposal, Additional Information Request (if necessary)	Within 90 days of filing Preliminary Licensing Proposal (or Draft License Application)	3/3/2016
§5.17 (a)	TransCanada/ FirstLight	License Applications Filed		4/30/2016

APPENDIX C

ENTITIES THAT FILED WRITTEN SCOPING COMMENTS

In addition to the comments received at the scoping meetings, the following entities filed comments on the PAD or SD1:

<u>Entity</u>	<u>Projects</u>	<u>Date</u>
New Hampshire Division of Historical Resources	Bellows Falls, Vernon, Wilder	November 9, 2012
The Commonwealth of Massachusetts	Turners Falls, Northfield Mountain	January 16, 2013
Ross McIntyre	Wilder	January 23, 2013
Pine Park Association	Wilder	January 28, 2013
Greater Northfield Watershed Association	Northfield Mountain	January 31, 2013
River Residents Association	Turners Falls, Northfield Mountain	January 31, 2013
Thomas Shearer	none specified	January 31, 2013
Peter DesMeules	Bellows Falls, Vernon, Wilder, Northfield Mountain, Turners Falls	February 1, 2013
Peter Wright	Bellows Falls	February 1, 2013
Upper Valley Trails Alliance	Wilder	February 1, 2013
Landowners and Concerned Citizens for License Compliance	Turners Falls	February 4, 2013
Landowners and Concerned Citizens	Turners Falls, Northfield Mountain	February 11, 2013
Massachusetts Division of Fisheries & Wildlife	Turners Falls, Northfield Mountain	February 11, 2013

Connecticut River Joint Commission	Bellows Falls, Vernon, Wilder, Northfield Mountain, Turners Falls	February 12, 2013
Mary Jo Maffei	Northfield Mountain	February 16, 2013
The River Residents Association		
<ul style="list-style-type: none"> • Peter Conway 	Turners Falls, Northfield Mountain	February 16, 2013
<ul style="list-style-type: none"> • Stanley & Geri Johnson 	Turners Falls, Northfield Mountain	February 16, 2013
Ecosystem Management Consultants	Wilder	February 19, 2013
Four State Farm	Northfield Mountain	February 20, 2013
Nicole Cormen	Wilder	February 20, 2013
Town of Montague	Turners Falls	February 21, 2013
FirstLight	Bellows Falls, Vernon, Wilder, Northfield Mountain, Turners Falls	February 22, 2013
Town of Northfield, Massachusetts	Vernon, Northfield Mountain, Turners Falls	February 22, 2013
Ashuelot River Local Advisory Committee	Bellows Falls, Turners Falls, Northfield Mountain	February 24, 2013
City of Lebanon Planning Office	Wilder	February 25, 2013
City of Lebanon	none specified	February 25, 2013
Karly Meyer	Turners Falls, Northfield Mountain	February 25, 2013
William & Jennifer Lipfert	Wilder	February 25, 2013
Massachusetts Farm Bureau Federation	Northfield Mountain	February 25, 2013

The River Residents Association		
• Cynthia Dale	Turners Falls, Northfield Mountain	February 25, 2013
• Betsy & Jean Egan	Turners Falls, Northfield Mountain	February 25, 2013
• Michael & Diane Kane	Turners Falls, Northfield Mountain	February 25, 2013
• Leena Newcomb	Turners Falls, Northfield Mountain	February 25, 2013
• Walter Patenaude	Turners Falls, Northfield Mountain	February 25, 2013
• Robert Stafford	Turners Falls, Northfield Mountain	February 25, 2013
• Vivien Venskowski	Turners Falls, Northfield Mountain	February 25, 2013
City of Lebanon	none specified	February 25, 2013
Charlestown Conservation Commission	Bellows Falls	February 26, 2013
City of Lebanon Planning Office	Wilder	February 26, 2013
Town and City of Lebanon	Wilder	February 26, 2013
New Hampshire Natural Heritage Bureau	Bellows Falls, Vernon, Wilder Dam	February 27, 2013
New Hampshire Fish and Game Department	Turners Falls, Northfield Mountain	February 27, 2013
New Hampshire Fish and Game Department	Bellows Falls, Vernon, Wilder Dam	February 27, 2013
National Oceanic and Atmospheric Administration	Turners Falls, Northfield Mountain	February 27, 2013
Town of Hartford Parks and Recreation	Wilder	February 27, 2013
Town of Hartford, Vermont	Wilder	February 27, 2013

Trustee of Pine Park Association	Wilder	February 27, 2013
Appalachian Mountain Club	Bellows Falls	February 28, 2013
Appalachian Mountain Club	Bellows Falls, Vernon, Wilder, Northfield Mountain, Turners Falls	February 28, 2013
Appalachian Mountain Club, Vermont River Conservancy, and Friends of the Connecticut River Paddlers' Trail	Bellows Falls	February 28, 2013
Appalachian Mountain Club, Vermont River Conservancy, and Friends of the Connecticut River Paddlers' Trail	Turners Falls, Northfield Mountain	February 28, 2013
Appalachian Mountain Club	Wilder	February 28, 2013
Chris Curtis	Turners Falls	February 28, 2013
Franklin Conservation District	Turners Falls, Northfield Mountain	February 28, 2013
Hanover Conservancy	Wilder	February 28, 2013
Massachusetts Division of Fisheries & Wildlife	Turners Falls, Northfield Mountain	February 28, 2013
New England Flow, American Whitewater, Appalachian Mountain Club	Bellows Falls	February 28, 2013
New England Flow, American Whitewater, Appalachian Mountain Club	Turners Falls, Northfield Mountain	February 28, 2013
New England Flow, American Whitewater, Appalachian Mountain Club	Vernon	February 28, 2013
New England Flow, American Whitewater, Appalachian Mountain Club	Wilder	February 28, 2013
New England Flow, American Whitewater	Bellows Falls	February 28, 2013
New England Flow, American Whitewater	Wilder	February 28, 2013

University of Massachusetts Amherst	Bellows Falls, Vernon, Wilder, Northfield Mountain, Turners Falls	February 28, 2013
National Park Service	Turners Falls, Northfield Mountain	February 28, 2013
National Park Service	Bellows Falls, Vernon, Wilder	February 28, 2013
The Nolumbeka Project	Wilder	February 28, 2013
The River Residents Association	Bellows Falls	February 28, 2013
TransCanada	Turners Falls, Northfield Mountain	February 28, 2013
Upper Valley Land Trust	Bellows Falls	February 28, 2013
Upper Valley Land Trust	Bellows Falls, Wilder	February 28, 2013
Upper Valley Trails Alliance	Wilder	February 28, 2013
Audubon Society of New Hampshire	Bellows Falls, Vernon, Wilder	March 1, 2013
Connecticut River Joint Commissions	Bellows Falls, Vernon, Wilder, Northfield Mountain, Turners Falls	March 1, 2013
Connecticut River Watershed Council	Turners Falls, Northfield Mountain	March 1, 2013
FirstLight	Vernon	March 1, 2013
Franklin Regional Council of Governments	Turners Falls, Northfield Mountain	March 1, 2013
Howard Fairman	Northfield Mountain	March 1, 2013
Joanne McGee	Northfield Mountain	March 1, 2013

Kurt Heidinger	Turners Falls	March 1, 2013
Landowners and Concerned Citizens for License Compliance	Turners Falls, Northfield Mountain	March 1, 2013
Massachusetts Department of Environmental Protection	Turners Falls, Northfield Mountain	March 1, 2013
New England Mountain Biking Association	Northfield Mountain	March 1, 2013
New England Farmers Union	Bellows Falls, Vernon, Wilder, Northfield Mountain, Turners Falls	March 1, 2013
New Hampshire Division of Historical Resources	Bellows Falls, Vernon, Wilder, Northfield Mountain, Turners Falls	March 1, 2013
New Hampshire Department of Environmental Services	Bellows Falls, Vernon, Wilder, Northfield Mountain, Turners Falls	March 1, 2013
Richard Holmes	none specified	March 1, 2013
Rockingham Conservation Commission	Bellows Falls	March 1, 2013
Stephanie Krug	Northfield Mountain	March 1, 2013
The Nature Conservancy	Bellows Falls, Vernon, Wilder, Northfield Mountain, Turners Falls	March 1, 2013
Town of Gill	Turners Falls, Northfield Mountain	March 1, 2013
Deerfield River Chapter of Trout Unlimited	Bellows Fall, Vernon	March 1, 2013
Deerfield River Chapter of Trout Unlimited	Turners Falls, Northfield Mountain	March 1, 2013
Two Rivers-Ottawaquechee Regional Commission	Wilder	March 1, 2013
United States Fish and Wildlife Service	Bellows Falls, Vernon, Wilder	March 1, 2013

United States Fish and Wildlife Service	Turners Falls, Northfield Mountain	March 1, 2013
Vermont Division for Historic Preservation	Bellows Falls, Vernon, Wilder	March 1, 2013
Vermont Department of Environmental Conservation	Bellows Falls, Vernon, Wilder, Northfield Mountain, Turners Falls	March 1, 2013

Document Content(s)

P-1892-026Letter3.DOC.....1-114