

ORIGINAL

MEMO

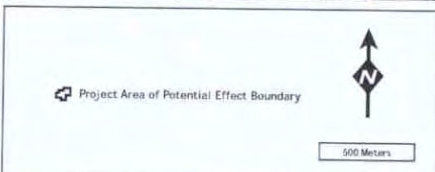
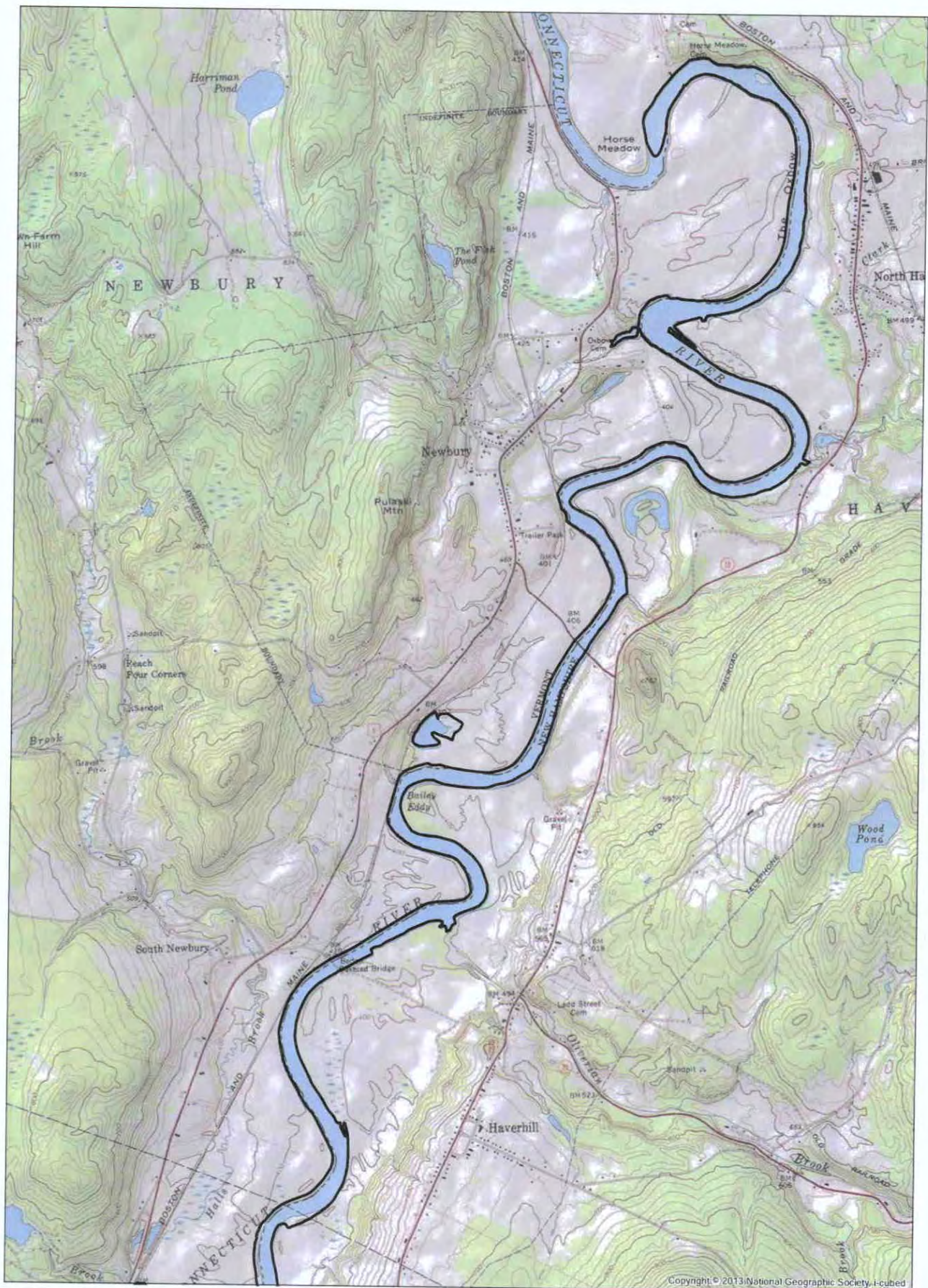
To: Dockets
From: Christiane D. Casey-OEP-x8577
Date: December 4, 2013

Subject: Maps in E-Library

Please put these maps in the file for the following Projects:

P-1892-026, P-1855-045, and P-1904-073

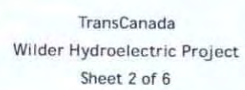
FILED
SECRETARY OF THE
COMMISSION
2013 DEC -4 P 12:43
FEDERAL ENERGY
REGULATORY COMMISSION

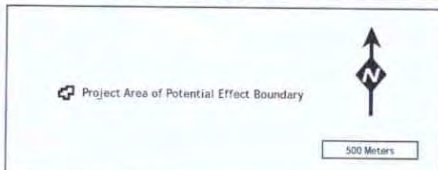
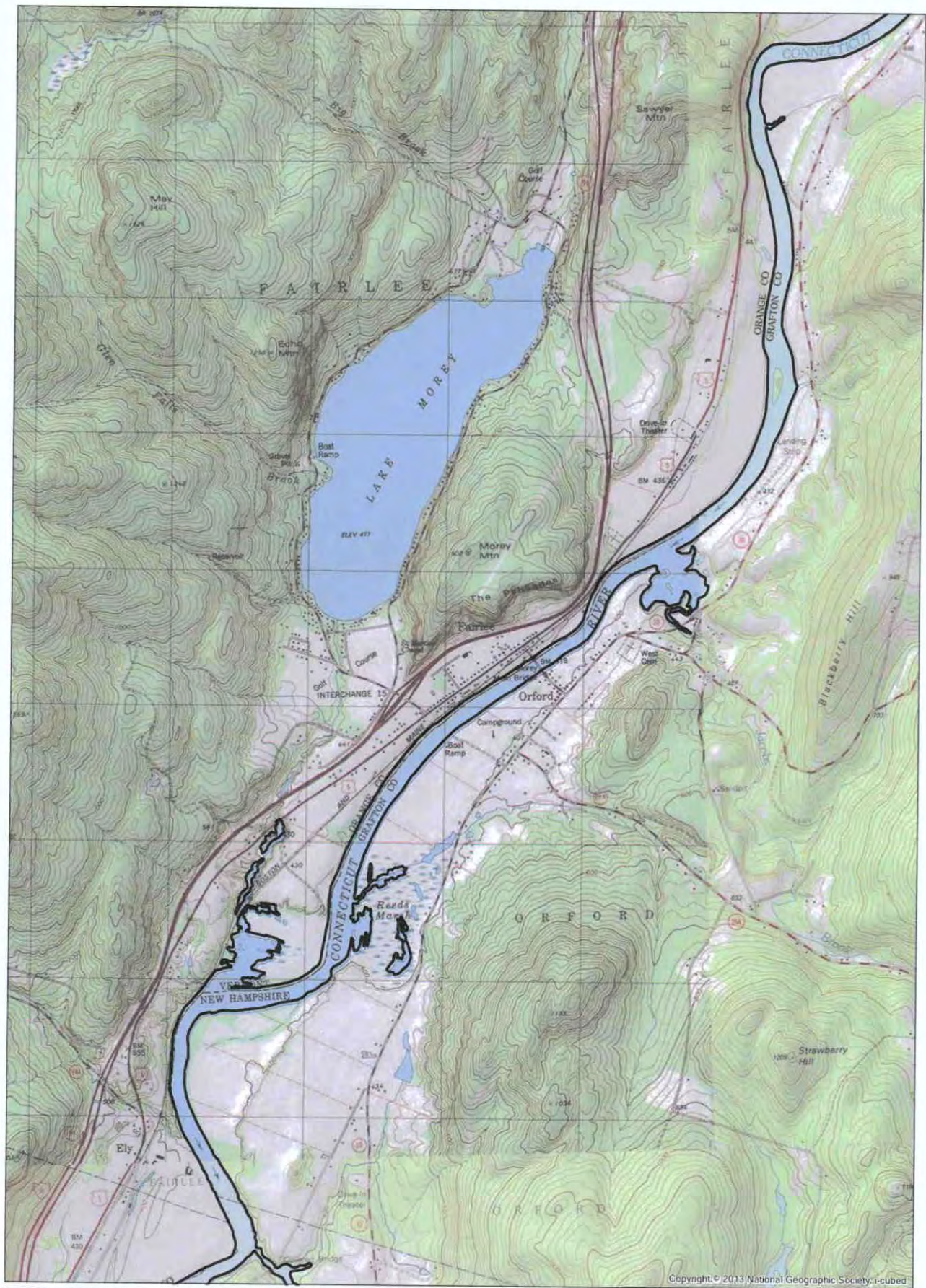


TransCanada
Wilder Hydroelectric Project
Sheet 1 of 6

July 18, 2012

Figure 6. Project Area of Potential Effect for archaeological resources, Wilder Hydroelectric Project.

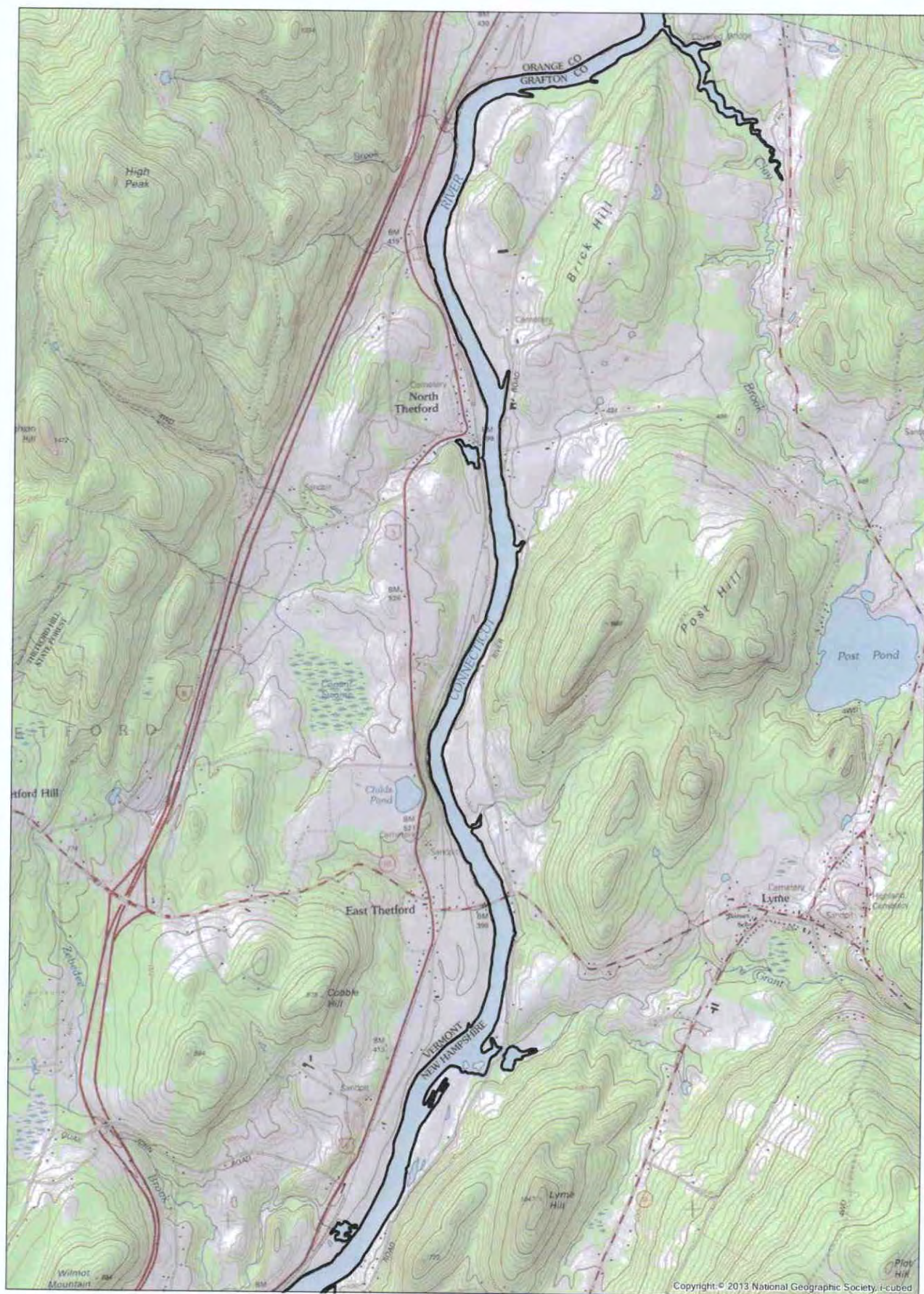




TransCanada
Wilder Hydroelectric Project
Sheet 3 of 6

July 18, 2012

Figure 8. Project Area of Potential Effect for archaeological resources, Wilder Hydroelectric Project.



Project Area of Potential Effect Boundary



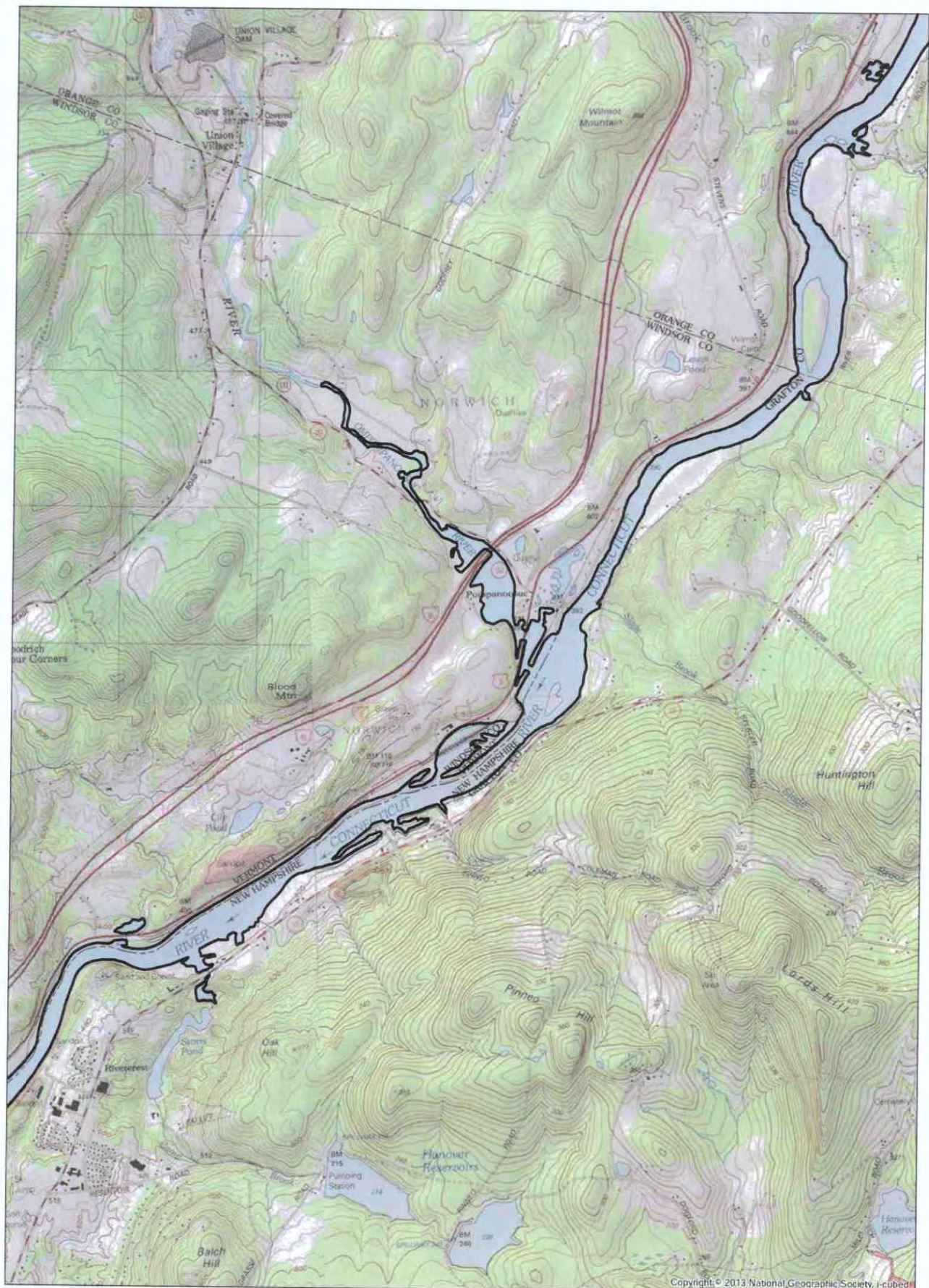
500 Meters



TransCanada
Wilder Hydroelectric Project
Sheet 4 of 6

July 18, 2012

Figure 9. Project Area of Potential Effect for archaeological resources, Wilder Hydroelectric Project.



Project Area of Potential Effect Boundary



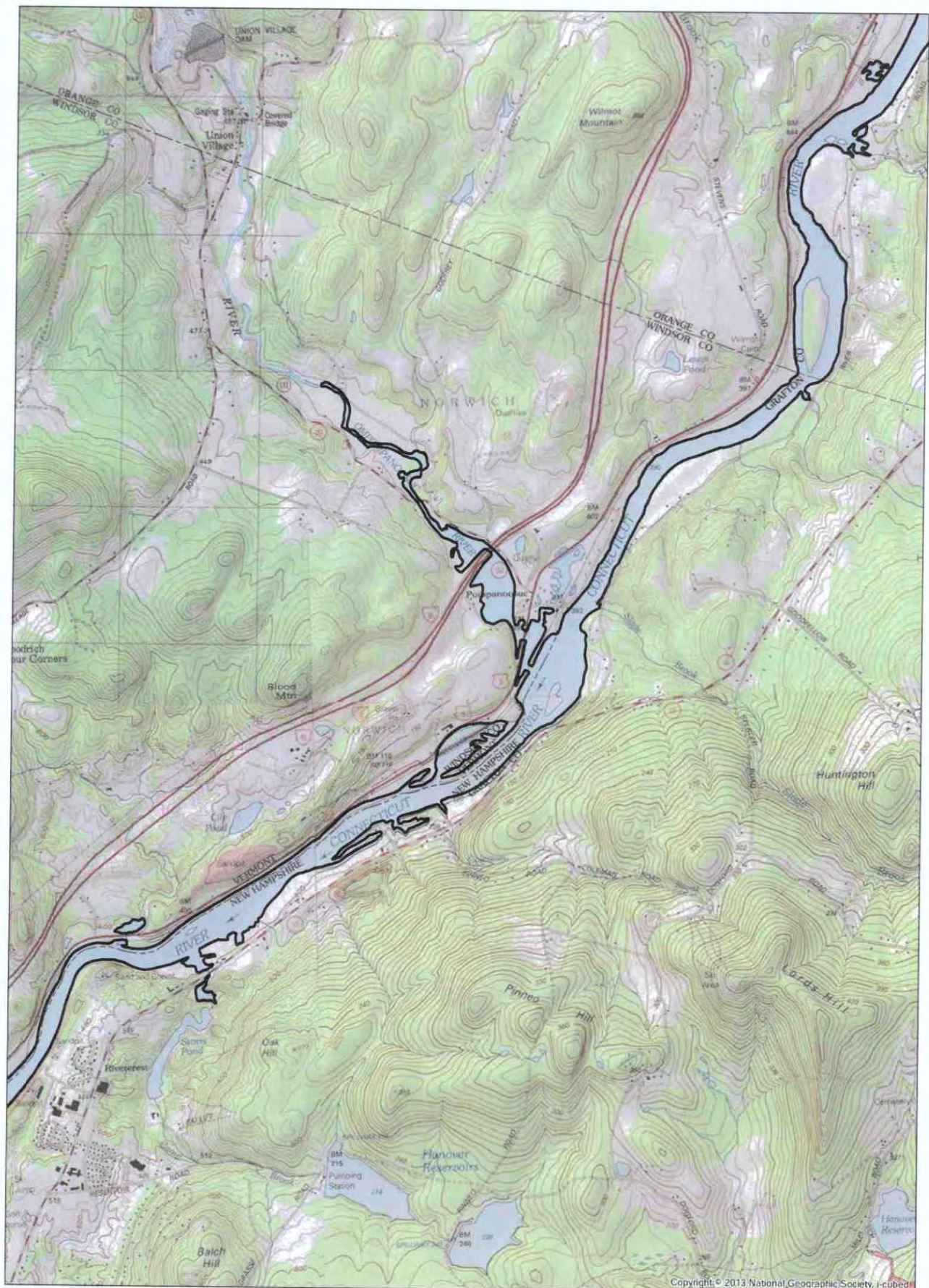
500 Meters



TransCanada
Wilder Hydroelectric Project
Sheet 5 of 6

July 18, 2012

Figure 10. Project Area of Potential Effect for archaeological resources, Wilder Hydroelectric Project.



Copyright © 2013 National Geographic Society. I-cubed



Project Area of Potential Effect Boundary



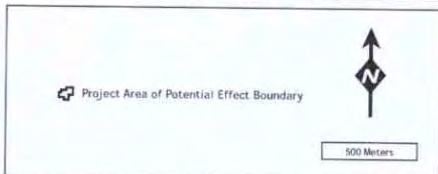
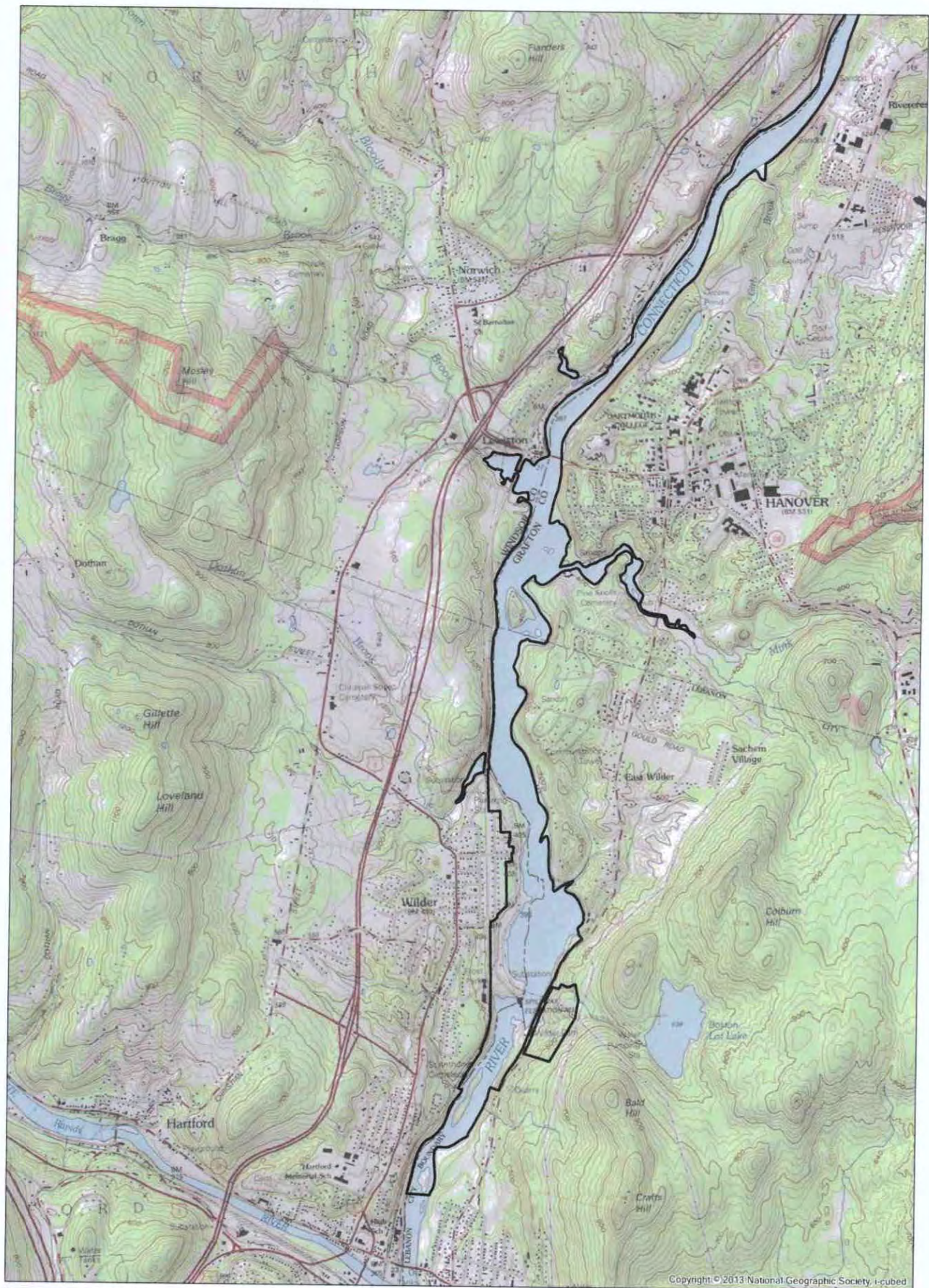
500 Meters



TransCanada
Wilder Hydroelectric Project
Sheet 5 of 6

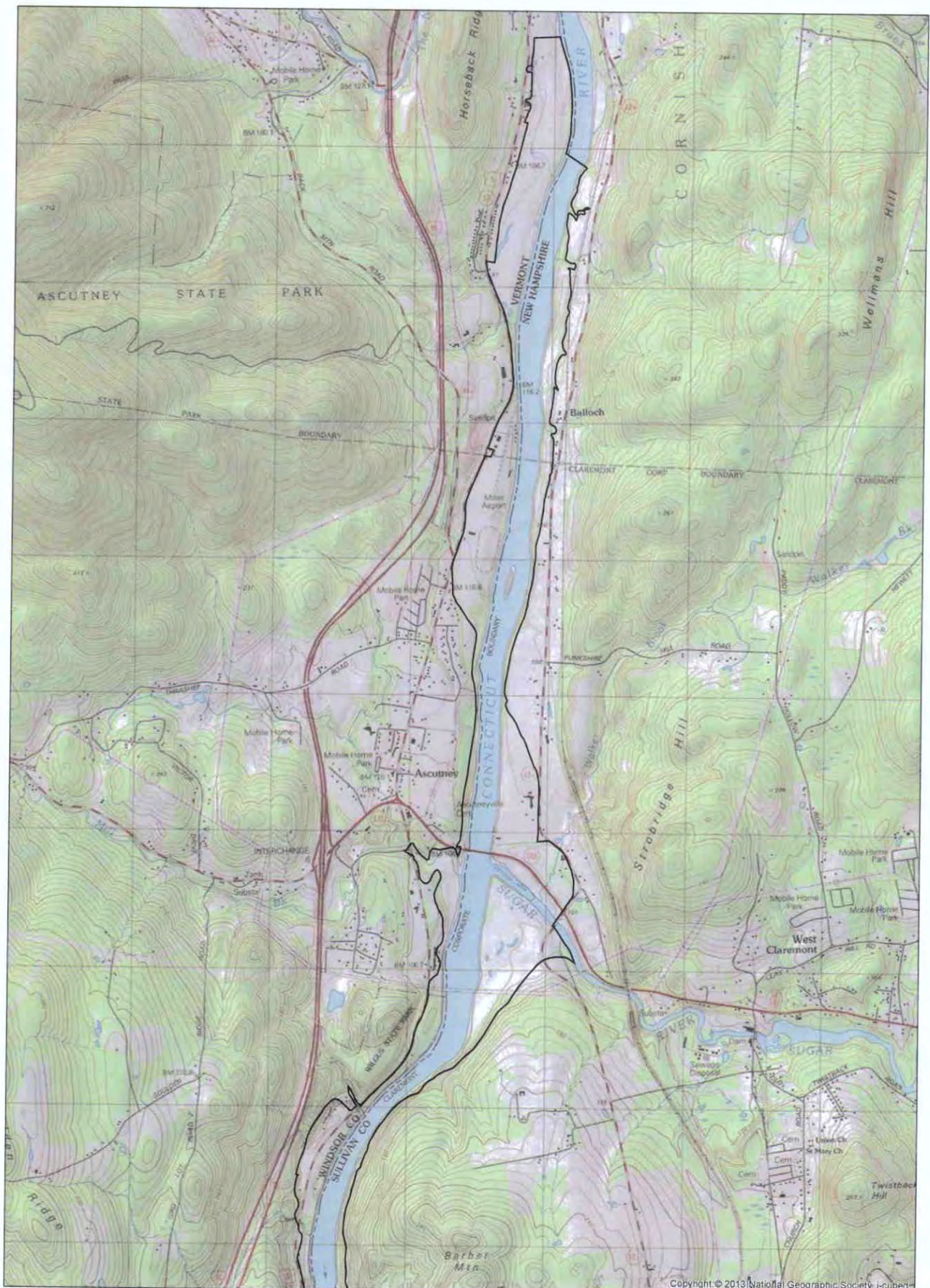
July 18, 2012

Figure 10. Project Area of Potential Effect for archaeological resources, Wilder Hydroelectric Project.



TransCanada
 Wilder Hydroelectric Project
 Sheet 6 of 6
 July 18, 2012

Figure 11. Project Area of Potential Effect for archaeological resources, Wilder Hydroelectric Project.



Copyright © 2013 National Geographic Society. I-cubed



Project Area of Potential Effect Boundary



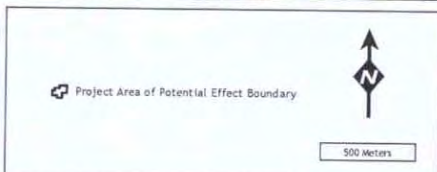
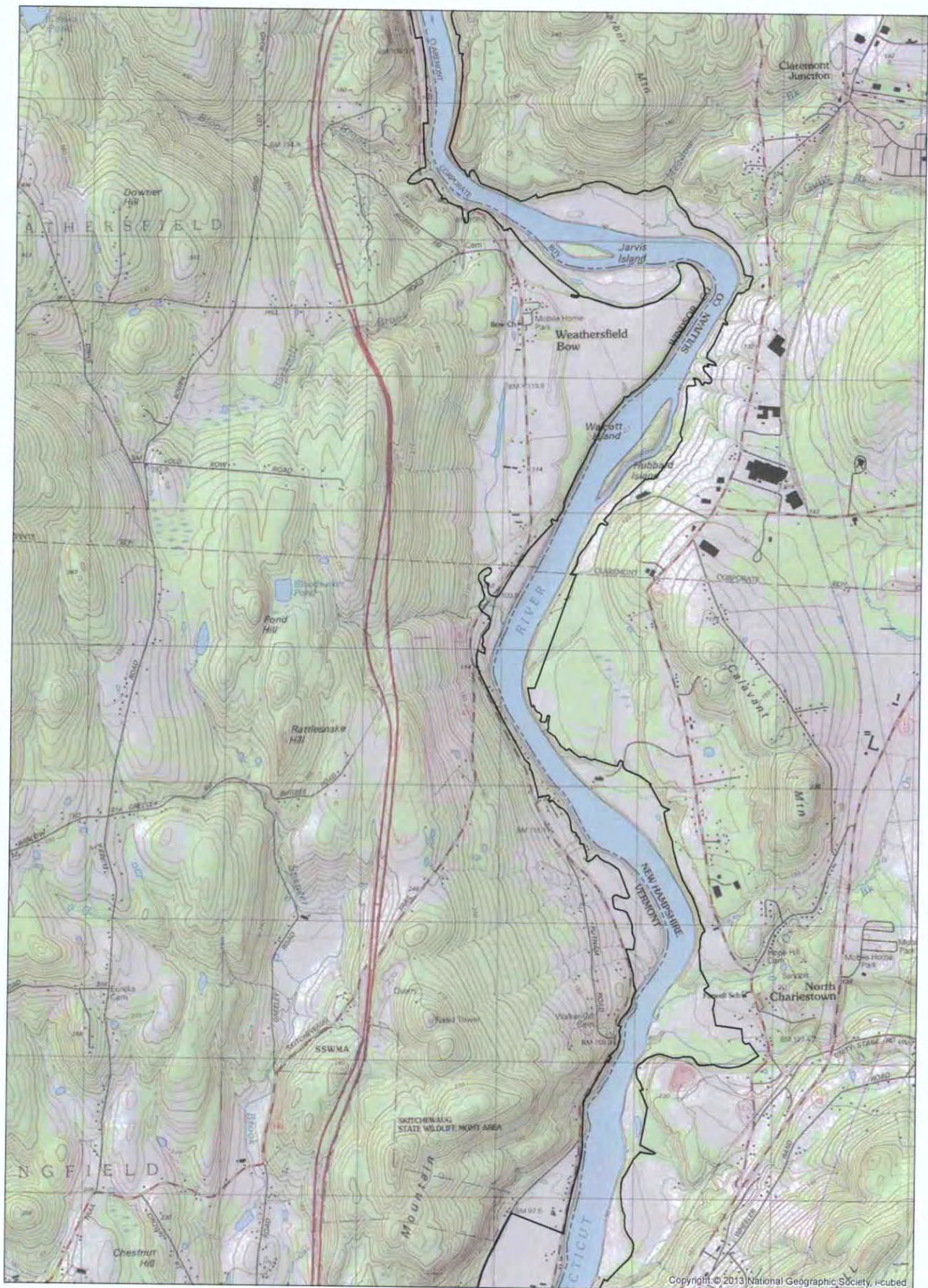
500 Meters



TransCanada
Bellows Falls Hydroelectric Project
Sheet 1 of 4

October 22, 2012

Figure 12. Project Area of Potential Effect for archaeological resources, Bellows Falls Hydroelectric Project.



TransCanada
 Bellows Falls Hydroelectric Project
 Sheet 2 of 4
 October 22, 2012

Figure 13. Project Area of Potential Effect for archaeological resources, Bellows Falls Hydroelectric Project.

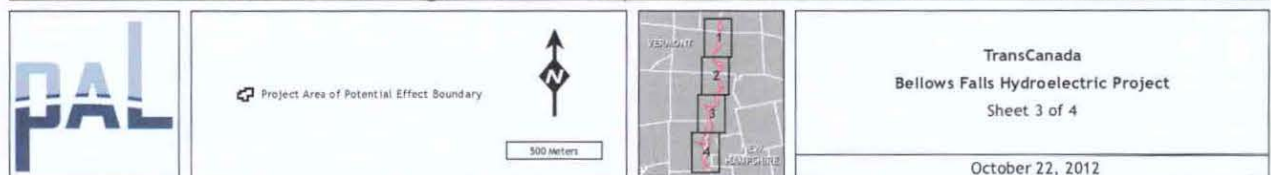
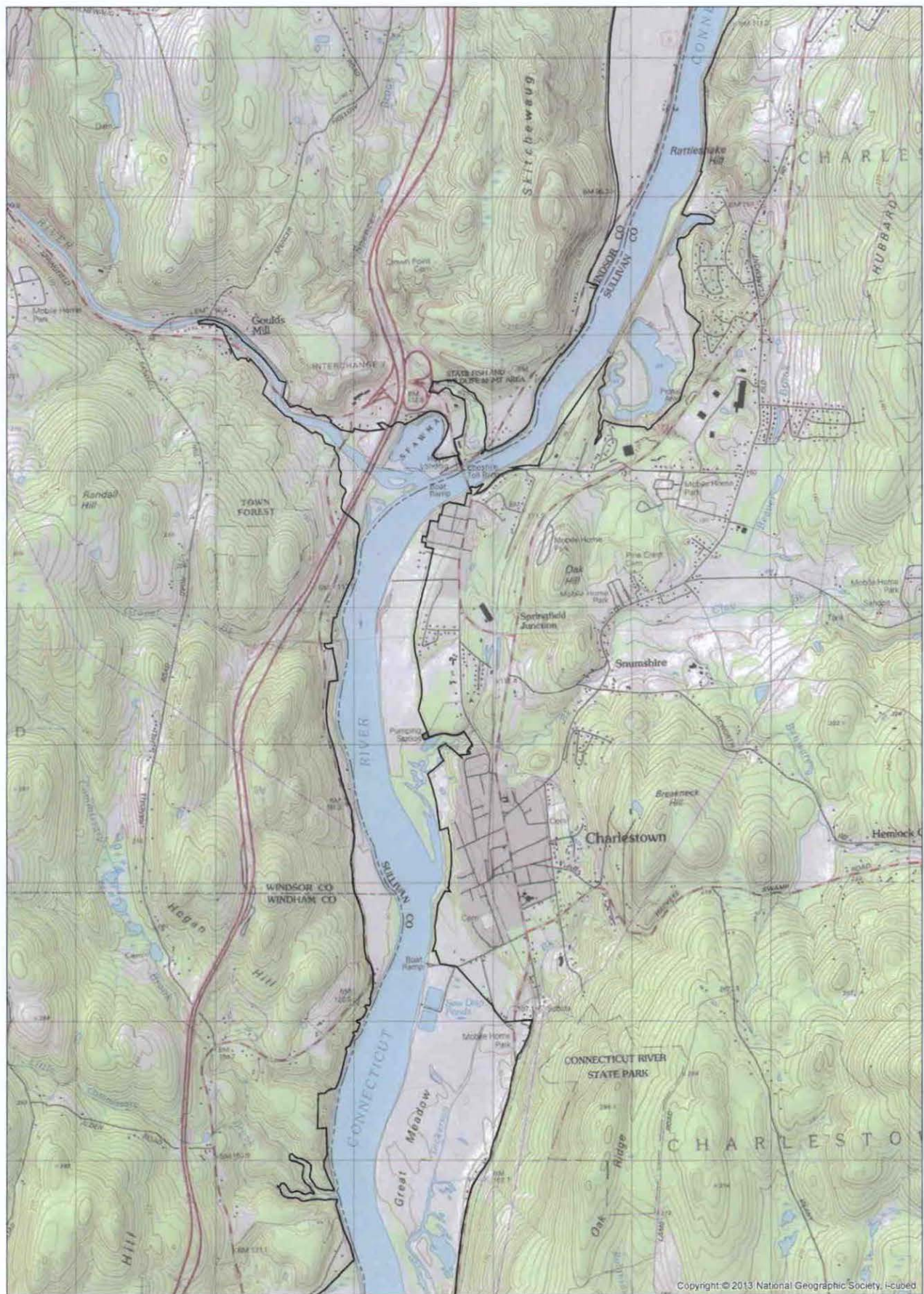
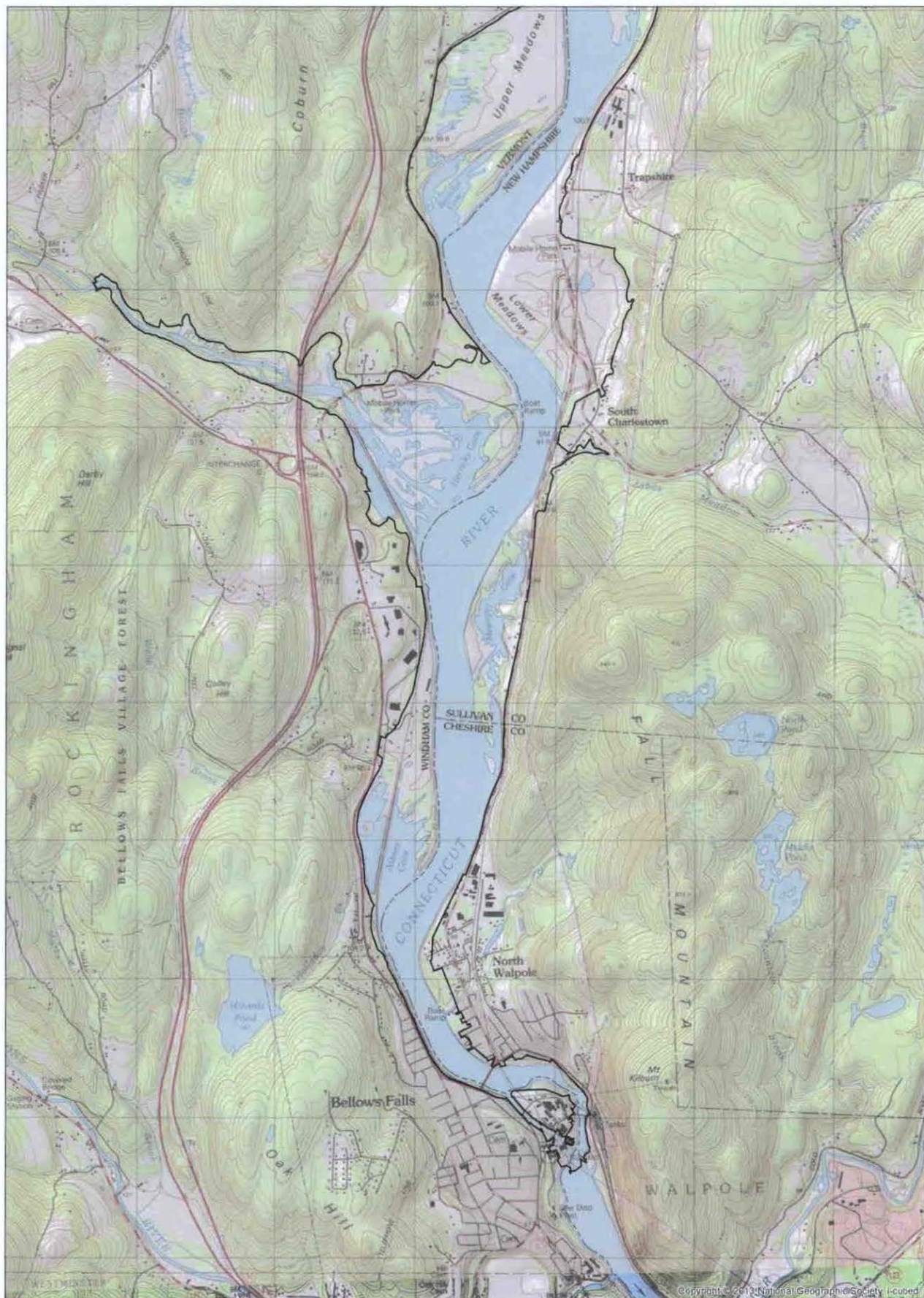


Figure 14. Project Area of Potential Effect for archaeological resources, Bellows Falls Hydroelectric Project.



Project Area of Potential Effect Boundary



500 Meters



TransCanada
Bellows Falls Hydroelectric Project
Sheet 4 of 4

October 22, 2012

Figure 15. Project Area of Potential Effect for archaeological resources, Bellows Falls Hydroelectric Project.

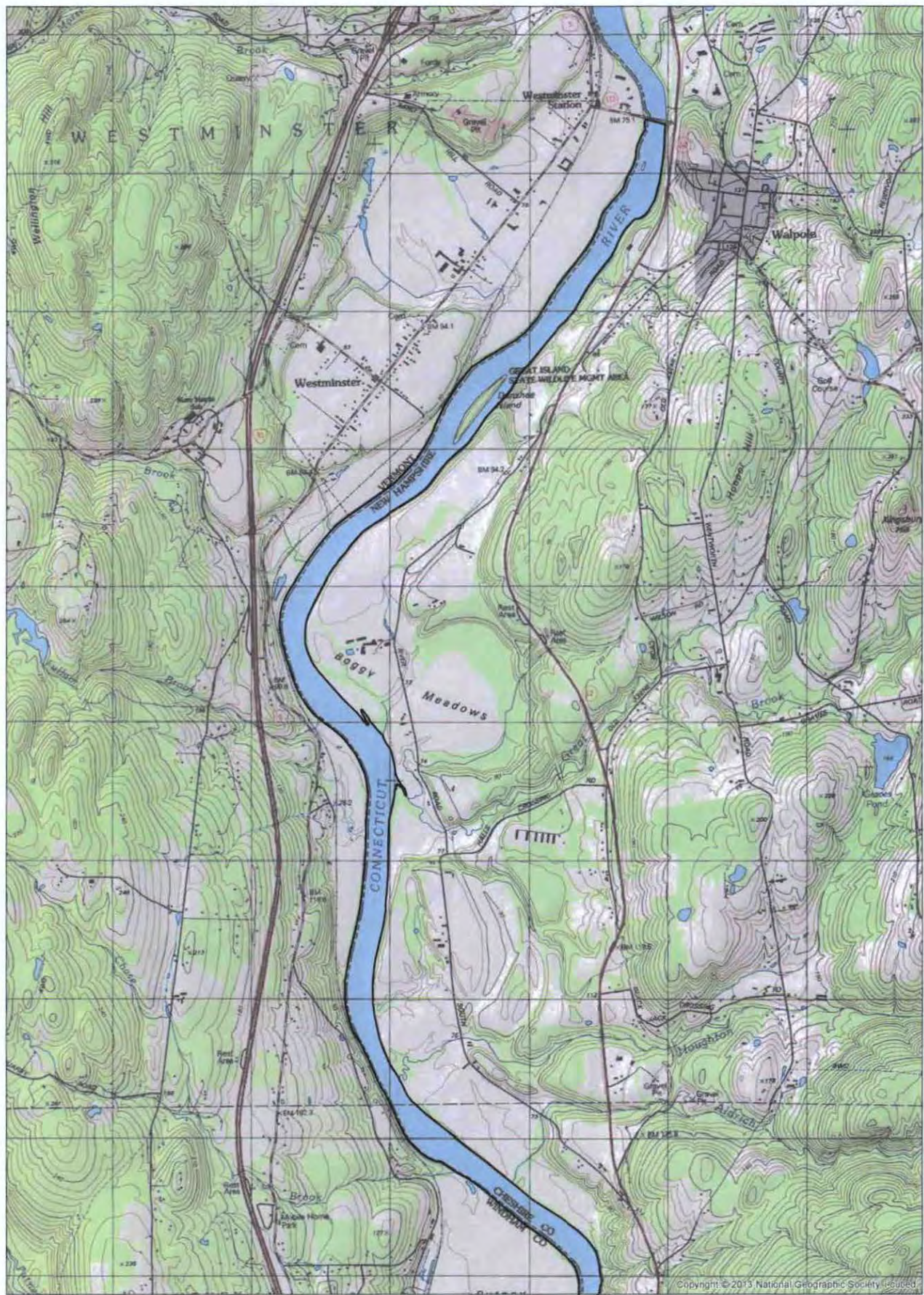
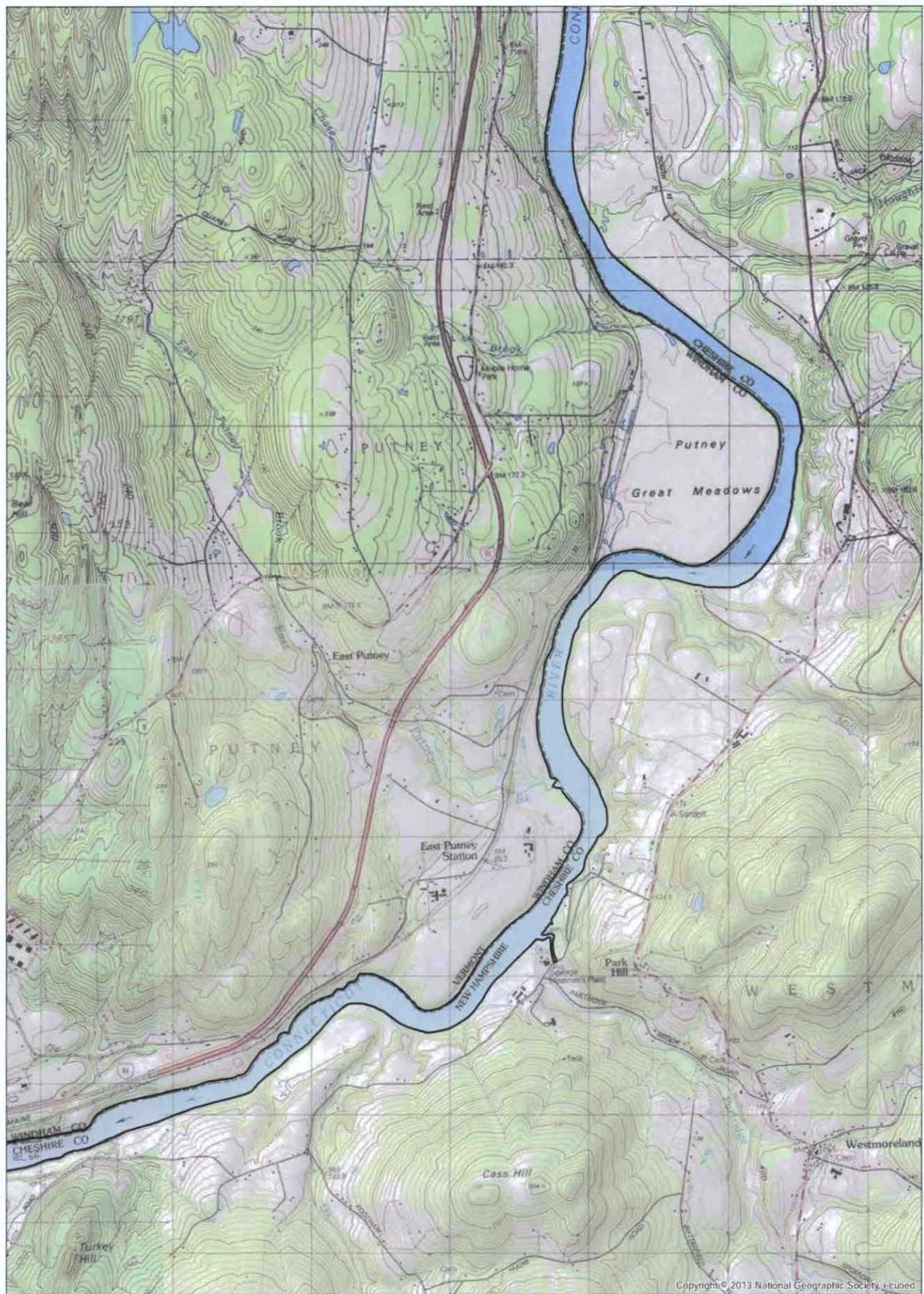


Figure 1. Project Area of Potential Effect for archaeological resources, Vernon Hydroelectric Project.



Copyright © 2013 National Geographic Society. All rights reserved.

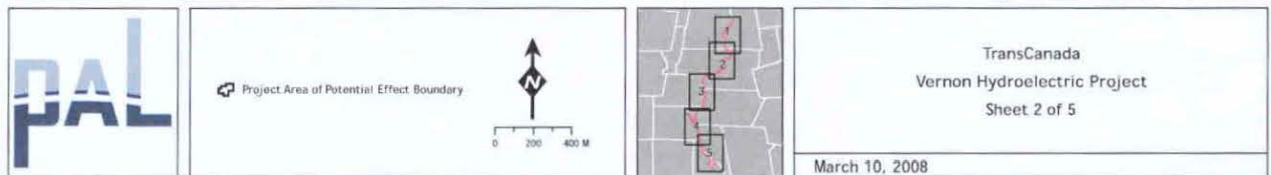


Figure 2. Project Area of Potential Effect for archaeological resources, Vernon Hydroelectric Project.

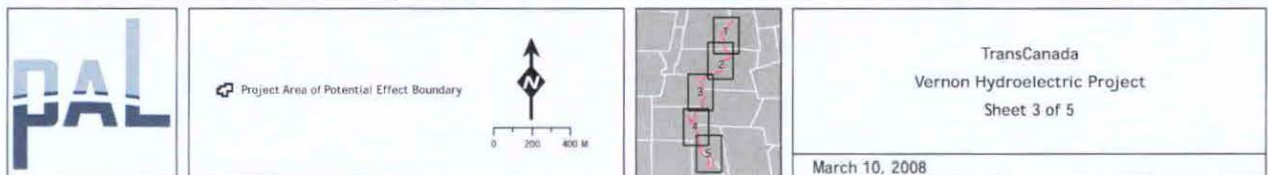
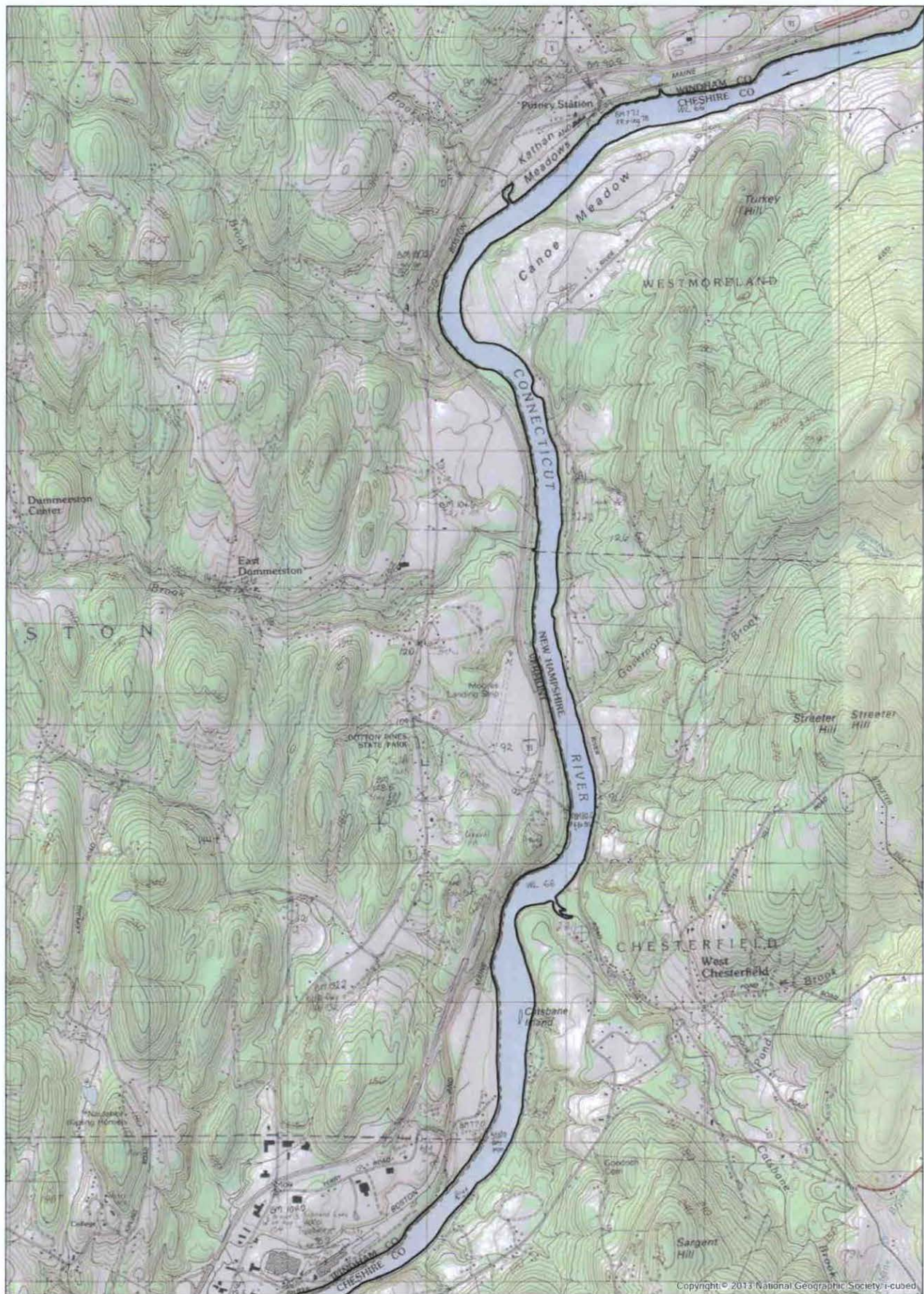
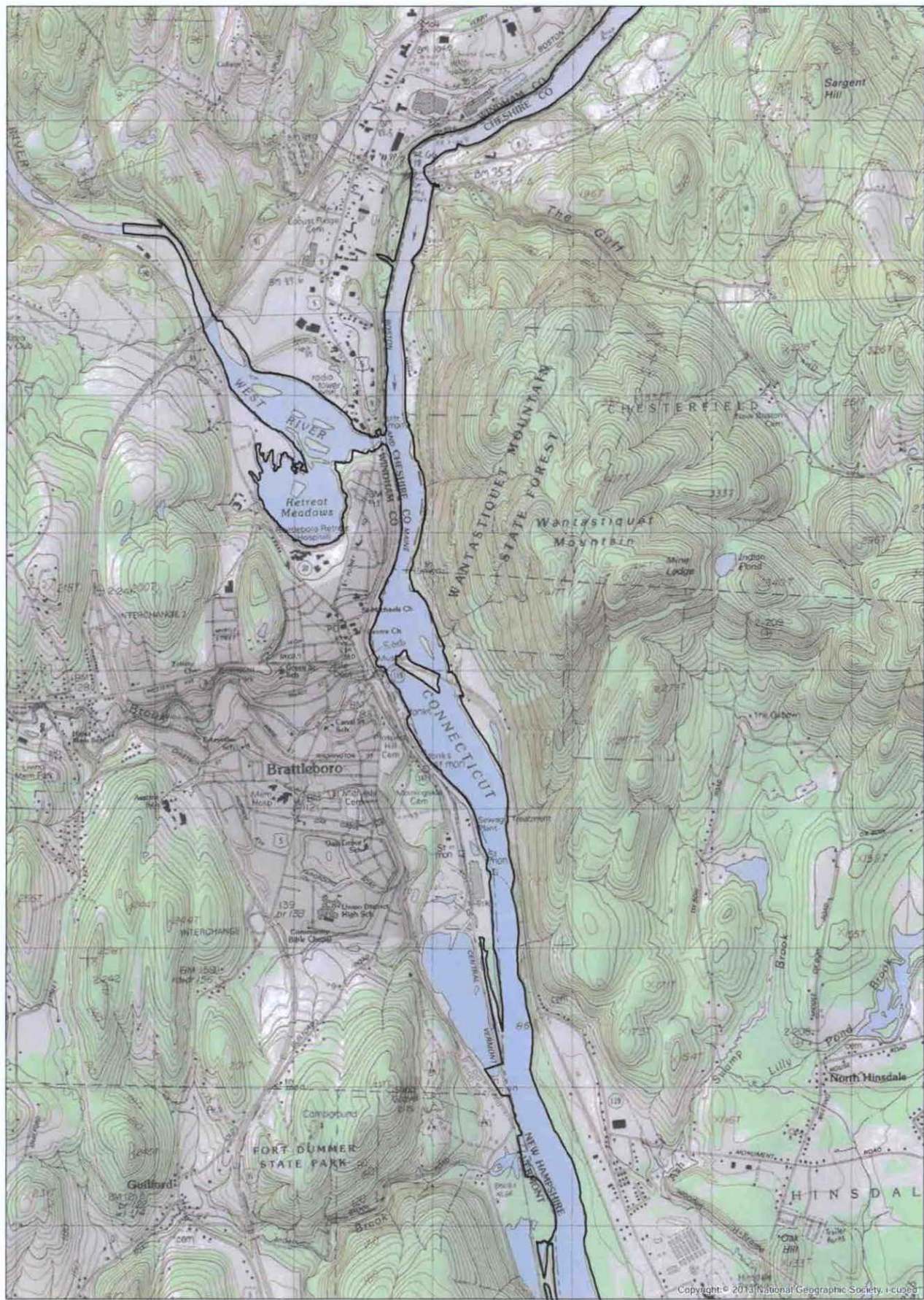
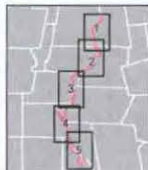
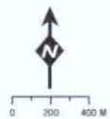


Figure 3. Project Area of Potential Effect for archaeological resources, Vernon Hydroelectric Project.



Project Area of Potential Effect Boundary



TransCanada
Vernon Hydroelectric Project
Sheet 4 of 5

March 10, 2008

Figure 4. Project Area of Potential Effect for archaeological resources, Vernon Hydroelectric Project.

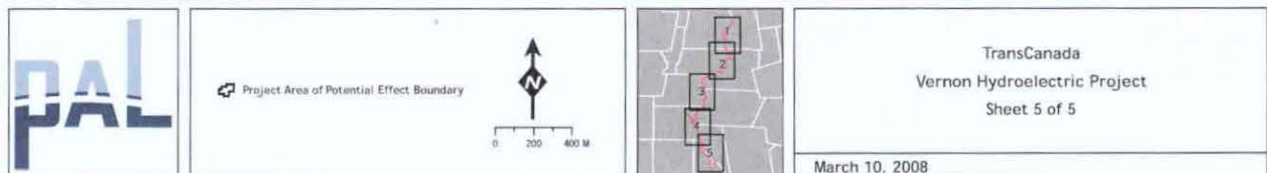
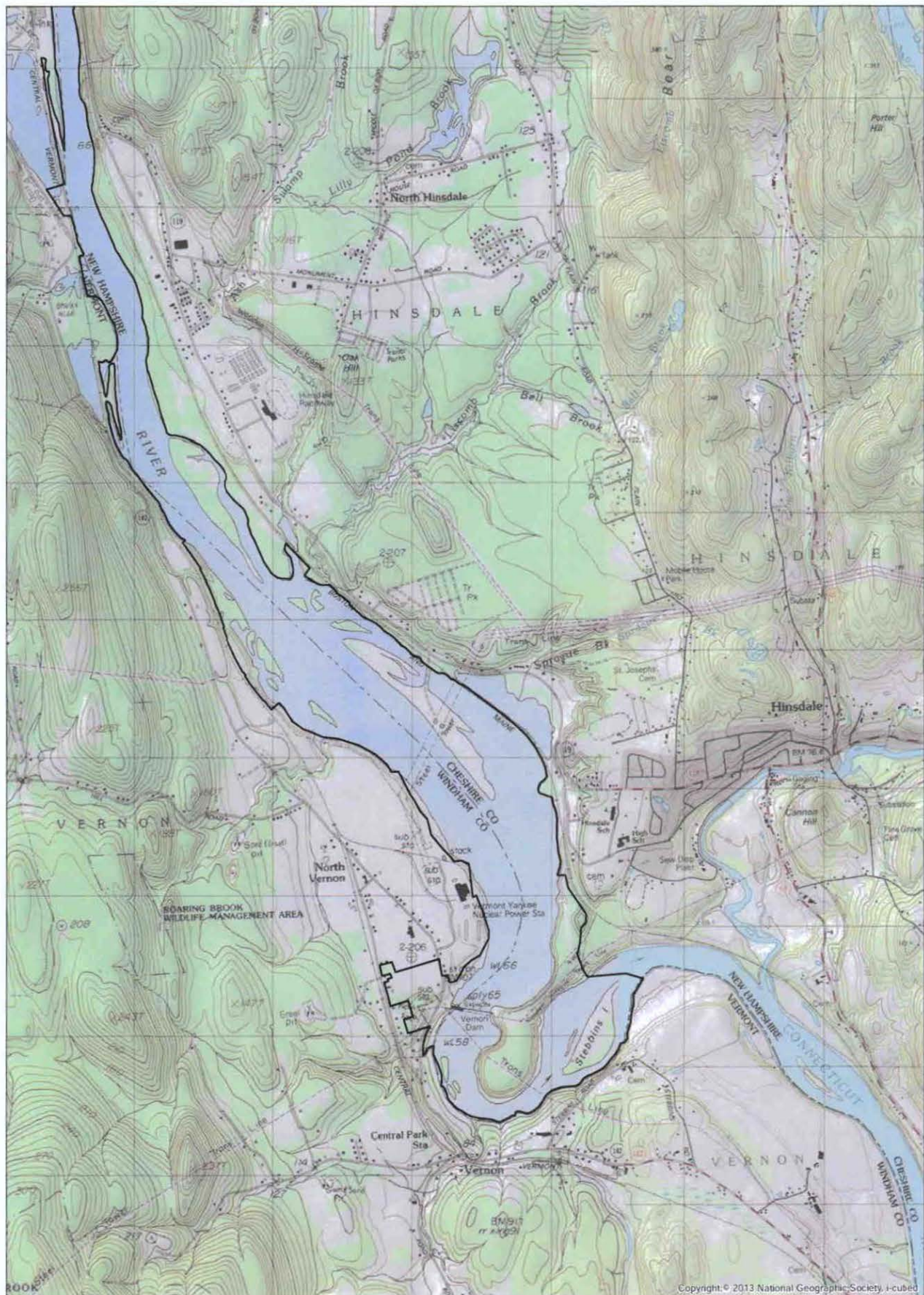


Figure 5. Project Area of Potential Effect for archaeological resources, Vernon Hydroelectric Project.